

Informacije o proizvodu (EN)

HISENSE displej 100" VA 4K Digital Signage 100DM66E

Hisense



Tehnoteka je online destinacija za upoređivanje cena i karakteristika bele tehnike, potrošačke elektronike i IT uređaja kod trgovinskih lanaca i internet prodavnica u Srbiji. Naša stranica vam omogućava da istražite najnovije informacije, detaljne karakteristike i konkurentne cene proizvoda.

Posetite nas i uživajte u ekskluzivnom iskustvu pametne kupovine klikom na link:

<https://tehnoteka.rs/p/hisense-displej-100-va-4k-digital-signage-100dm66e-akcija-cena/>

 **DEPARTURES** 12:30

Departures on 6th October 2023

SCHEDULED	FLYING TO	FLIGHT NO	AIRLINE	STATUS
Search Earlier				
14:45	HERAKLION (HER)	LS625	Jet2.Com	Departed
15:20	BELFAST CITY (BHD)	EI3689	Aer Lingus	Go to Gate 1
15:25	TENERIFE (TFS)	LS633	Jet2.Com	Wait in Lounge
15:25	PALMA (PMI)	FR9489	Ryanair	Go to Gate 3
15:25	HURGHADA (HRG)	TOM358	Tui	Wait in Lounge
15:30	DALAMAN (DLM)	LS621	Jet2.Com	Wait in Lounge
16:10	KOS (KGS)	LS659	Jet2.Com	Wait in Lounge
16:25	DALAMAN (DLM)	TOM622	Tui	Wait in Lounge
16:50	TENERIFE (TFS)	TOM7580	Tui	Departing at 17:10
16:55	THIRA (JTR)	LS663	Jet2.Com	Wait in Lounge
17:25	MALAGA (AGP)	FR4468	Ryanair	Wait in Lounge
17:25	BERGAMO (BGY)	FR1702	Ryanair	Wait in Lounge
18:10	PISA (PSA)	FR1708	Ryanair	Departing at 18:10
19:35	LIMOGES (LIG)	FR1632	Ryanair	Scheduled
20:20	DUBLIN (DUB)	FR7079	Ryanair	Scheduled
15:30	DALAMAN (DLM)	LS621	Jet2.Com	Wait in Lounge
16:10	KOS (KGS)	LS659	Jet2.Com	Wait in Lounge
16:25	DALAMAN (DLM)	TOM622	Tui	Wait in Lounge
16:50	TENERIFE (TFS)	TOM7580	Tui	Departing at 17:10

DM Series
Digital Signage Solutions

Introducing the latest generation of Digital Signage Displays

Hisense Digital Signage is designed to serve multiple business applications: public spaces, transportation systems, museums, stadiums, retail stores, hotels, restaurants and corporate buildings. With DM series, it delivers powerful engagement from any devices, boost business with real-time updates, data-driven insights and visually appealing content, manage and control devices at anytime from anywhere, and simplify the cable management by connecting a series of displays to a single video output.



Learn More: www.hisense-b2b.com | Contact Us: sales@hisense-b2b.com

LinkedIn: [@Hisense Commercial Display](#) | [@Hisense B2B Europe](#) | [@Hisense B2B USA](#) | [@Hisense B2B Australia](#)

Hisense | COMMERCIAL
DISPLAY

Learn More: www.hisense-b2b.com | Contact Us: sales@hisense-b2b.com

LinkedIn: [@Hisense Commercial Display](#) | [@Hisense B2B Europe](#) | [@Hisense B2B USA](#) | [@Hisense B2B Australia](#)

Hisense | COMMERCIAL
DISPLAY

DM Series - Highlights



500 Nits Brightness

With 500 nits maximum brightness, the display panels can deliver amazingly vivid imagery maintaining vibrant color accuracy during daytime and nighttime conditions, ideal for high-traffic retail and outdoor advertising environments.



Landscape & Portrait

The display seamlessly adapts to both portrait and landscape modes, enabling flexible installations in retail spaces, museums, stadiums, and corporate environments while maintaining 4K visual consistency across orientations.



Wireless Screen Sharing

Everything you need for screen sharing solutions. Screen Cast is a in house built-in screen sharing application that enables the screen sharing wirelessly and seamlessly from anywhere and from any devices.



Build-in VisionInfo

VisionInfo is a cloud-based device management software that offers end-to-end device management and control through all devices. It is a powerful, effective and easy to use tool to control your devices at anytime from anywhere.



Android 11

Android 11 works to keep your data safe and secure. With Android 11, you have more control over what information apps can and can't access. Devices that work better together, enhance your messaging, audio and multitasking experiences.



Anti-glare Coating

All displays offer higher haze panels that help reduce reflections without adversely affecting the image quality. Anti-glare coatings can also improve the perceived contrast of the display.



Smart Power

The backlight intensity can be controlled and pre-set by the system to reduce the power consumption, ENERGY STAR-certified, the display helps you protect the environment and save costs.



Conformal Coating

Electronic components are completely protected from the environmental factors like moisture, dust, salt, chemicals, temperature changes and mechanical abrasion.





4K UHD

Delivers superior resolution that allows more details to be displayed on an image. The materials, the textures, the skin texture and the backgrounds: everything is richer and more realistic. 4K UHD provides four times the resolution of Full HD (1080p), with a resolution of 3840 x 2160 pixels. This higher pixel density results in sharper and more detailed images and videos, which can significantly enhance the viewing experience.

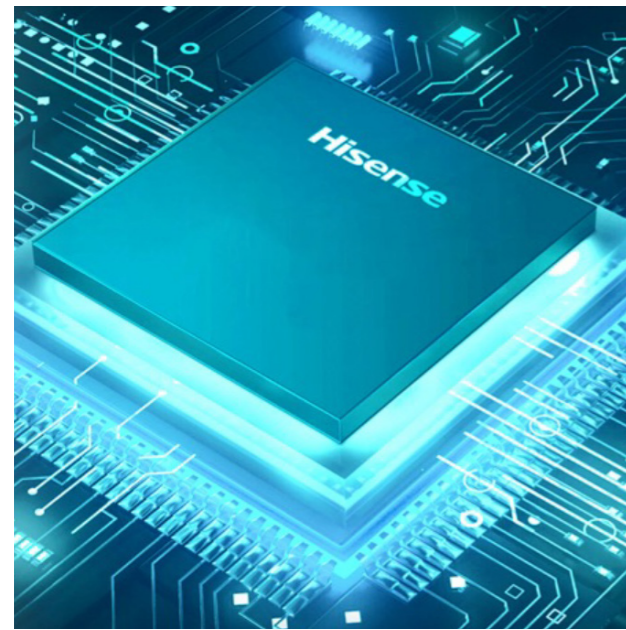
Anti Glare Coating

All DM Series Offers higher haze panel that helps with reflections without notably affecting the image quality.

By reducing glare, anti-glare coatings enhance the visibility of the display's content. This is crucial for digital signage, as it ensures that passersby and viewers can clearly see and read the information, advertisements, or messages being displayed. Improved visibility can lead to better communication and engagement.

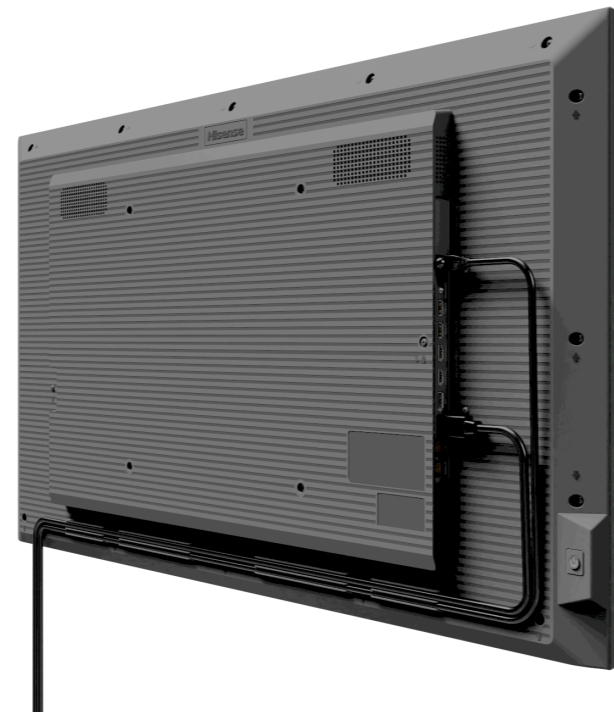
High Brightness

In outdoor settings or indoor environments with lots of ambient light, such as shopping malls, airports, or storefronts with large windows, high-brightness displays are essential. The DM Series displays deliver 500 nits brightness so they can overcome the challenges posed by direct sunlight or strong indoor lighting, ensuring that the content remains visible and legible even in bright conditions.



Android 11 - A Safer and Enhanced Experience

Android 11 works to keep your data safe and secure. With Android 11, you have more control over what information apps can and can't access. Devices that work better together, enhance your messaging, audio and multitasking experiences.



Clean Cable Solutions*

The integrated cable holder hides cables and keeps the back of the display tidy and uncluttered. This reduces visual distractions that can get in the way of your viewing experience.

*Except for 100"



Narrow Bezel*

The narrow bezel on the DM series digital signage display enhances the visual appeal, functionality, and effectiveness of the display in commercial applications. It allows for more seamless content presentation, improved aesthetics, and greater flexibility in designing engaging displays.

For presentations, conferences, or digital signage setups that require multiple screens, a narrow bezel ensures that the transition between different screens is seamless. It helps maintain the continuity of content across multiple displays, making it easier for viewers to follow presentations or messages.

*Except for 100"



Wireless Screen Sharing with Quad Split Screen

With Hisense DM series, you can eliminate the need for physical cables, adapters, and complex setup processes. Users can quickly and easily connect their devices (such as laptops, smartphones, or tablets) to the DM series digital signage displays without dealing with cable management, making it a user-friendly option.

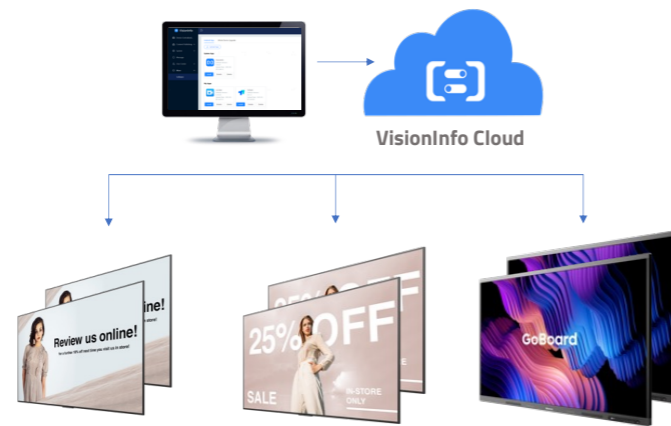
Software casting support quad split screen enhancing the usability and versatility our signage displays, making them more interactive, engaging and convenient for both presenters and viewers.



Why Choose VisionInfo for the DM Series

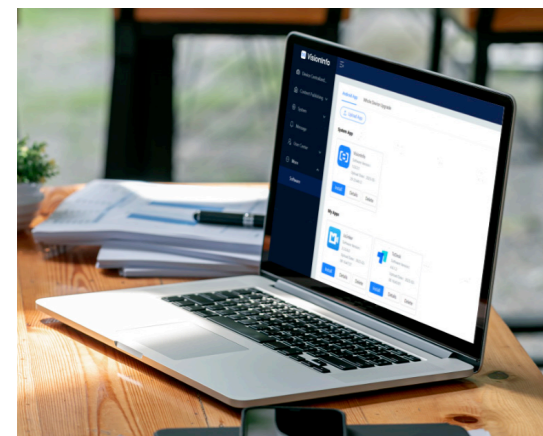
Flexible and Scalable Solutions

VisionInfo from Hisense is our cloud-based digital signage software which is flexible, cost-effective, and infinitely scalable for users. VisionInfo includes a comprehensive CMS solution and advanced remote display management features. It provides users the freedom to edit and publish content while ensuring it looks great across all displays in a system. It is a powerful, effective and easy to use tool to manage content and control your displays at anytime from anywhere.



Key Features

- Web browser editor UI
- Drag-and-drop visual editor
- Supports website integration
- Supports live streams
- Supports Office documents and PDF's
- Supports Widgets
- 4K resolution playback
- Offline content playback
- Program preview and publish approval
- Advanced program scheduler
- Custom template layouts
- Playback statistics



The Complete Solution

1

Intelligent Content Management

Effortlessly manage, customize and deliver your message with our intuitive CMS platform. Streamline content creation and engage your audience with our powerful, user-friendly platform.



Content Creation



Dynamic Scheduling



Content Publishing

2

Enterprise-Grade Device Management

Empower your business with remote monitoring and control of displays on an installation. Safeguard your digital content with the robust security features of VisionInfo. Protect your displays and marketing content from cyber threats, ensure data privacy, and enjoy total peace of mind.



Remote Monitoring



Complete Control



Error Notifications

3

Enhanced Data Management

Unlock the power of data with our advanced analytics and reporting feature within VisionInfo. Gain valuable insights, make data-driven decisions, and maximize the performance of your content.



Routine Automation



Data Analysis



Visual Reporting



Mobile Device Management

- View the status of remote displays - online/offline, CPU and memory running status
- Real-time display control - power off, screen sleep/wake up, reboot, switch signal source, screen lock/unlock, USB disable/enable
- Remote desktop real-time monitoring
- Scheduled tasks to control displays - power On/off, screen sleep/wake up
- Remote software management - APP installation and uninstallation, remote OS Upgrade
- Display usage statistics

Enhancing Engagement and Communication

Hisense 4K UHD digital signage displays ensure eye-catching visuals that enhance engagement, whether for advertising, real-time information updates, or interactive customer experiences. Retailers benefit from instant content updates for promotions, while corporate offices use them for seamless internal communication. In transportation hubs, Hisense displays provide real-time schedules and alerts, improving passenger convenience. Hisense offers commercial-grade durability, 24/7 operation, and anti-glare technology to ensure our displays perform reliably in high-traffic areas.



Specifications

Model	32DM66D	43DM66D	50DM66D/50DM66E	55DM66D
Backlight Type	DLED	DLED	DLED	DLED
Type	ADS	ADS	50DM66D - VA 50DM66E - IPS	ADS
Size	32"	43"	50"	55"
Resolution	1920 x 1080	3840 x 2160	3840 x 2160	3840 x 2160
Refresh rate	60Hz	60Hz	60Hz	60Hz
Color Depth	16.7M (8 Bits)	1.07G (8 Bits+FRC)	1.07G (8 Bits+FRC)	1.07G (8 Bits+FRC)
Brightness(Typ.)	500 nits	500 nits	500 nits	500 nits
Contrast Ratio(Typ.)	1200:1	1200:1	5000:1 / 1200:1	1200:1
Response Time(Typ.)	8ms	8ms	8ms	8ms
Viewing Angle(Min.)	178° /178°	178° /178°	178° /178°	178° /178°
Color Gamut(Typ.)	72% NTSC	72% NTSC	50DM66D - 90% DCI-P3 50DM66E - 72% NTSC	72% NTSC
Haze	25%	25%	25%	25%
Orientation	Landscape & Portrait	Landscape & Portrait	Landscape & Portrait	Landscape & Portrait
Lifetime	up to 50,000 hrs	up to 50,000 hrs	up to 50,000 hrs	up to 50,000 hrs
Operation Hours	7Day x 24Hour	7Day x 24Hour	7Day x 24Hour	7Day x 24Hour

System

Operating System	Android 11	Android 11	Android 11	Android 11
Processor CPU	ARM Cortex-A55 Quad core	ARM Cortex-A55 Quad core	ARM Cortex-A55 Quad core	ARM Cortex-A55 Quad core
Processor GPU	Mali-G52	Mali-G52	Mali-G52	Mali-G52
Memory	3G DDR4	3G DDR4	50DM66D - 3G DDR4 50DM66E - 3GB DDR4	3G DDR4
Storage	32G EMMC	32G EMMC	50DM66D - 32G EMMC 50DM66E - 32GB EMMC	32G EMMC
Language	Simplified Chinese, English, French, German, Polish, Spanish, Russian, Italian, Finnish, Norwegian, Swedish, Hebrew, Arabic, Thai, Malay, Indonesian			

Connectivity

WI-FI	2.4/5.0GHz dual,802.11a/b/g/n/ac	2.4/5.0GHz dual,802.11a/b/g/n/ac	2.4/5.0GHz dual,802.11a/b/g/n/ac	2.4/5.0GHz dual,802.11a/b/g/n/ac
Bluetooth	BT5.1	BT5.1	BT5.1	BT5.1
Input	HDMI(2.0) x 2 DP(1.2a) x 1 USB2.0(A) x 1 USB3.0(A) x 1 RS232(RJ45) x 1 LAN(RJ45) x 1	HDMI(2.0) x 2 DP(1.2a) x 1 USB2.0(A) x 1 USB3.0(A) x 1 RS232(RJ45) x 1 LAN(RJ45) x 1	HDMI(2.0) x 2 DP(1.2a) x 1 USB2.0(A) x 1 USB3.0(A) x 1 RS232(RJ45) x 1 LAN(RJ45) x 1	HDMI(2.0) x 2 DP(1.2a) x 1 USB2.0(A) x 1 USB3.0(A) x 1 RS232(RJ45) x 1 LAN(RJ45) x 1
Output	HDMI x 1 Audio(3.5mm) x 1 RS232(RJ45) x 1	HDMI x 1 Audio(3.5mm) x 1 RS232(RJ45) x 1	HDMI(2.0) x 1 Audio(3.5mm) x 1 RS232(RJ45) x 1	HDMI x 1 Audio(3.5mm) x 1 RS232(RJ45) x 1

Physical

Bezel Color	Black	Black	Black	Black
Set Dimension (W×H×D)	726 x 420.6 x 61.5mm 25.6 x 16.6 x 2.4inch	970.4 x 557.5 x 62.8mm 38.20 x 21.9 x 2.5inch	1124.1 x 644.2 x 62.5mm 44.26 x 25.36 x 2.46inch	1239.7 x 710.2 x 63.3mm 48.8 x 28 x 2.5inch
Bezel width(T/L/R/B)	10.1mm(T/L/R), 10.3mm(B)	10.1mm(T/L/R), 10.3mm(B)	10.4mm(T/L/R), 11.1mm(B)	10.1mm(T/L/R), 10.6mm(B)
Net Weight	4.6kg / 10.1lbs	8.5kg / 18.7lbs	11kg / 24.3lbs	13.9kg / 30.6lbs
Packing Dimension (W×H×D)	820 x 512 x 126mm 32.3 x 20.2 x 5inch	1092 x 663 x 145mm 43 x 26.1 x 5.7inch	1251 x 777 x 154mm 49.2 x 30.6 x 6.1inch	1387 x 838 x 159mm 54.6 x 33 x 6.3inch
Gross Weight	6.5kg / 14.33lbs	12.5kg / 27.56lbs	16.2kg / 35.7lbs	19.5kg / 43lbs
VESA Mount	200mm x 200mm	300mm x 300mm	300mm x 300mm	300mm x 300mm

* Product specifications may vary per region, and specifications are subject to change. This material may include corporate names and trademarks of third parties which are the properties of the third parties respectively.

Learn More: www.hisense-b2b.com | Contact Us: sales@hisense-b2b.com

LinkedIn: [@Hisense Commercial Display](#) | [@Hisense B2B Europe](#) | [@Hisense B2B USA](#) | [@Hisense B2B Australia](#)

Hisense COMMERCIAL DISPLAY

Specifications

Model	65DM66D	75DM66D	86DM66D	100DM66E
Backlight Type	DLED	DLED	DLED	DLED
Type	ADS	ADS	ADS	VA
Size	65"	75"	86"	100"
Resolution	3840 x 2160	3840 x 2160	3840 x 2160	3840 x 2160
Refresh rate	60Hz	60Hz	60Hz	60Hz
Color Depth	1.07G (8 Bits+FRC)	1.07G (8 Bits+FRC)	1.07G (8 Bits+FRC)	1.07B(10bit)
Brightness(Typ.)	500 nits	500 nits	500 nits	500 nits
Contrast Ratio(Typ.)	1200:1	1200:1	1200:1	5000:1
Response Time(Typ.)	8ms	8ms	8ms	8ms
Viewing Angle(Min.)	178° /178°	178° /178°	178° /178°	178° /178°
Color Gamut(Typ.)	72% NTSC	72% NTSC	72% NTSC	90% DCI-P3
Haze	25%	25%	25%	25%
Orientation	Landscape & Portrait	Landscape & Portrait	Landscape & Portrait	Landscape & Portrait
Lifetime	up to 50,000 hrs	up to 50,000 hrs	up to 50,000 hrs	up to 50,000 hrs
Operation Hours	7Day x 24Hour	7Day x 24Hour	7Day x 24Hour	7Day x 24Hour

System

Operating System	Android 11	Android 11	Android 11	Android 11
Processor CPU	ARM Cortex-A55 Quad core	ARM Cortex-A55 Quad core	ARM Cortex-A55 Quad core	ARM Cortex-A55 Quad core
Processor GPU	Mali-G52	Mali-G52	Mali-G52	Mali-G52
Memory	3G DDR4	3G DDR4	3G DDR4	3G DDR4
Storage	32G EMMC	32G EMMC	32G EMMC	32G EMMC
Language	Simplified Chinese, English, French, German, Polish, Spanish, Russian, Italian, Finnish, Norwegian, Swedish, Hebrew, Arabic, Thai, Malay, Indonesian			

Connectivity

WI-FI	2.4/5.0GHz dual,802.11a/b/g/n/ac	2.4/5.0GHz dual,802.11a/b/g/n/ac	2.4/5.0GHz dual,802.11a/b/g/n/ac	2.4/5.0GHz dual,802.11a/b/g/n/ac
Bluetooth	BT5.1	BT5.1	BT5.1	BT5.1
Input	HDMI(2.0) x 2 DP(1.2a) x 1 USB2.0(A) x 1 USB3.0(A) x 1 RS232(RJ45) x 1 LAN(RJ45) x 1	HDMI(2.0) x 2 DP(1.2a) x 1 USB2.0(A) x 1 USB3.0(A) x 1 RS232(RJ45) x 1 LAN(RJ45) x 1	HDMI(2.0) x 2 DP(1.2a) x 1 USB2.0(A) x 1 USB3.0(A) x 1 RS232(RJ45) x 1 LAN(RJ45) x 1	HDMI(2.0) x 2 DP(1.2a) x 1 USB2.0(A) x 1 USB3.0(A) x 1 RS232(RJ45) x 1 LAN(RJ45) x 1
Output	HDMI x 1 Audio(3.5mm) x 1 RS232(RJ45) x 1	HDMI x 1 Audio(3.5mm) x 1 RS232(RJ45) x 1	HDMI(2.0) x 1 Audio(3.5mm) x 1 RS232(RJ45) x 1	HDMI x 1 Audio(3.5mm) x 1

Physical

Bezel Color	Black	Black	Black	Black
Set Dimension (W×H×D)	1458.9 x 832.8 x 63.7mm 57.4 x 32.8 x 2.5inch	1675.3 x 955.1 x 63.7mm 66 x 37.6 x 2.5inch	1926.6 x 1095.5 x 64.2mm 75.9 x 43.1 x 2.5inch	2234.6 x 1285.6 x 86.5mm 88 x 50.6 x 3.4inch
Bezel width(T/L/R/B)	10.4mm(T/L/R), 10.9mm(B)	10.3mm(T/L/R), 10.8mm(B)	10.3mm(T/L/R), 10.8mm(B)	13.2mm(T/L/R), 19mm(B)
Net Weight	21.5kg / 47.4lbs	29kg / 63.9lbs	38.2kg / 84.2lbs	58.7kg / 129.41lbs
Packing Dimension (W×H×D)	1629 x 997 x 160mm 64.1 x 39.0 x 6.3inch	1850 x 1150 x 211mm 72.8 x 45.3 x 8.3inch	2117 x 1298 x 269mm 83.3 x 51.1 x 10.6inch	2402 x 1514 x 297mm 94.57 x 59.61 x 11.69 inch
Gross Weight	30kg / 66.1lbs	41.6kg / 91.7lbs	59.5kg / 131.2lbs	76.2kg / 168lbs
VESA Mount	400mm x 400mm	600mm x 400mm	600mm x 400mm	600mm x 600mm (Landscape) 600mm x 1000mm (Portrait)

* Product specifications may vary per region, and specifications are subject to change. This material may include corporate names and trademarks of third parties which are the properties of the third parties respectively.

Learn More: www.hisense-b2b.com | Contact Us: sales@hisense-b2b.com

LinkedIn: [@Hisense Commercial Display](#) | [@Hisense B2B Europe](#) | [@Hisense B2B USA](#) | [@Hisense B2B Australia](#)

Hisense COMMERCIAL DISPLAY

Power

Model	32DM66D	43DM66D	50DM66D/50DM66E	55DM66D
Power Supply	AC 100-240V (50/60Hz)	AC 100-240V (50/60Hz)	AC 100-240V (50/60Hz)	AC 100-240V (50/60Hz)
Power Consumption (Typ.)	52W	80W	100W	115W
Power Consumption (Max.)	60W	120W	150W	190W
Standby Consumption	<0.5W (Standby Mode)	<0.5W (Standby Mode)	<0.5W (Standby Mode)	<0.5W (Standby Mode)

Speaker

Built in speaker	10W x 2	10W x 2	10W x 2	10W x 2
------------------	---------	---------	---------	---------

Environment

Operating Temperature	0°-40°C	0°-40°C	0°-40°C	0°-40°C
Operating Humidity	10%-80% Non-Condensing	10%-80% Non-Condensing	10%-80% Non-Condensing	10%-80% Non-Condensing

What's in the box

Standard	
	Quick Setup Guide
	Warranty Card
	Power Cord
	Remote Control
	Battery (AAA) x 2
	RS232 Converter Cable

Certification

Standard Certification	CCC/CB/CE/FCC/ETUUVus/AJKA/CEC/ERP
Safety	62368-1
Environment	Energy Star 8.0
IP Rating	IP5X (Excluding 100")



Power

Model	65DM66D	75DM66D	86DM66D	100DM66E
Power Supply	AC 100-240V (50/60Hz)	AC 100-240V (50/60Hz)	AC 100-240V (50/60Hz)	AC 100-240V (50/60Hz)
Power Consumption (Typ.)	145W	175W	200W	240W
Power Consumption (Max.)	210W	265W	325W	450W
Standby Consumption	<0.5W (Standby Mode)	<0.5W (Standby Mode)	<0.5W (Standby Mode)	<0.5W (Standby Mode)

Speaker

Built in speaker	10W x 2	10W x 2	10W x 2	15W x 2
------------------	---------	---------	---------	---------

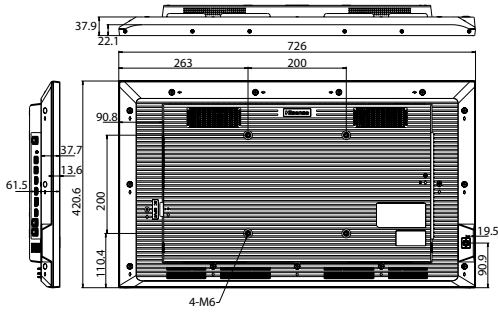
Environment

Operating Temperature	0°-40°C	0°-40°C	0°-40°C	0°-40°C
Operating Humidity	10%-80% Non-Condensing	10%-80% Non-Condensing	10%-80% Non-Condensing	10%-80% Non-Condensing

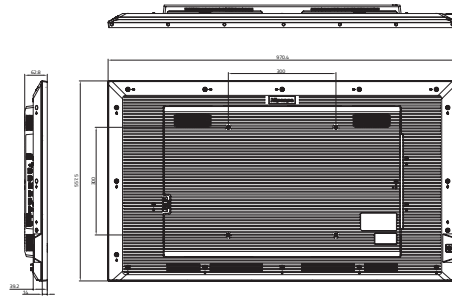


Dimensions

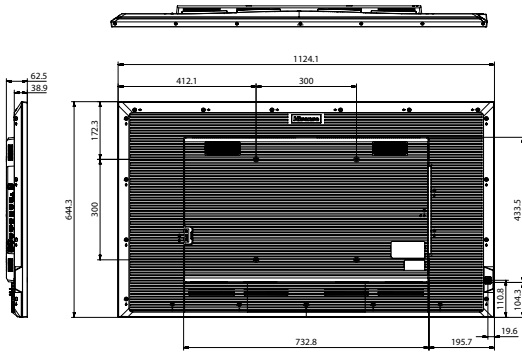
32" 726 x 420.6 x 61.5mm / 25.6 x 16.6 x 2.4inch
4.6kg / 10.1lbs



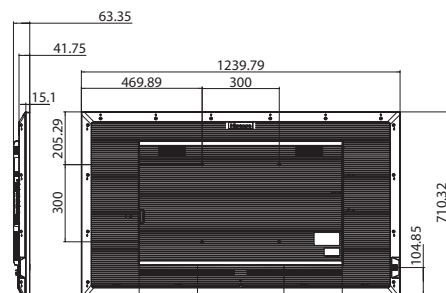
43" 970.4 x 557.5 x 62.8mm / 38.20 x 21.9 x 2.5inch
8.5kg / 18.7lbs



50" 1124.1 x 644.3 x 62.5mm / 44.26 x 25.36 x 2.46inch
11kg / 24.3lbs



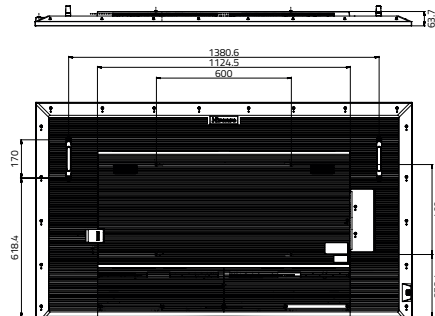
55" 1239.7 x 710.2 x 63.3mm / 48.8 x 28 x 2.5inch
13.9kg / 30.6lbs



65" 1458.9 x 832.8 x 63.7mm / 57.4 x 32.8 x 2.5inch
21.5kg / 47.4lbs

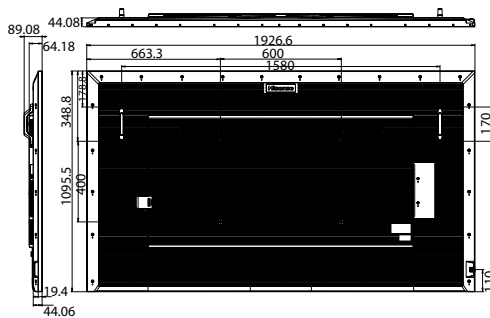


75" 1675.3 x 955.1 x 63.7mm / 66 x 37.6 x 2.5inch
29kg / 63.9lbs

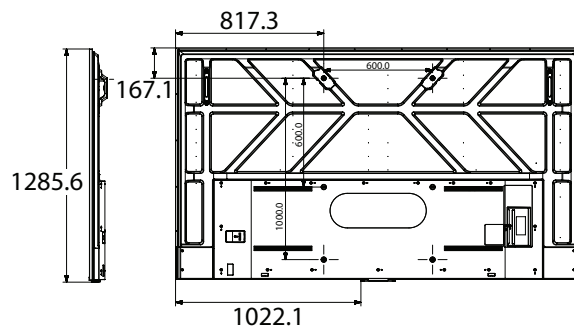


59.6kg / 131.4lbs

86" 1926.6 x 1095.5 x 64.2mm / 75.9 x 43.1 x 2.5inch
38.2kg / 84.2lbs



100" 2234.6 x 1285.6 x 86.5mm / 88 x 50.6 x 3.4inch
59.6kg / 131.4lbs



Ovaj dokument je originalno proizveden i objavljen od strane proizvođača, brenda Hisense, i preuzet je sa njihove zvanične stranice. S obzirom na ovu činjenicu, Tehnoteka ističe da ne preuzima odgovornost za tačnost, celovitost ili pouzdanost informacija, podataka, mišljenja, saveta ili izjava sadržanih u ovom dokumentu.

Napominjemo da Tehnoteka nema ovlašćenje da izvrši bilo kakve izmene ili dopune na ovom dokumentu, stoga nismo odgovorni za eventualne greške, propuste ili netačnosti koje se mogu naći unutar njega. Tehnoteka ne odgovara za štetu nanесenu korisnicima pri upotrebi netačnih podataka. Ukoliko imate dodatna pitanja o proizvodu, ljubazno vas molimo da kontaktirate direktno proizvođača kako biste dobili sve detaljne informacije.

Za najnovije informacije o ceni, dostupnim akcijama i tehničkim karakteristikama proizvoda koji se pominje u ovom dokumentu, molimo posetite našu stranicu klikom na sledeći link:

<https://tehnoteka.rs/p/hisense-displej-100-va-4k-digital-signage-100dm66e-akcija-cena/>