

Uputstvo za upotrebu (EN)

TP-LINK TL-PA4010 KIT AV500 Nano Powerline Adapter



Tehnoteka je online destinacija za upoređivanje cena i karakteristika bele tehnike, potrošačke elektronike i IT uređaja kod trgovinskih lanaca i internet prodavnica u Srbiji. Naša stranica vam omogućava da istražite najnovije informacije, detaljne karakteristike i konkurentne cene proizvoda.

Posetite nas i uživajte u ekskluzivnom iskustvu pametne kupovine klikom na link:

<https://tehnoteka.rs/p/tp-link-tl-pa4010-kit-av500-nano-powerline-adapter-akcija-cena/>

Quick Installation Guide

AV500 Nano Powerline Adapter

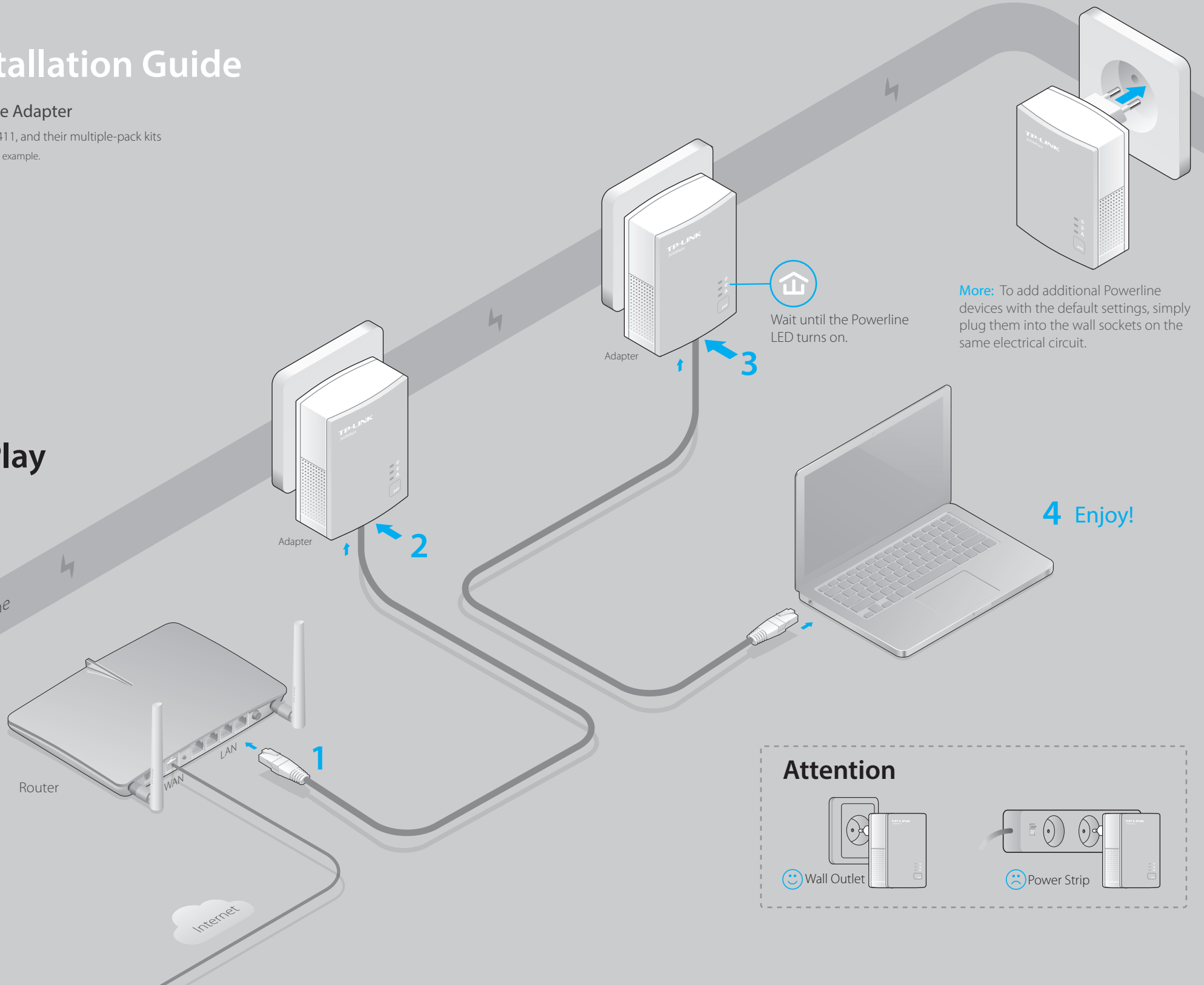
Applicable to TL-PA4010, TL-PA411, and their multiple-pack kits

*This QIG uses TL-PA4010KIT(EU) as an example.

7106505257 REV2.0.0

Plug and Play

Powerline

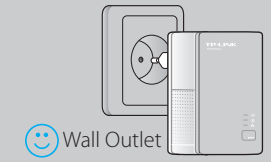


Wait until the Powerline LED turns on.

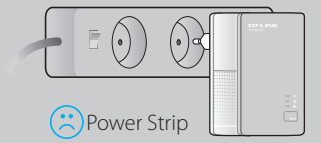
More: To add additional Powerline devices with the default settings, simply plug them into the wall sockets on the same electrical circuit.

4 Enjoy!

Attention



Wall Outlet



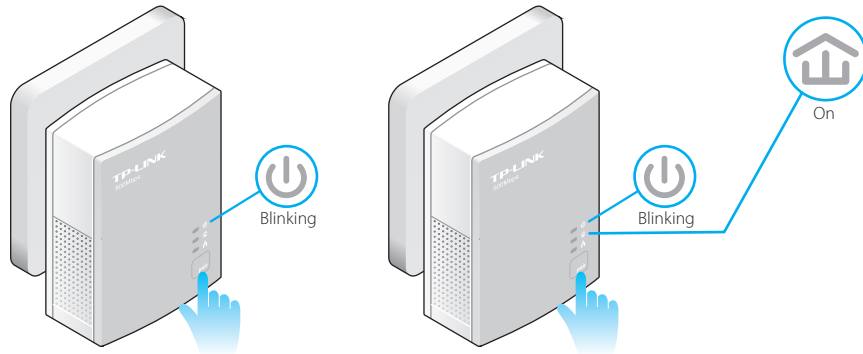
Power Strip

Set Up a Secure Powerline Network by Pairing (Recommended)

You can use the Pair button on **two devices at a time** to create or join a secure powerline network.

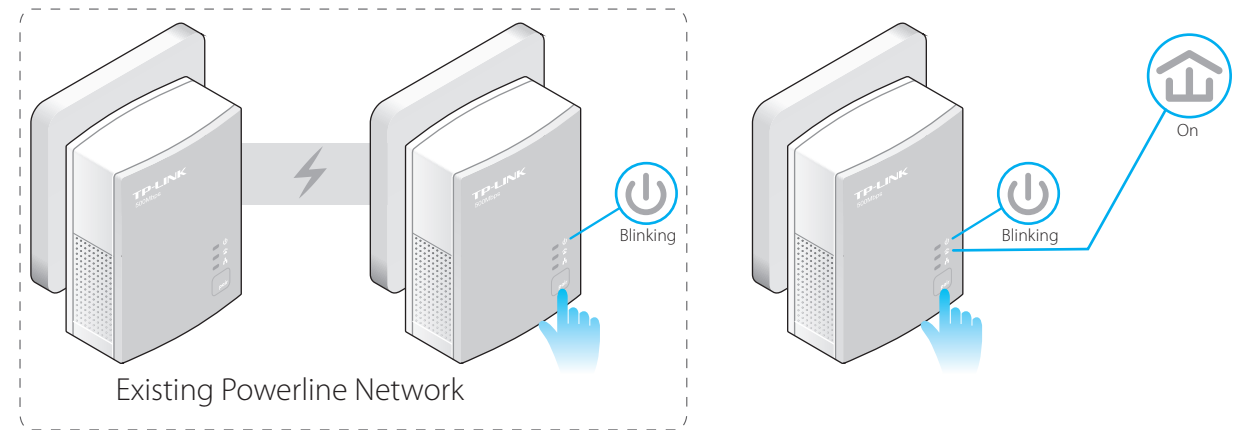
To create a secure powerline network:

- 1 Press the **Pair** button on one adapter.
- 2 Press the **Pair** button on another adapter.
- 3 Done.



To join an existing secure powerline network:

- 1 Press the **Pair** button on any powerline adapter in the existing powerline network.
- 2 Press the **Pair** button on the new adapter.
- 3 Done.



LED and Button Legend

LED	STATUS	DESCRIPTION
Power	On/Off	The powerline adapter is on or off.
	Blinking	Once every second: Pairing is in process.
		Once every 15 seconds: Power-Saving Mode is on.*
Powerline	On	The powerline adapter is connected to a powerline network.
	Blinking	The powerline adapter is transferring data.
	Off	The powerline adapter is not connected to any powerline network or is in Power-Saving Mode.
Ethernet	On/Off	The Ethernet port is connected or not connected.
	Blinking	The Ethernet port is transferring data.

* Five minutes after the connecting device is turned off, the powerline adapter will automatically switch to Power-Saving Mode.

BUTTON	DESCRIPTION
Pair	Press and hold for 1 second to set up or join a secure powerline network. Press and hold for 8 seconds to leave an existing powerline network.

FAQ (Frequently Asked Questions)

Q1. How to troubleshoot if there is no Internet connection after pairing the adapters?

- A1. Check if you have an Internet connection by connecting the computer directly to the modem or router.
- A2. Check the hardware connection between your modem and router.
- A3. Make sure all the Powerline LEDs are on. If they are not, reset or pair all your powerline devices again.
- A4. Make sure your computer's IP address is in the same segment as your router's.
- A5. Make sure all powerline devices are on the same electrical circuit.

Q2. What can I do if a successfully-paired powerline adapter does not reconnect after it has been moved to a new location?

- A1. Make sure all powerline devices are on the same electrical circuit.
- A2. Try to pair it again with another powerline device, and make sure the Powerline LED is on before moving it to a new location.
- A3. Check for possible interference, such as washers, air conditioners or other household appliances that may be too close to one of the powerline devices.



<http://www.tp-link.com/en/support/faq>

Scan the QR code to access the Technical Support page.

More advanced configurations, such as reset, firmware upgrade and QoS configuration, can be accessed through the Powerline Utility. You can install the Powerline Utility from the resource CD (for Windows only) or download it from the TP-LINK official website (for Windows and Mac OS X).

Ovaj dokument je originalno proizveden i objavljen od strane proizvođača, brenda TP-Link, i preuzet je sa njihove zvanične stranice. S obzirom na ovu činjenicu, Tehnoteka ističe da ne preuzima odgovornost za tačnost, celovitost ili pouzdanost informacija, podataka, mišljenja, saveta ili izjava sadržanih u ovom dokumentu.

Napominjemo da Tehnoteka nema ovlašćenje da izvrši bilo kakve izmene ili dopune na ovom dokumentu, stoga nismo odgovorni za eventualne greške, propuste ili netačnosti koje se mogu naći unutar njega. Tehnoteka ne odgovara za štetu nanесenu korisnicima pri upotrebi netačnih podataka. Ukoliko imate dodatna pitanja o proizvodu, ljubazno vas molimo da kontaktirate direktno proizvođača kako biste dobili sve detaljne informacije.

Za najnovije informacije o ceni, dostupnim akcijama i tehničkim karakteristikama proizvoda koji se pominje u ovom dokumentu, molimo posetite našu stranicu klikom na sledeći link:

<https://tehnoteka.rs/p/tp-link-tl-pa4010-kit-av500-nano-powerline-adapter-akcija-cena/>