

## Informacije o proizvodu (EN)

TP-LINK TL-SG1008 switch



Tehnoteka je online destinacija za upoređivanje cena i karakteristika bele tehnike, potrošačke elektronike i IT uređaja kod trgovinskih lanaca i internet prodavnica u Srbiji. Naša stranica vam omogućava da istražite najnovije informacije, detaljne karakteristike i konkurentne cene proizvoda.

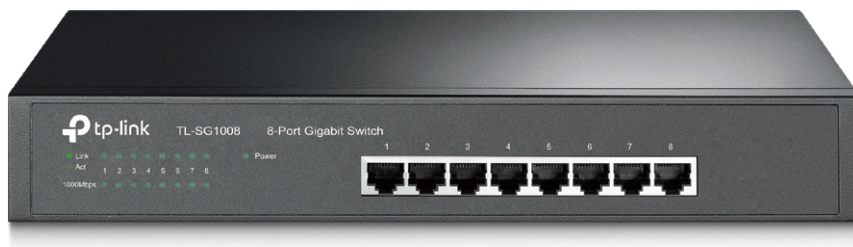
Posetite nas i uživajte u ekskluzivnom iskustvu pametne kupovine klikom na link:

<https://tehnoteka.rs/p/tp-link-tl-sg1008-switch-akcija-cena/>



# 8-Port Gigabit Desktop/Rackmount Switch

MODEL: TL-SG1008 (UN) 9.0 Datasheet



## Overview

The TL-SG1008 provides 8 10/100/1000Mbps RJ45 ports, with all ports support Auto-MDI/MDIX, there is no need to worry about the type of cable to use. Featuring full duplex mode, TL-SG1008 can process data at a rate up to 2000Mbps, making it an ideal choice for expanding your high performance wired network. Moreover, with innovative energy-efficient technology, TL-SG1008 can save the power consumption, making it an eco-friendly solution for your home or office network.

## Gigabit Expansion Solution

- 8 10/100/1000Mbps ports provide up to 16Gbps Switching Capacity
- 16KB Jumbo Frame improves performance of large data transfers
- IEEE 802.3x flow control provides reliable data transfer

## Highlight Performance


- 802.1p and DSCP QoS ensures smooth traffic
- IGMP Snooping optimizes multicast applications
- Fanless design ensures quiet operation

## Easy to Use

- Just plug & play, no configuration required
- Auto MDI/MDIX eliminates the need for crossover cables
- Auto-negotiation intelligently adjusts for compatibility and optimal performance

# Specifications

## Hardware Features & Performance

Product Picture	
Model	TL-SG1008
Standards	IEEE 802.3, IEEE 802.3u, IEEE 802.3ab, IEEE 802.3x, IEEE 802.1p
Network Ports	8*10/100/1000Mbps RJ45 ports
Auto Negotiation	YES
Auto MDI/MDIX	YES
Forwarding Mode	Store and Forward
Switch Capacity	16 Gbps
MAC Address Table	4K
Jumbo Frame	16KB
Flow Control	YES
Advanced Features	802.1p/DSCP QoS
Fanless	YES
Max Power Consumption	4.3W (220V/50Hz)
Max Heat Dissipation	14.67 BTU/h
LED	Power, 1000Mbps, Link/Act
Dimensions	294*180*44 mm
Operating Temperature	0°C to 40 °C (32 °F to 104°F)
Storage Temperature	-40 °C to 70 °C (-40 °F to 158°F)
Operating Humidity	10% to 90% non-condensing
Storage Humidity	5% to 90% non-condensing
Ordering Information	8-Port Gigabit switch

[www.tp-link.com](http://www.tp-link.com)

Specifications are subject to change without notice. TP-Link is a registered trademark of TP-Link Technologies Co., Ltd. Other brands and product names are trademarks or registered trademarks of their respective holders. Copyright © 2017 TP-Link Technologies Co., Ltd. All rights reserved.

Ovaj dokument je originalno proizveden i objavljen od strane proizvođača, brenda TP-Link, i preuzet je sa njihove zvanične stranice. S obzirom na ovu činjenicu, Tehnoteka ističe da ne preuzima odgovornost za tačnost, celovitost ili pouzdanost informacija, podataka, mišljenja, saveta ili izjava sadržanih u ovom dokumentu.

Napominjemo da Tehnoteka nema ovlašćenje da izvrši bilo kakve izmene ili dopune na ovom dokumentu, stoga nismo odgovorni za eventualne greške, propuste ili netačnosti koje se mogu naći unutar njega. Tehnoteka ne odgovara za štetu nanесenu korisnicima pri upotrebi netačnih podataka. Ukoliko imate dodatna pitanja o proizvodu, ljubazno vas molimo da kontaktirate direktno proizvođača kako biste dobili sve detaljne informacije.

Za najnovije informacije o ceni, dostupnim akcijama i tehničkim karakteristikama proizvoda koji se pominje u ovom dokumentu, molimo posetite našu stranicu klikom na sledeći link:

<https://tehnoteka.rs/p/tp-link-tl-sg1008-switch-akcija-cena/>