

Informacije o proizvodu (EN)

TP-LINK AC1200 Archer C54 WiFi ruter



Tehnoteka je online destinacija za upoređivanje cena i karakteristika bele tehnike, potrošačke elektronike i IT uređaja kod trgovinskih lanaca i internet prodavnica u Srbiji. Naša stranica vam omogućava da istražite najnovije informacije, detaljne karakteristike i konkurentne cene proizvoda.

Posetite nas i uživajte u ekskluzivnom iskustvu pametne kupovine klikom na link:

<https://tehnoteka.rs/p/tp-link-ac1200-archer-c54-wifi-ruter-akcija-cena/>



AC1200 Dual Band Wi-Fi Router

3in1:
Router,
Access Point,
Range Extender



Archer C54



Dual-Band Wi-Fi
867 Mbps + 300 Mbps†



Extensive Range
with Beamforming



IPTV and 4K TV
Supported

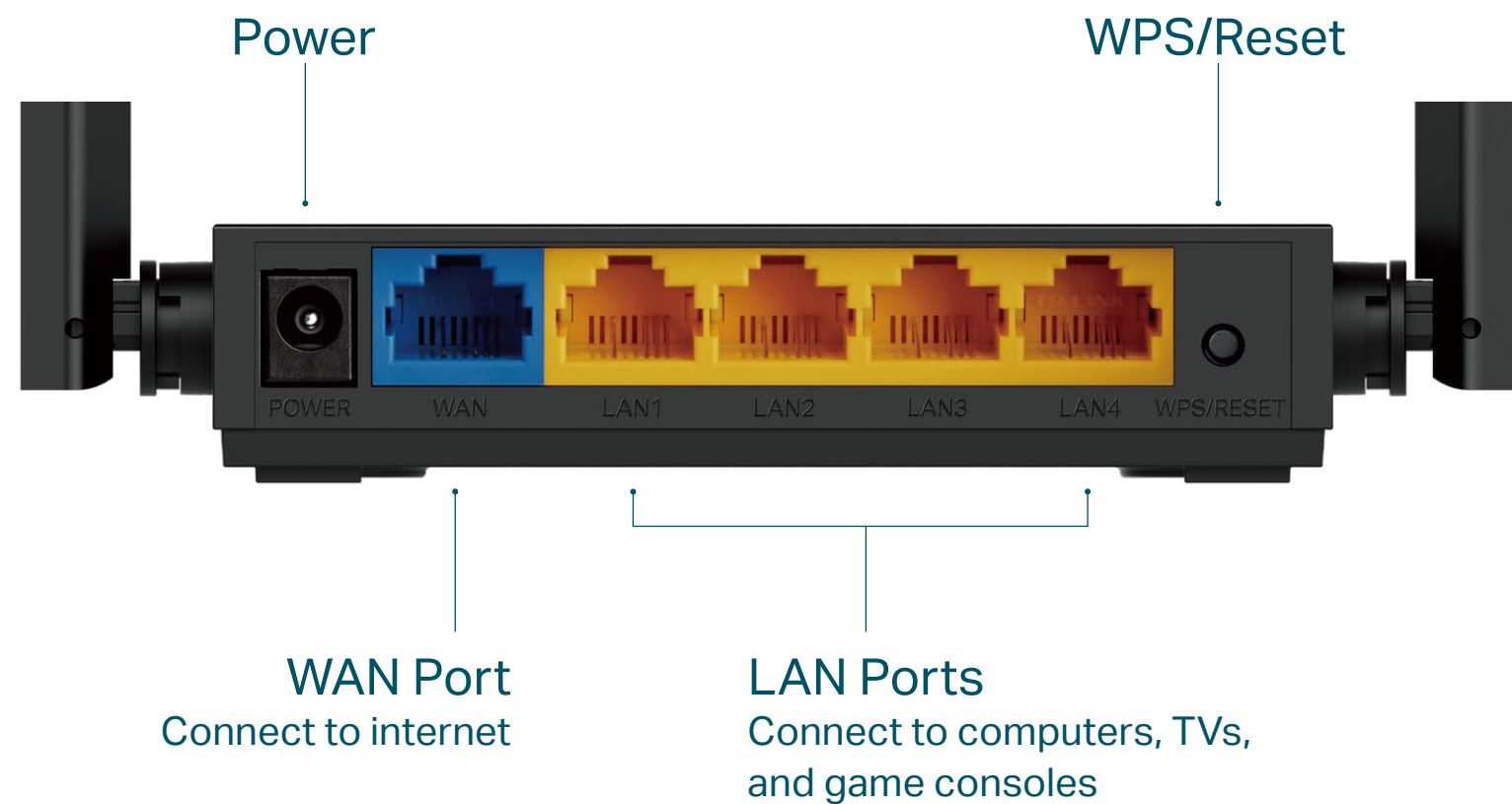


Multiple-Modes

Highlights

Fast Connections

Enjoy internet with the dual-band Wi-Fi and 4 fast LAN ports. Equipped with 4 omni-directional antennas, Archer C54 generates a 2.4 GHz Wi-Fi across your house and a fast 5 GHz Wi-Fi, letting the whole family enjoy reliable Wi-Fi on every device.



3 Modes in 1

Router Mode (Default)

Plug in an Ethernet cable to instantly create a private wireless network and share internet access with all your Wi-Fi devices.



Access Point Mode

Transform your existing wired network into a wireless one.



Range Extender Mode

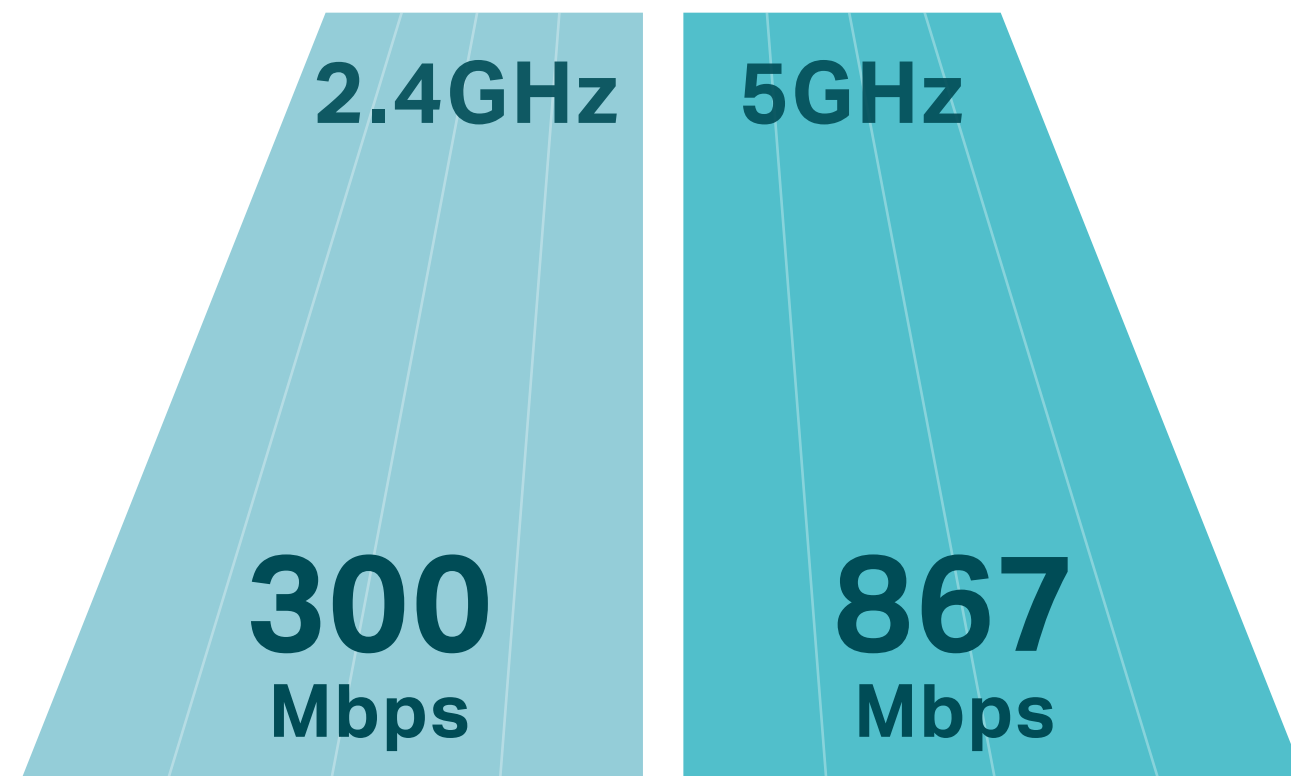
Boost the existing wireless coverage in your house.



Highlights

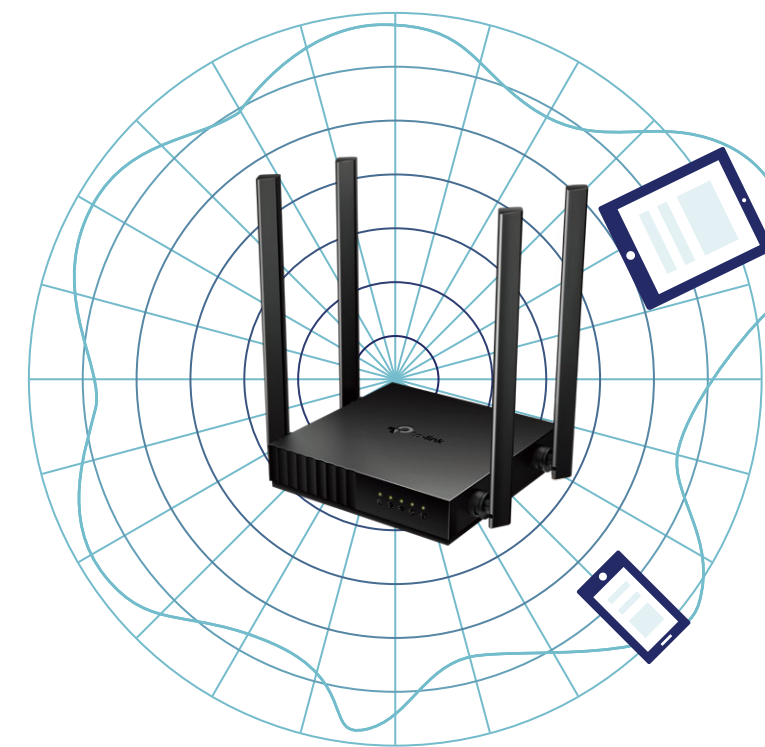
Wi-Fi Speeds Ideal for 4K

867 Mbps on 5 GHz and 300 Mbps on 2.4 GHz are ideal for both everyday tasks and 4K streaming without buffering.†

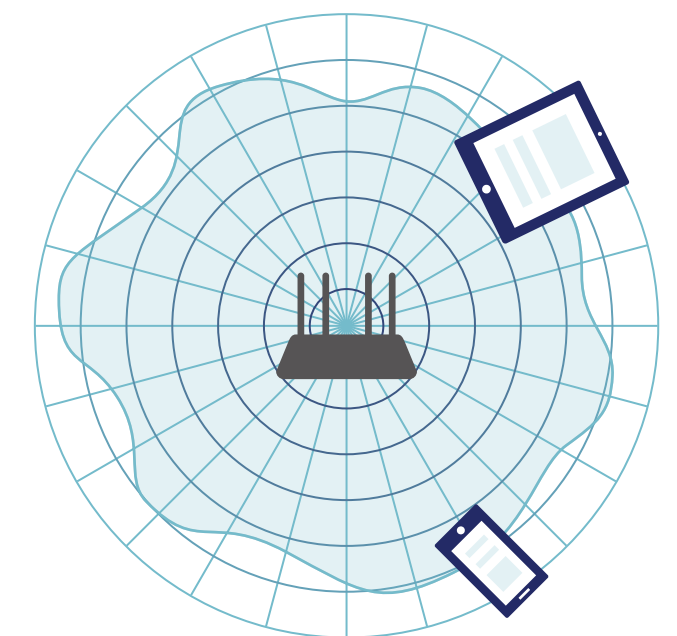


Beamforming

Beamforming detect the location of your connected devices and concentrates signals towards them to optimize wireless connections.



Archer C54

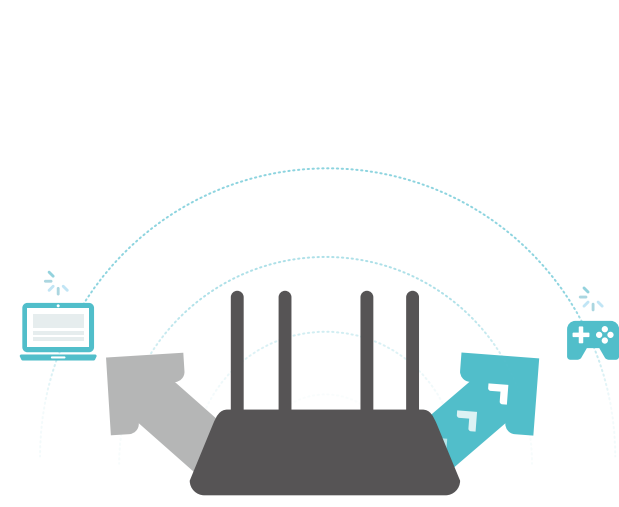


Regular Router

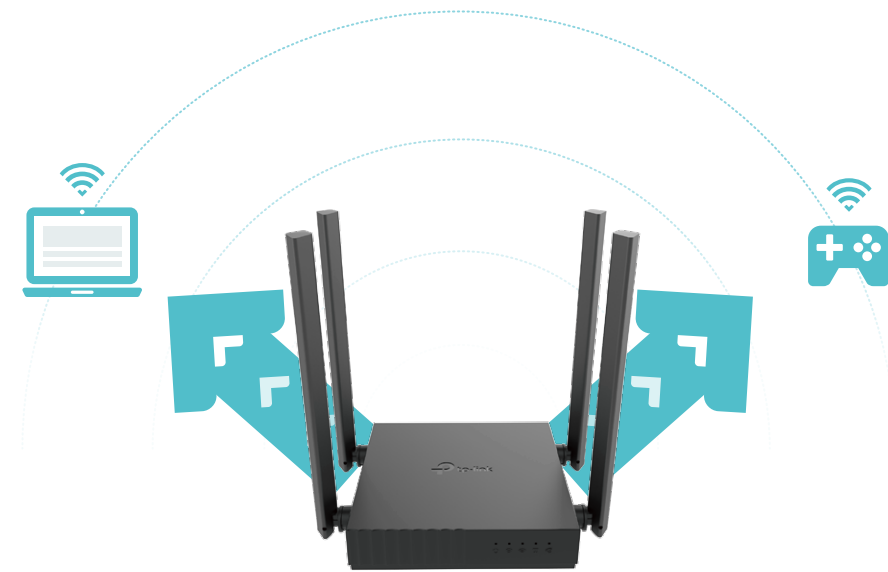
Highlights

MU-MIMO

MU-MIMO technology serves multiple devices at once, reducing wait time, and making each stream more efficient.†



Traditional Router



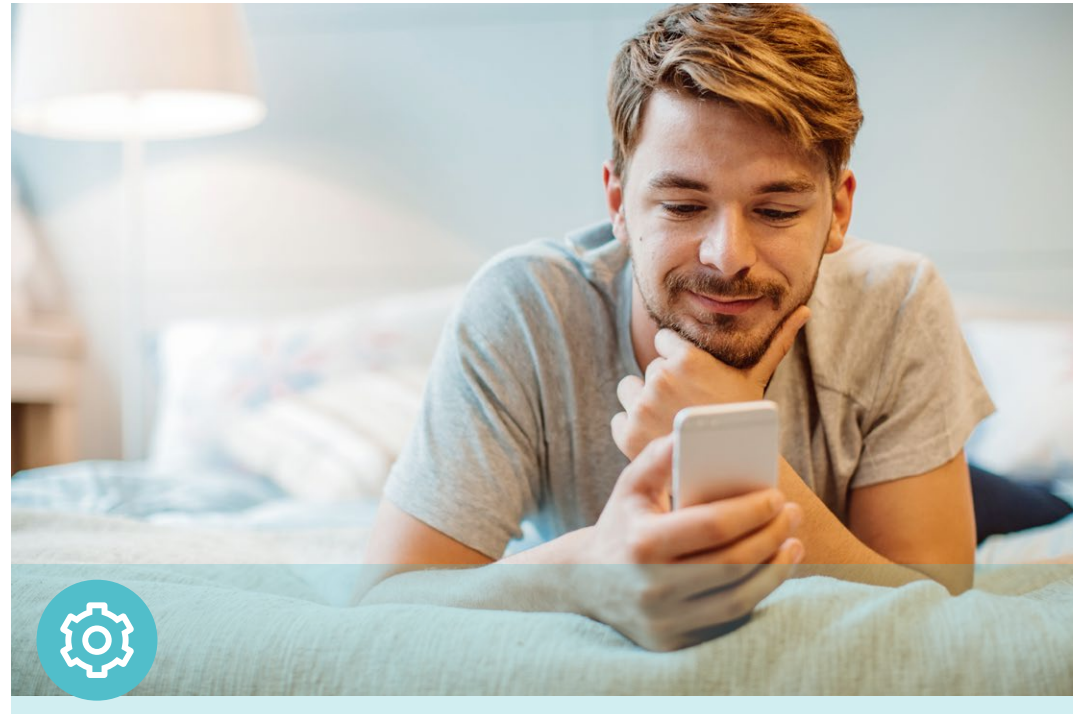
MU-MIMO Router

Versatile Management

Block inappropriate content and set daily limits for the total time children/staff spend online through Parental Controls. Guest Network creates a separate access point for guests, to ensure your privacy is secure.



Features



Ease of Use

- WPS – Make secure wireless connection quick and easy with the push of a button
- Compact and Mountable – Designed to conserve space and complement any décor.
- Intuitive Web UI – Ensure quick and simple installation without hassle
- Hassle-free Management with Tether App – Network management is made easy with the TP-Link Tether App, available on any Android or iOS device



Reliability

- Ultimate Wireless Speed – 300 Mbps on 2.4 GHz and 867 Mbps on 5 GHz Wi-Fi speed for lag-free work
- 802.11ac – Backward compatible with 802.11b/g/n products
- IPTV – Support IGMP Proxy/Snooping, Bridge and Tag VLAN to optimize IPTV streaming
- QoS– Advanced QoS makes it easier for you to manage the bandwidth of connected devices
- IPV6 – Supports IPV6 to work with more ISPs



Security

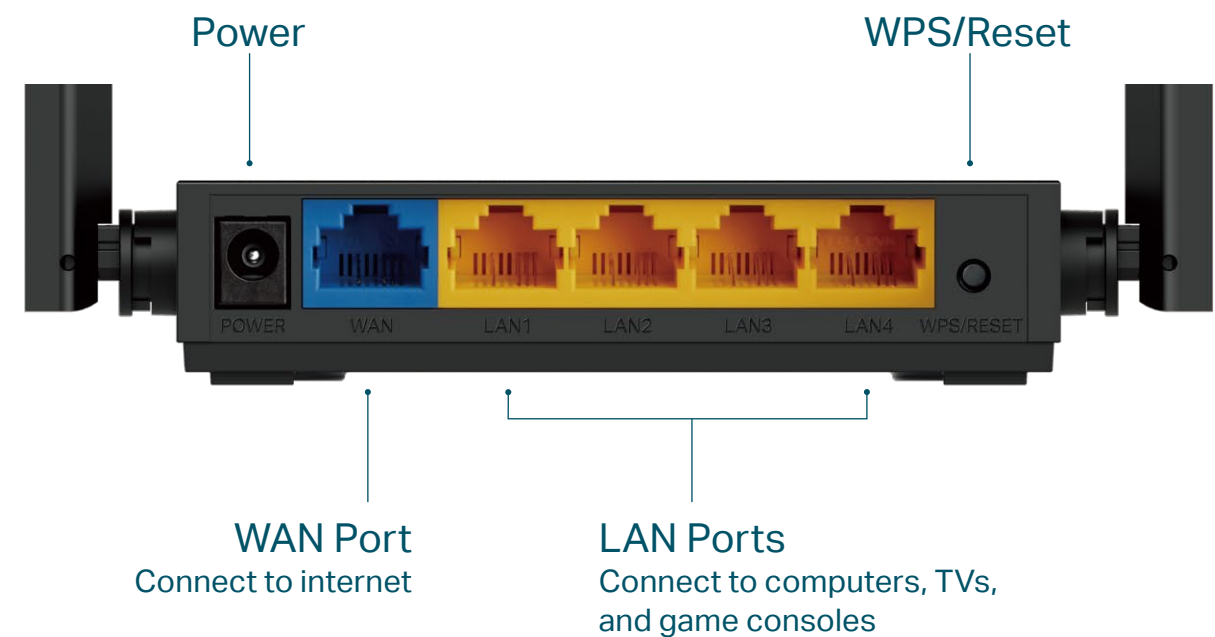
- Guest Network – Provide separate access for guests while securing the home network
- Access Control – Establish a whitelist or blacklist to allow or block certain devices from accessing the internet
- Parental Controls – Manage when and how connected devices can access the internet
- Encryptions for Secure Network – WPA-PSK/WPA2-PSK encryptions provide active protection against security threats



Specifications

Hardware

- Ethernet Ports: 4 x 10/100Mbps LAN Ports, 1 x 10/100Mbps WAN Port
- Buttons: Reset/WPS Button
- Antennas: 4 Fixed Omni Directional Antennas
- External Power Supply: 9VDC/0.85A
- Dimensions (W x D x H): 4.5x4.2x1.0 in. (115x106.7x24.3 mm)



Wireless

- Wireless Standards: IEEE 802.11ac/n/a 5GHz, IEEE 802.11b/g/n 2.4GHz
- Frequency: 2.4GHz and 5GHz
- Signal Rate:
 - 5 GHz: Up to 867 Mbps
 - 2.4 GHz: Up to 300 Mbps
- Reception Sensitivity:
 - 5GHz:
 - 11a 54M: -76dBm; 11ac VHT20 MCS8: -70dBm;
 - 11ac VHT40 MCS9: -65.5dBm; 11ac VHT80 MCS9: -61.5dBm
 - 2.4GHz:
 - 11g 54M: -76dBm; 11n HT20 MCS7: -74dBm;
 - 11n HT40 MCS7: -71dBm
- Wireless Function: Enable/Disable Wireless Radio, WMM
- Wireless Security: 64/128-bit WEP, WPA / WPA2, WPA-PSK / WPA2-PSK encryption

Specifications

Software

- Operation Modes: Wireless Router, Range Extender, Access Point
- WAN Type: Dynamic IP, Static IP, PPPoE, PPTP(Dual Access), L2TP(Dual Access)
- DHCP: DHCP Server, DHCP Client List, Address Reservation
- Quality of Service: WMM, Bandwidth Control
- NAT Forwarding: Port Forwarding, Port Triggering, UPnP, DMZ
- Dynamic DNS: DynDns, NO-IP
- Firewall Security: SPI Firewall, IP and MAC Address Binding
- Protocols: IPv4, IPv6
- Management: Parental Controls, Access Control, Local Management, Remote Management
- Guest Network: 2.4 GHz Guest Network, 5 GHz Guest Network

Others

- Certification
FCC, CE, RoHS
- Requirements
Microsoft Windows 10/8.1/8/7/Vista/XP/2000/NT/98SE, MAC OS, NetWare, UNIX or Linux
Internet Explorer 11, Firefox 12.0, Chrome 20.0, Safari 4.0, or other Java-enabled browser
Cable or DSL Modem
Subscription with an Internet Service Provider (for internet access)
- Environment
Operating Temperature: 0°C~40°C (32°F ~104°F)
Storage Temperature: -40°C~60°C (-40°F ~140°F)
Operating Humidity: 10%~90% non-condensing
Storage Humidity: 5%~90% non-condensing
- Package Contents
Wireless Router Archer C54
Power Adapter
RJ-45 Ethernet Cable
Quick Installation Guide



For more information, please visit

https://www.tp-link.com/products/details/?model=Archer+C54_V1

or scan the QR code left

Specifications are subject to change without notice. TP-Link is a registered trademark of TP-Link Technologies Co., Ltd. Other brands and product names are trademarks or registered trademarks of their respective holders. No part of the specifications may be reproduced in any form or by any means or used to make any derivative such as translation, transformation, or adaptation without permission from TP-Link Technologies Co., Ltd. Copyright ©2020 TP-Link Technologies Co., Ltd. All rights reserved.

*Maximum wireless signal rates are the physical rates derived from IEEE Standard 802.11 specifications. Actual wireless data throughput and wireless coverage are not guaranteed and will vary as a result of network conditions, client limitations, and environmental factors, including building materials, obstacles, volume and density of traffic, and client location.

www.tp-link.com

TP-Link AC1200 Dual Band Wi-Fi Router Archer C54

Ovaj dokument je originalno proizveden i objavljen od strane proizvođača, brenda TP-Link, i preuzet je sa njihove zvanične stranice. S obzirom na ovu činjenicu, Tehnoteka ističe da ne preuzima odgovornost za tačnost, celovitost ili pouzdanost informacija, podataka, mišljenja, saveta ili izjava sadržanih u ovom dokumentu.

Napominjemo da Tehnoteka nema ovlašćenje da izvrši bilo kakve izmene ili dopune na ovom dokumentu, stoga nismo odgovorni za eventualne greške, propuste ili netačnosti koje se mogu naći unutar njega. Tehnoteka ne odgovara za štetu nanесenu korisnicima pri upotrebi netačnih podataka. Ukoliko imate dodatna pitanja o proizvodu, ljubazno vas molimo da kontaktirate direktno proizvođača kako biste dobili sve detaljne informacije.

Za najnovije informacije o ceni, dostupnim akcijama i tehničkim karakteristikama proizvoda koji se pominje u ovom dokumentu, molimo posetite našu stranicu klikom na sledeći link:

<https://tehnoteka.rs/p/tp-link-ac1200-archer-c54-wifi-ruter-akcija-cena/>