

## Informacije o proizvodu (EN)

SAMSUNG The Premiere SP-LSP9TFAXXH projektor

**SAMSUNG**

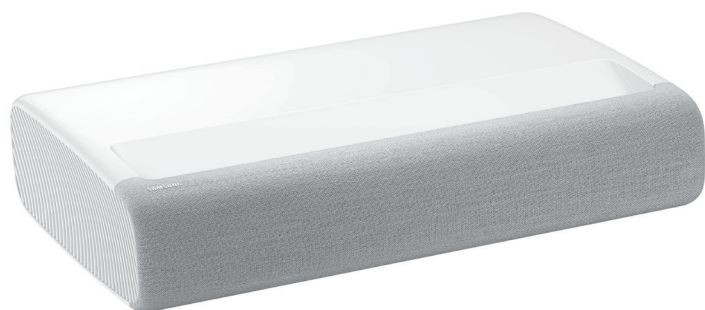


Tehnoteka je online destinacija za upoređivanje cena i karakteristika bele tehnike, potrošačke elektronike i IT uređaja kod trgovinskih lanaca i internet prodavnica u Srbiji. Naša stranica vam omogućava da istražite najnovije informacije, detaljne karakteristike i konkurentne cene proizvoda.

Posetite nas i uživajte u ekskluzivnom iskustvu pametne kupovine klikom na link:

<https://tehnoteka.rs/p/samsung-the-premiere-sp-lsp9tfaxxh-projektor-akcija-cena/>

# The Premiere (LSP9T)



## PRODUCT HIGHLIGHTS

- 4K UHD Ultra-Bright Triple Laser
- Smart TV Powered by Tizen
- Ultra-Short Throw and Compact Minimal Design
- Powerful 4.2 Channel Sound System
- Multiple Voice Assistants

## SIZE CLASS

100"-130"

Screen Size

Enjoy theater-like entertainment in your home with the best Samsung Ultra-Short Throw 4K triple-laser projector.

## KEY FEATURES

### Picture

- 4K UHD Ultra-Bright Triple Laser
- HDR10+ (HDR10 & HLG)
- UHD Processor
- PurColor®
- Game Enhancer
- Contrast:
  - 1,500:1 ANSI Contrast
  - 2,000,000:1 Full ON/OFF (Peak)
- 0.189 Throw Ratio
- 2800 ANSI Lumens

### Design

- Compact Minimal Design
- Ultra-Short Throw
- Premium Fabric from Kvadrat

### Smart Features

- Smart TV Powered by Tizen
- Universal Guide
- Multiple Voice Assistants
- TV Plus
- Samsung OneRemote
- Tap View

### Connections

- 3 HDMI Connections<sup>1</sup>
- USB Connection
- LAN Port
- 802.11AC built-in Wi-Fi
- Bluetooth®
- RS232 Control (Ex-Link)
- Optical Audio Output Port
- Digital Broadcasting, ATSC/ClearQAM
- 1 RF Input: Terrestrial broadcast (ATSC 1.0) or Cable (ClearQAM)
- Analog Tuner

### Audio

- Dolby® Digital Plus
- 40 Watt 4.2 Channel
- Samsung Acoustic Beam

### Included Accessories

- Samsung OneRemote

### Industry Certifications

- CTA 4K Ultra HD Connected
- HDR10+
- Filmmaker Mode

<sup>1</sup>HDMI—CEC (Consumer Electronics Control) facilitates convenient control functions with compatible devices.

**SAMSUNG**

SEE BACK FOR DETAILS

# The Premiere (LSP9T)

## KEY FEATURES (page 1 of 2)

### PICTURE

---

#### 4K UHD Ultra-Bright Triple Laser

Cutting-edge triple-laser technology and ultra-bright 4K resolution deliver heightened contrast and impeccable detail with 2800 lumens.

#### HDR10+

Unveils shades of color and detail you can't find on HDTV.

#### UHD Processor

A powerful processor optimizes the performance with 4K picture quality.

#### PurColor®

Experience colors that are fine-tuned to deliver a naturally beautiful picture.

#### Game Enhancer

The Premiere automatically adjusts settings to help games run smoothly.

#### HDR Formats Supported

HDR10 (Static MetaData), HDR10+ (Dynamic MetaData), HLG (Hybrid Log Gamma). All Samsung 4K UHD TVs also meet the CTA HDR-Compatible Definition.

### DESIGN

---

#### Ultra-Short Throw and Compact Minimal Design

The compact and minimal product design will seamlessly blend into your space.

#### Premium Fabric from Kvadrat

Premium fabric design engineered by Kvadrat and suitable for any interior.

### SMART FEATURES

---

#### Smart TV Powered by Tizen

Go beyond smart TV with next-gen apps, super-easy control and a host of enhancements that elevate the projector-watching experience.

#### Universal Guide

One simple on-screen guide organizes your streaming and live TV content, while also making recommendations.

#### Multiple Voice Assistants

Built-in Alexa, Google Assistant and Bixby voice assistants let you control The Premiere with your voice, get information and do so much more.

#### TV Plus

Enjoy your favorite content through virtual channels.

#### Mobile View

Easily send smartphone content to your TV to simultaneously display live and casted content, share photos or visualize music.

#### Samsung OneRemote

The sleek and slim OneRemote automatically detects and controls all compatible connected devices and content.

#### Tap View

Enjoy the same great features you expect from mirroring, like showing off videos, enlarging photos and video-calling family on the big screen, only with a different connection method for your Galaxy.

# The Premiere (LSP9T)

## KEY FEATURES (page 2 of 2)

### CONNECTIONS

---

#### HDMI

Enjoy higher-quality audio and video with an HDMI connection that transmits both signals over a single cable. Compatible with next-generation Ultra HD Blu-ray™ players and HDR content decoding.

#### Wi-Fi

Enjoy your favorite on-demand content seamlessly through your existing network with built-in Wi-Fi (802.11AC).

### AUDIO

---

#### Dolby® Digital Plus

Enjoy the ultimate digital sound quality on all of your favorite movies, TV shows and streaming content. Dolby Digital Plus optimizes your entertainment experience with enhanced sound richness and clarity.

#### Powerful 4.2 Channel Sound System

Elevate your home theater experience with powerful 4.2 channels and 40W speakers with built-in woofers.

#### Samsung Acoustic Beam

Delivers a panoramic audio experience with directional sound that makes it feel like you are part of the scene.

### INCLUDED ACCESSORIES

---

The Premiere Standard Smart Remote (TM-1850A)

### INDUSTRY CERTIFICATIONS

---

#### 4K Ultra HD Connected

All Samsung 2019 4K UHD and QLED televisions comply with the CTA 4K Ultra High-Definition Connected definition requirements. The trade organization known as the Consumer Technology Association (CTA™) is considered an industry authority on engineering standards for consumer electronics in the United States. Visit [www.cta.tech](http://www.cta.tech) for more information.

#### HDR10+

HDR10+ advances the current industry standard of High Dynamic Range (HDR) and HDR10 TV formats. As an upgraded version of HDR10, HDR10+ adds dynamic metadata to each frame. This optimal HDR data enables advanced chipsets from leading manufacturers to create a true-to-life picture across a wider range of displays.

#### Filmmaker Mode

Watch your movies and TV shows the way the filmmakers intended. This new picture mode preserves the director's creative intent and provides a cinematic experience.

# The Premiere (LSP9T)

## MODEL

**MODEL:** The Premiere (LSP9T)  
**ORDER CODE:** SP-LSP9TFAXZA

**UPC CODE:** 887276453569

**COUNTRY OF ORIGIN:** Taiwan

**DIMENSIONS (INCHES W x H x D):**

- **PROJECTOR:** 21.7 x 5 x 14.4
- **SHIPPING:** 26.6 x 10.1 x 18.9

**WEIGHT (LB):**

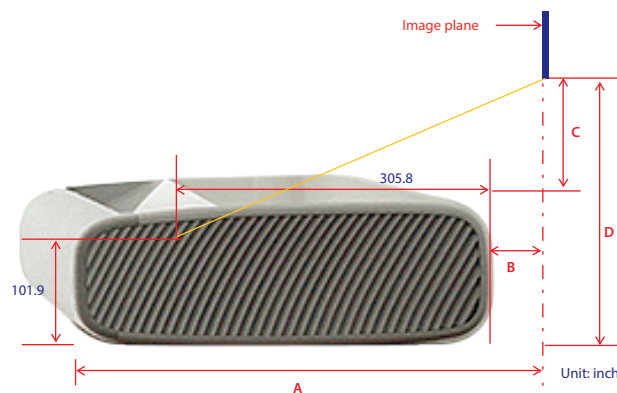
- **PROJECTOR:** 25.4
- **SHIPPING:** 33.1

**ACCESSORIES INCLUDED IN BOX:**

- **REMOTE MODEL:** TM-1850A

### SP-LSP9TFAXZA - Throw distance chart

	Image Size (diagonal, inch)	Image Width (inch)	Image Height (inch)	A (Image to front, inch)	B (Image to rear, inch)	C Offset (Image to top, inch) 120%	D Offset (Image to foot, inch) 120%
4K16:9 TR = 0.189 Offset=120%	90	78.4	44.1	17.2	2.8	7.4	12.8
	100	87.2	49.0	18.9	4.4	8.4	13.8
	110	95.9	53.9	20.6	6.1	9.4	14.8
	120	104.6	58.8	22.2	7.7	10.3	15.8
	130	113.3	63.7	23.8	9.4	11.3	16.8



Ovaj dokument je originalno proizveden i objavljen od strane proizvođača, brenda Samsung, i preuzet je sa njihove zvanične stranice. S obzirom na ovu činjenicu, Tehnoteka ističe da ne preuzima odgovornost za tačnost, celovitost ili pouzdanost informacija, podataka, mišljenja, saveta ili izjava sadržanih u ovom dokumentu.

Napominjemo da Tehnoteka nema ovlašćenje da izvrši bilo kakve izmene ili dopune na ovom dokumentu, stoga nismo odgovorni za eventualne greške, propuste ili netačnosti koje se mogu naći unutar njega. Tehnoteka ne odgovara za štetu nanесenu korisnicima pri upotrebi netačnih podataka. Ukoliko imate dodatna pitanja o proizvodu, ljubazno vas molimo da kontaktirate direktno proizvođača kako biste dobili sve detaljne informacije.

Za najnovije informacije o ceni, dostupnim akcijama i tehničkim karakteristikama proizvoda koji se pominje u ovom dokumentu, molimo posetite našu stranicu klikom na sledeći link:

<https://tehnoteka.rs/p/samsung-the-premiere-sp-lsp9tfaxxh-projektor-akcija-cena/>