

Quick Setup Guide

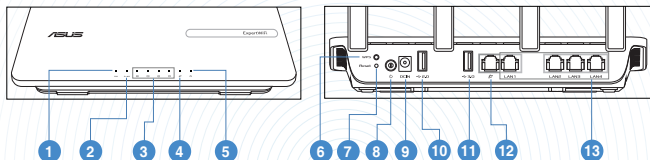
Wireless-AX3000 Dual-band Router

Enrutador de doble banda inalámbrico AX3000

ExpertWiFi EBR63

Router Overview

Descripción general del enrutador



1 5GHz LED / 5 GHz LED

2 2.4GHz LED / 2,4 GHz LED

3 LAN 1-4 LEDs / LED de LAN 1-4

4 WAN (Internet) LED / LED de WAN (Internet)

5 Power LED / LED de encendido

6 WPS button / Botón WPS

7 Reset button / Botón de reinicio

8 Power button / Botón de Energía

9 Power (DCIN) port /

Puerto de alimentación (DCIN)

10 USB 2.0 port / Puerto USB 2.0

11 USB 3.2 Gen 1x1 port / Puerto USB 3.2 Gen 1x1

12 WAN (Internet) port / Puerto WAN (Internet)

13 LAN 1-4 ports / Puertos LAN 1-4

* For detailed information, please refer to <https://asus.click/ExpertWiFiEBR63>



ASUS Recycling/Takeback Services

ASUS recycling and takeback programs come from our commitment to the highest standards for protecting our environment. We believe in providing solutions for you to be able to responsibly recycle our products, batteries, other components, as well as the packaging materials. Please go to <http://csr.asus.com/english/Takeback.htm> for the detailed recycling information in different regions.

REACH

Complying with the REACH (Registration, Evaluation, Authorisation, and Restriction of Chemicals) regulatory framework, we published the chemical substances in our products at ASUS REACH website at <http://csr.asus.com/english/REACH.htm>

Federal Communications Commission Statement

This device complies with Part 15 of the FCC Rules. Operation is subject to the following two conditions:

- This device may not cause harmful interference.
- This device must accept any interference received, including interference that may cause undesired operation.

This equipment has been tested and found to comply with the limits for a class B digital device, pursuant to part 15 of the FCC Rules. These limits are designed to provide reasonable protection against harmful interference in a residential installation.

This equipment generates, uses and can radiate radio frequency energy and, if not installed and used in accordance with the instructions, may cause harmful interference to radio communications. However, there is no guarantee that interference will not occur in a particular installation. If this equipment does cause harmful interference to radio or television reception, which can be determined by turning the equipment off and on, the user is encouraged to try to correct the interference by one or more of the following measures:

- Reorient or relocate the receiving antenna.
- Increase the separation between the equipment and receiver.
- Connect the equipment into an outlet on a circuit different from that to which the receiver is connected.
- Consult the dealer or an experienced radio/TV technician for help.

FCC RF Caution Statement:

WARNING: Any changes or modifications not expressly approved by the party responsible for compliance could void your authority to operate the equipment.

Prohibition of Co-location

This device and its antenna(s) must not be co-located or operating in conjunction with any other antenna or transmitter.

IMPORTANT NOTE:

Radiation Exposure Statement: This equipment complies with FCC radiation exposure limits set forth for an uncontrolled environment. End users must follow the specific operating instructions for satisfying RF exposure compliance. To maintain compliance with FCC exposure compliance requirement, please follow operation instruction as documented in this manual. This device is restricted for indoor use.



WARNING! This equipment must be installed and operated in accordance with provided instructions and the antenna(s) used for this transmitter must be installed to provide a separation distance of at least 20cm from all persons and must not be co-located or operating in conjunction with any other antenna or transmitter.

Compliance Statement of Innovation, Science and Economic Development Canada (ISED)

This device complies with Innovation, Science and Economic Development Canada licence exempt RSS standard(s). Operation is subject to the following two conditions: (1) this device may not cause interference, and (2) this device must accept any interference, including interference that may cause undesired operation of the device. Operation in the band 5150-5250 MHz is only for indoor use to reduce the potential for harmful interference to co-channel mobile satellite systems.

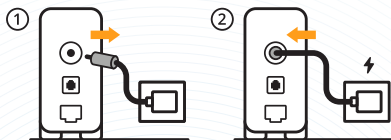
CAN ICES-003(B)/NMB-003(B)

1

Reboot modem and ensure its connection is ready Reiniciar el módem y asegurarse de que su conexión está lista

Notice: Unplug modem for 10 sec then plug back in

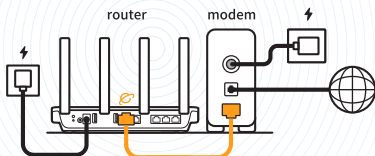
Aviso: Desenchufe el módem durante 10 segundos y vuelva a enchufarlo

**2**

Prepare your ASUS router and power it on Prepara tu enrutador ASUS y enciéndelo

Once the WAN LED turns ON, it is ready for set up.

Cuando el LED WAN se enciende, está listo para ser configurado.

**3**

Scan the code and download ASUS ExpertWiFi app for setup Escanea el código y descarga la aplicación ASUS ExpertWiFi para la instalación

For more information, please scan the code on the cover

Escanee el código de la portada para obtener más información

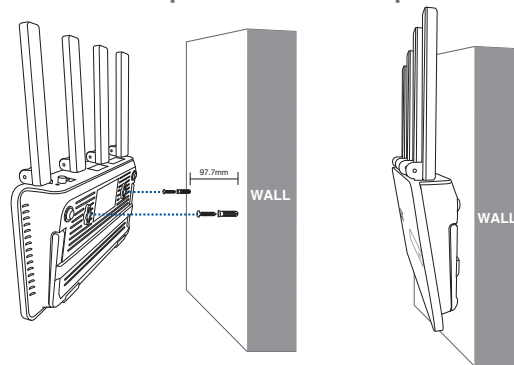


[Web] Open a web browser and navigate to <http://expertwifi.net> for web setup.

[Web] Abra un navegador web y navegue a <http://expertwifi.net> para la instalación de la web.

Wall-mount the ExpertWiFi EBR63

Monte el ExpertWiFi EBR63 en la pared



IMPORTANT! DO NOT install this equipment on the ceiling or mount it higher than 2 meters.

NOTE: It is recommended to use screws with a size of PA3.0*25mm.

¡IMPORTANTE! NO instale este equipo en el techo ni lo monte a más de 2 metros de altura.

NOTA: Se recomienda utilizar tornillos de tamaño PA3.0*25mm.