

Informacije o proizvodu (EN)

TP-LINK kamera za video nadzor Tapo C520WS



Tehnoteka je online destinacija za upoređivanje cena i karakteristika bele tehnike, potrošačke elektronike i IT uređaja kod trgovinskih lanaca i internet prodavnica u Srbiji. Naša stranica vam omogućava da istražite najnovije informacije, detaljne karakteristike i konkurentne cene proizvoda.

Posetite nas i uživajte u ekskluzivnom iskustvu pametne kupovine klikom na link:

<https://tehnoteka.rs/p/tp-link-kamera-za-video-nadzor-tapo-c520ws-akcija-cena/>

Outdoor Pan/Tilt Security Wi-Fi Camera

2K
QHD

Tapo C520WS

 Starlight Color Night Vision

Person/Pet/
Vehicle Detection

Smart Motion
Tracking

Local microSD Storage
(Up to 512 GB)*



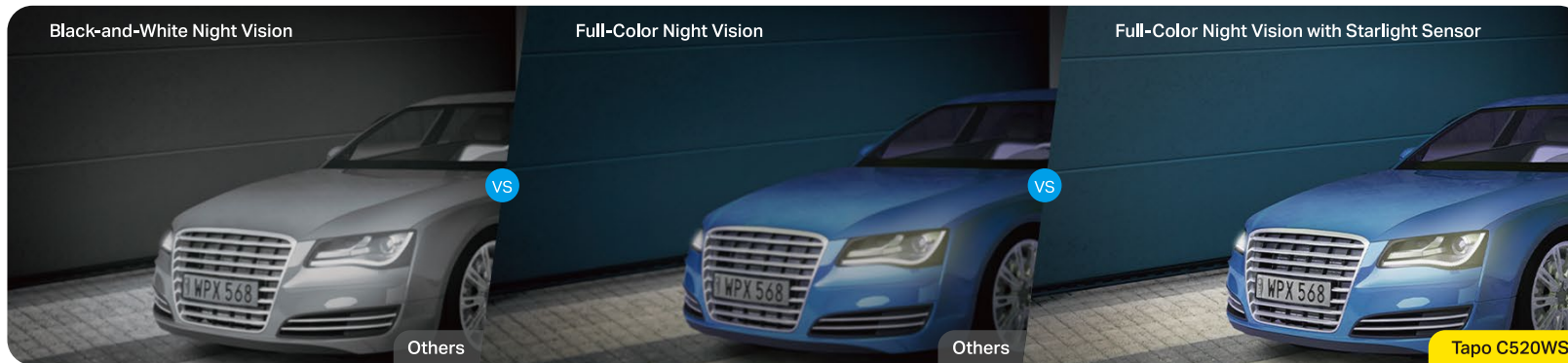
works with | 

works with | 

// Highlights

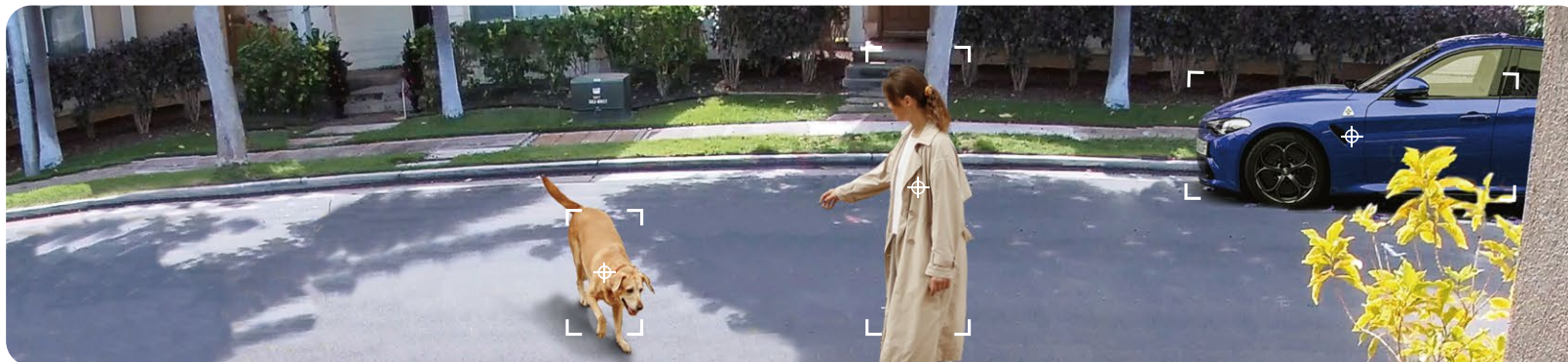
2K QHD, Starlight Color Night Vision

Equipped with an F1.6 large-aperture lens and starlight sensor, Tapo C520WS enhances your security by revealing highly-detailed and bright-color images even under low-light conditions.



Person/Pet/Vehicle Detection and Notification

Smart AI identifies people, pets, and vehicles, notifying users as needed.



// Features

360° Visual Coverage

Provides 360° horizontal & 130° vertical view (180° vertical view in Privacy Mode) range to capture everything around.

IP66 Weatherproof

Offers excellent waterproof and dustproof performance for outdoor scenarios.

Local[†] and Cloud[‡] Storage

Save recorded videos to an installed microSD card (up to 512 GB), or use Tapo Care cloud storage service.

Multiple Installation Options

Use the mounting screws, template and loops[‡] to install on any wall, ceiling or pole for the perfect view—wherever you want.

Two-Way Audio

Enables communication through a built-in microphone and speaker.

Dual Powerful Antennas

Two external antennas ensure a powerful and stable wireless connection.

Wired/Wireless Networking

Connect the camera to your network through Ethernet or Wi-Fi for more flexible installation.

Customizable Sound and Light Alarm

Records your customized audio as an alarm to extend your usage. Set to trigger a light/sound alarm when detecting activity.

// Specifications

Camera

- Image Sensor: 1/3" CMOS
- Lens: F/NO: 1.61±10%; Focal Length: 3.18mm±5%
- Video Definition: 2K QHD 4MP (2560 × 1440 px)
- Field of View: 360° Horizontal
- Night Vision: 850 nm IR LED (up to 98 ft), Starlight Color Night Vision

Audio

- Audio Communication: 2-way audio
- Audio Input & Output: Built-in microphone and speaker

Video

- Video Compression: H.264
- Frame Rate: Up to 25/30fps*
- Video Streaming: 2K

Activity Notifications

- Input Trigger:
Motion detection, Person detection, Pet detection, Vehicle detection, Line-Crossing detection
- Output Notification: Notification, Snapshot(Tapo care), Clips(Tapo care)

Network

- Wireless Protocols: IEEE 802.11b/g/n, 2.4 GHz
- Frequency: 2.4 GHz
- Wireless Security: WPA/WPA2-PSK
- Security: 128 bit AES encryption with SSL/TLS
- Protocol: TCP/IP, ICMP, DNS, HTTPS, TCP, UDP

// Specifications

Hardware

- Button: RESET button
- Indicator LED: System LED
- Adapter Input: 100-240V, 50/60Hz
- Adapter Output: 9V, 0.85A (DC Power)
- Typical Power Consumption: 3.75 W
- Maximum Power Consumption: 7.65 W
- External Storage: microSD card slot (Supports up to 512 GB)[†]
- Dimensions (W x D x H): 4.9 x 4.8 x 3.5 in. (123.8 x 123 x 90 mm)
- Weatherproof Rating: IP66
- Power Cord Length: 3 m

^{*}Frame rate varies at different frequencies. Frame Rate is up to 25fps at 50Hz and 30fps at 60Hz.

[†]microSD card needs to be purchased separately.

^{††}Tapo Care needs to be subscribed separately.

For more information, please visit <https://www.tapo.com/>

All brands and product names are trademarks or registered trademarks of their respective holders. Specifications are subject to change without notice.

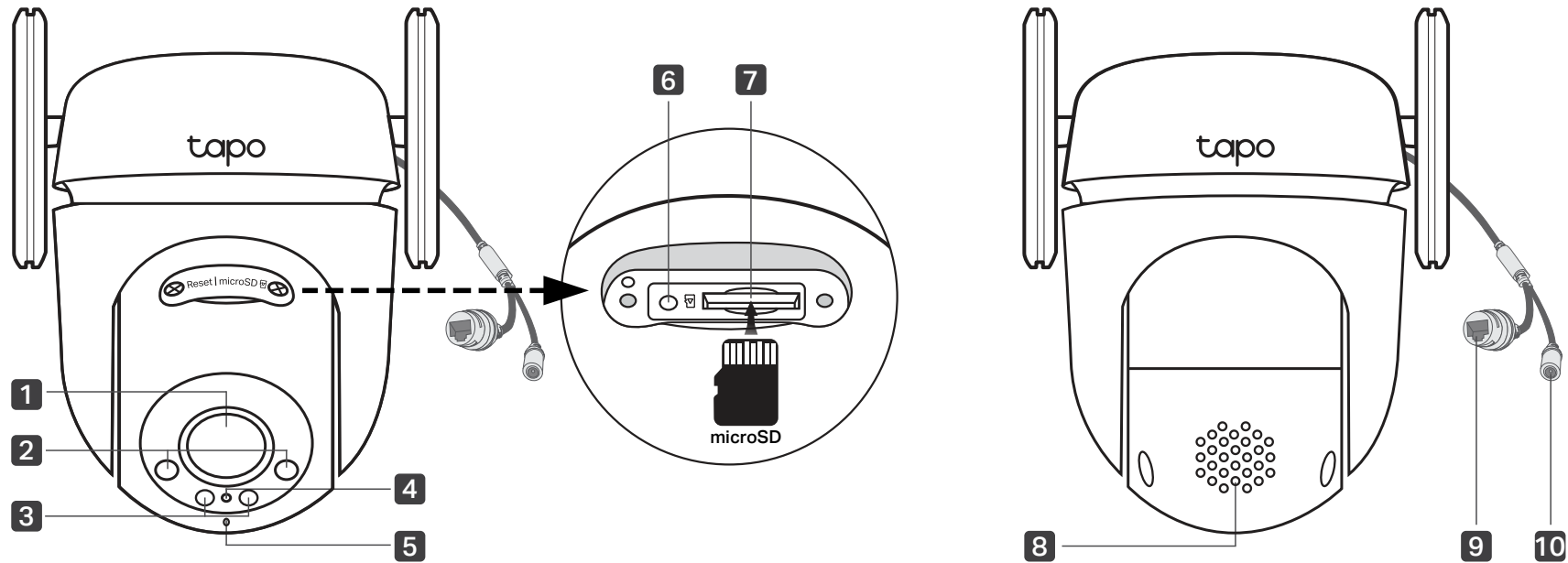
©2023 TP-Link

Others

- Certification: CE, FCC, RoHS, RCM
- Package Contents:

Tapo C520WS Camera ×1	Bracket Screws × 2
Power Adapter ×1	Waterproof Seal ×1
Mounting Template ×1	Waterproof Cable Attachments ×1
Mounting Bracket ×1	Quick Start Guide
Mounting Anchors ×4	
Mounting Screws ×4	
- Operating Temperature: -30 °C ~ 60 °C (-22 °F ~ 140 °F)
- Storage Temperature: -40 °C ~ 60 °C (-40 °F ~ 140 °F)
- Operating Humidity: 10%~90%RH, Non-condensing
- Storage Humidity: 0~90%RH, Non-condensing

// Appearance



1 Lens

2 White Light LEDs

3 IR LEDs

4 System LED

5 Microphone

6 Reset

Loosen the screws. While the camera is powered on, use a pin to press and hold the Reset button for at least 5 seconds until the System LED blinks red. The camera will reset and reboot.

7 microSD Card Slot

Loosen the screws and insert a microSD card*. Initialize it on the Tapo app for local recording.

*microSD card not included

8 Speaker

9 Ethernet Port

Used to connect to a network device

10 DC Power Connector

Used to connect to a 9V DC power adapter

Ovaj dokument je originalno proizveden i objavljen od strane proizvođača, brenda TP-Link, i preuzet je sa njihove zvanične stranice. S obzirom na ovu činjenicu, Tehnoteka ističe da ne preuzima odgovornost za tačnost, celovitost ili pouzdanost informacija, podataka, mišljenja, saveta ili izjava sadržanih u ovom dokumentu.

Napominjemo da Tehnoteka nema ovlašćenje da izvrši bilo kakve izmene ili dopune na ovom dokumentu, stoga nismo odgovorni za eventualne greške, propuste ili netačnosti koje se mogu naći unutar njega. Tehnoteka ne odgovara za štetu nanесenu korisnicima pri upotrebi netačnih podataka. Ukoliko imate dodatna pitanja o proizvodu, ljubazno vas molimo da kontaktirate direktno proizvođača kako biste dobili sve detaljne informacije.

Za najnovije informacije o ceni, dostupnim akcijama i tehničkim karakteristikama proizvoda koji se pominje u ovom dokumentu, molimo posetite našu stranicu klikom na sledeći link:

<https://tehnoteka.rs/p/tp-link-kamera-za-video-nadzor-tapo-c520ws-akcija-cena/>