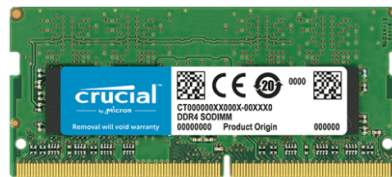


## Uputstvo za upotrebu (EN)

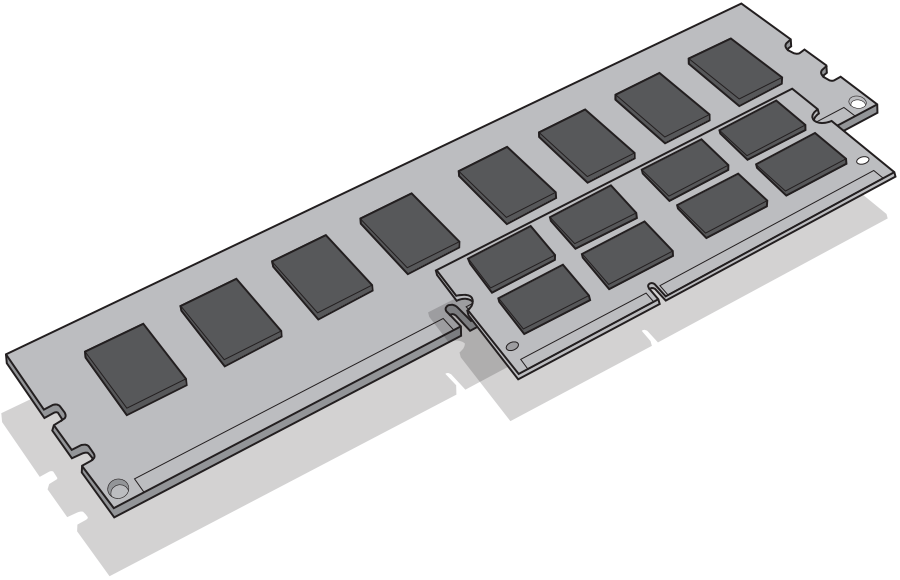
CRUCIAL 4GB DDR4 2666MHz CT4G4SFS8266



Tehnoteka je online destinacija za upoređivanje cena i karakteristika bele tehnike, potrošačke elektronike i IT uređaja kod trgovinskih lanaca i internet prodavnica u Srbiji. Naša stranica vam omogućava da istražite najnovije informacije, detaljne karakteristike i konkurentne cene proizvoda.

Posetite nas i uživajte u ekskluzivnom iskustvu pametne kupovine klikom na link:

<https://tehnoteka.rs/p/crucial-4gb-ddr4-2666mhz-ct4g4sfs8266-akcija-cena/>



# Install Guide

## Memory Module Installation

### Equipment needed

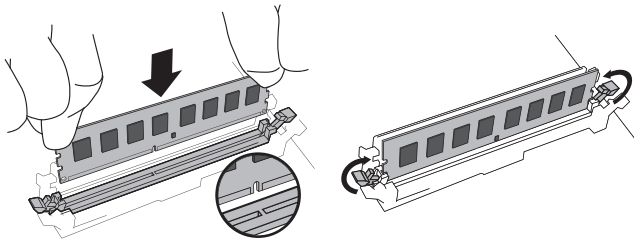
- Memory module(s)
- Non-magnetic-tip screwdriver (for removing the cover on your computer)
- Your system's owner's manual

### Installation process

1. Make sure that you are working in a static-safe environment. Remove any plastic bags or papers from your work space.
2. Shut down your system and make sure the power is completely off before unplugging the power cable from your computer. For laptops, then remove the battery.
3. Hold the power button for 3-5 seconds to discharge residual electricity.
4. Remove your computer's cover. Refer to your owner's manual for how to do this.

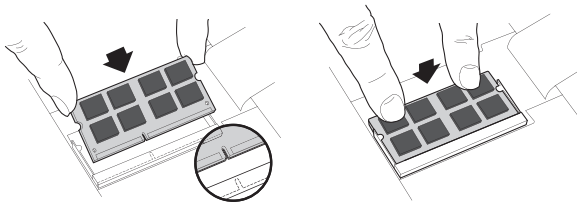
5. To protect your new memory modules and your system's components from static damage during the installation process, touch any of the unpainted metal surfaces on your computer's frame before handling and installing memory.
6. Using your system's owner's manual, locate your computer's memory expansion slots. Do not use any tools in the removal or installation of memory modules.
7. Insert your new memory module(s) in accordance with the illustrations in this guide. Align the notch(es) on the module with the notch(es) in the slot, and then press the module down until the clips on the slot snap into place. (It can take 20 to 30 pounds of pressure to install a module.) Fill the memory slots on your computer starting with the highest density (i.e. put the highest density module in bank 0).
8. Once the module(s) have been installed, replace the cover on your computer and reconnect the power cord or battery. Installation is now complete.

### DIMM installation



Using firm, even pressure, push DIMM into slot until clips snap into place. Do not assist clips.

### SODIMM installation



Firmly push the SODIMM in at a 45-degree angle, and then push down until clips snap into place. When it is fully seated in the slot, one-sixteenth of an inch or less of the gold pins will be visible.

## Helpful hints & troubleshooting tips

### If your system does not boot, check the following:

1. If you receive an error message or hear a series of beeps, your system may not be recognizing the new memory. Remove and reinstall the modules to ensure they are securely seated in the slots.
2. If your system won't boot, check all of the connections inside your computer. It is easy to bump a cable and pull it out of its connector, disabling devices such as your hard drive or CD-ROM. If your system still won't reboot, contact Crucial Technical Support.
3. When restarting your system, you may get a message prompting you to update the configuration settings. Refer to your owner's manual for information. If you are still unsure, please call Crucial Technical Support for assistance.
4. If you get a memory mismatch message, follow the prompts to enter the Setup menu, and then select Save and Exit. (This is not an error—some systems must do this to update the system settings.)

**If you have any issues with installation, contact Crucial support with any questions or concerns.**

## Helpful Memory Support Resources

### North and South America

<http://www.crucial.com/usa/en/support-memory>

### Europe

#### United Kingdom:

<http://uk.crucial.com/gbr/en/support-memory>

#### European Union:

<http://eu.crucial.com/eur/en/support-memory>

#### France:

<http://www.crucial.fr/fra/fr/aide-memoire>

#### Italy:

<http://it.crucial.com/ita/it/assistenza-memoria-ram>

#### Germany:

<http://www.crucial.de/deu/de/support-memory>

### Asia Pacific

#### Australia/New Zealand:

<http://www.crucial.com/usa/en/support-memory>

#### China:

<http://www.crucial.cn/安装指南>

#### Japan:

<http://www.crucial.jp/jpn/ja/support-memory>

## [www.crucial.com/support/memory](http://www.crucial.com/support/memory)

©2017 Micron Technology, Inc. All rights reserved. Information, products, and/or specifications are subject to change without notice. Neither Crucial nor Micron Technology, Inc. is responsible for omissions or errors in typography or photography. Micron, the Micron logo, Crucial, the Crucial logo, and The memory & storage experts are trademarks or registered trademarks of Micron Technology, Inc. All other trademarks are the property of their respective owners.

Ovaj dokument je originalno proizveden i objavljen od strane proizvođača, brenda Crucial, i preuzet je sa njihove zvanične stranice. S obzirom na ovu činjenicu, Tehnoteka ističe da ne preuzima odgovornost za tačnost, celovitost ili pouzdanost informacija, podataka, mišljenja, saveta ili izjava sadržanih u ovom dokumentu.

Napominjemo da Tehnoteka nema ovlašćenje da izvrši bilo kakve izmene ili dopune na ovom dokumentu, stoga nismo odgovorni za eventualne greške, propuste ili netačnosti koje se mogu naći unutar njega. Tehnoteka ne odgovara za štetu nanесenu korisnicima pri upotrebi netačnih podataka. Ukoliko imate dodatna pitanja o proizvodu, ljubazno vas molimo da kontaktirate direktno proizvođača kako biste dobili sve detaljne informacije.

Za najnovije informacije o ceni, dostupnim akcijama i tehničkim karakteristikama proizvoda koji se pominje u ovom dokumentu, molimo posetite našu stranicu klikom na sledeći link:

<https://tehnoteka.rs/p/crucial-4gb-ddr4-2666mhz-ct4g4sfs8266-akcija-cena/>