

Uputstvo za upotrebu

AENO kuvalo za vodu EK2

A E N O



Tehnoteka je online destinacija za upoređivanje cena i karakteristika bele tehnike, potrošačke elektronike i IT uređaja kod trgovinskih lanaca i internet prodavnica u Srbiji. Naša stranica vam omogućava da istražite najnovije informacije, detaljne karakteristike i konkurentne cene proizvoda.

Posetite nas i uživajte u ekskluzivnom iskustvu pametne kupovine klikom na link:

<https://tehnoteka.rs/p/aeno-kuvalo-za-vodu-ek2-akcija-cena/>

A E N O



**Installation and Operation Manual for electric kettle
AENO EK2**

(Model: AEK0002)

v. 1.0.1 | April 2022

Contents

| | |
|--|----|
| Introduction..... | 5 |
| Copyright..... | 5 |
| Responsibility and technical support | 6 |
| Standards compliance | 7 |
| Warnings and restrictions | 9 |
| 1 General description and technical data | 12 |
| 1.1 Description and purpose of the device..... | 12 |
| 1.2 Specifications..... | 15 |
| 1.3 Package Contents..... | 16 |
| 1.4 Packaging and labelling | 17 |
| 2 Installation and operation..... | 18 |
| 2.1 Preparation for use..... | 18 |
| 2.2 Boiling water | 20 |
| 3 Maintenance and repairs..... | 22 |
| 3.1 Cleaning the device body and stand..... | 22 |
| 3.2 Cleaning the inside of the device | 23 |
| 4 Warranty obligations | 25 |
| 4.1 AENO™ service centres | 25 |
| 4.2 Warranty service procedure..... | 26 |
| 4.3 Limitation of liability..... | 26 |
| 5 Storage, transportation and disposal..... | 28 |
| 6 Other information..... | 30 |
| 7 Troubleshooting..... | 32 |
| 8 Glossary | 34 |

Figures and tables

| | |
|---|----|
| Figure 1 – Side view..... | 12 |
| Figure 2 – Top view..... | 13 |
| Figure 3 – Elements of the device | 14 |

| | |
|---|----|
| Figure 4– Delivery set..... | 17 |
| Figure 5 – Examples of device installation..... | 18 |
| Figure 6 – Water level marks..... | 19 |
| Figure 7 – The process of filling the kettle and boiling water..... | 21 |
| Figure 8 – Cleaning the device body..... | 23 |
| | |
| Table 1 – Main technical specifications..... | 15 |
| Table 2 – Descaling agents and cleaning methods | 24 |
| Table 3 – Typical problems and solutions..... | 32 |

Introduction

This manual contains a detailed description of the AENO EK2 electric kettle, as well as operating and maintenance instructions.

Copyright

Copyright © ASBISc Enterprises PLC. All rights reserved.

The AENO™ trademark belongs to ASBISc Enterprises PLC (hereinafter "ASBISc").

All trademarks, trade names, logos and other symbols mentioned herein are the property of their respective owners*.

The material presented under the name AENO™ and contained in this manual is protected under international and local laws, including copyright and other related rights laws.

Any references to names of other companies, brands and equipment in this document are for the sole purpose of explanation and description of the devices and do not violate anyone's intellectual property rights.

Any reproduction, copying, publication, further distribution or public display of materials presented herein (in whole or in part) is only permitted after appropriate written permission from the copyright holder.

Any unauthorized use of this manual materials may subject the user to civil liability and criminal prosecution under applicable law.

* **Strix** is a trademark of Strix Group Plc.

Responsibility and technical support

This document has been prepared in accordance with all necessary legal requirements and contains detailed, complete and comprehensible operation and maintenance information. The information is current as of the date indicated in the document. Strict adherence to the instructions in this manual is a basic requirement for the correct, safe and reliable operation of the device.

This manual as well as the quick start guide are an integral part of the device and should always be available to the user as reference documentation.

ASBISc reserves the right to modify the device and to make edits and changes to this document without prior notice to users and shall not be liable for possible negative consequences resulting from the use of an outdated version of the document or for any possible technical or typographical errors or omissions or incidental or consequential damages that may arise from the transmission of this document or the use of devices.

In the event of discrepancies in the language versions of the document, the Russian version of this manual shall take precedence.

ASBISc makes no warranties with respect to the material herein, including but not limited to merchantability and suitability for a particular purpose.

If you have any technical questions, please contact your local ASBISc representative or Technical Support department at **aeno.com**. The most frequently encountered problems are described in Section 7 "Troubleshooting" of this document.

You can download the latest version of this manual at **aeno.com/documents**.

User information, including personal data, is protected from unauthorized access and disclosure in accordance with GDPR requirements. You can read the Privacy Policy at **aeno.com/privacy-policy**.

Standards compliance



The device is CE certified and meets the requirements of the following European Union legislation:

- Electromagnetic Compatibility Directive 2014/30/EU;
- Low Voltage Directive 2014/35/EU;
- Directive 2009/125/EU on ecodesign requirements for energy-related products;
- Regulation (EC) No.1907/2006 concerning the Registration, Evaluation, Authorization and Authorisation of Chemicals (REACH).



The device complies with the UKCA labelling requirements necessary to sell the device in the United Kingdom.



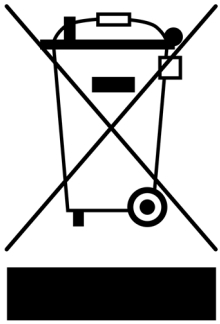
The device has passed all assessment procedures established in the technical regulations of the Customs Union and complies with the norms of the Customs Union countries.



The device complies with the Restriction of Hazardous Substances (RoHS) in Electronic and Electrical Equipment Directive (Directive 2015/863/EU, 2011/65/EU).



National Mark of Conformity of Ukraine, indicating that the device meets all required technical regulations.



The crossed out dustbin symbol is used to mark electrical and electronic equipment and indicates separate collection.

The symbol is given in accordance with the Waste Electrical and Electronic Equipment (WEEE)* Directive 2012/19/EU and indicates that this equipment requires separate collection at the end of its service life and must be disposed of separately from unsorted municipal waste.

To protect the environment and human health, dispose of used electrical and electronic equipment according to approved safe disposal guidelines.

| | | | | | | | | | | | | |
|--|----|----|----|----|----|----|----|----|----|----|----|----|
| | AR | BG | CS | DE | EN | ES | ET | FR | HR | HU | HY | IT |
| | KA | KK | LT | LV | PL | RO | RU | SK | SR | UK | UZ | ZH |

* See Section 8 "Glossary" for an explanation.

Warnings and restrictions

Before using the device, carefully read the information contained in this section of the document.

WARNING! The warnings, precautions, and instructions in this document cannot cover all possible hazards. Use common sense when using the device.

The device is designed for:

- adults;
- children under the supervision of persons responsible for their safety;
- people with disabilities who are physically able to operate and maintain the device in accordance with this user manual.

The device should be operated only in a domestic environment and in the manner described in this user manual. The device cannot be used outdoors. Failure to follow the operating instructions in this manual may result in personal injury or property damage.

1. The device is designed for use in the home, office and similar environments. Do not use it in an industrial environment.
2. The device is intended only for heating and boiling water.
3. Place the device on a dry, level, and stable horizontal surface.
4. Do not install the device on a gas or electric stove, or near external heat sources (open fire, hot surfaces, heating devices) or near other electrical appliances. Protect from direct sunlight and other potential heat sources.
5. Do not use the device in areas with extreme temperature fluctuations, in a humid atmosphere, or where the device or its stand may be splashed with water, dripping or condensation, to avoid fire and/or electric shock.
6. Before using for the first time, make sure that the rated voltage indicated in the technical documentation corresponds to the parameters of the mains supply.
7. Connect only to a grounded power outlet. Do not use an extension cord.
8. Plug the power cord into and unplug it from the outlet only with dry hands.
9. Place the power cord so that it cannot be accidentally stepped on or caught on.

10. Do not place anything on top of the power cord or allow it to come into contact with sharp edges or hot surfaces.
11. Make sure that the power cord does not hang over the edges of furniture or touch surfaces that could damage the insulation.
12. Do not wrap the power cord around the device.
13. If the power cord is damaged, first power off the outlet, then unplug the device. The power cord should only be replaced by a service technician.
14. Do not leave the switched on device unattended.
15. Do not turn on the electric kettle without water or with an insufficient amount of water (below the "MIN" mark on the inside of the body). In this case the device will switch off before the water boils.
16. Do not pour water above the "MAX" mark on the inside of the body.
17. Do not turn on the kettle with the lid open.
18. Do not move the device while it is operating.
19. Do not open the kettle while the water is heating or during the first few minutes after boiling.
20. Make sure that the lid is tightly closed before lifting the device. Do not touch the hot body of the device with your hands, lift the device from the stand by the handle only.
21. Be careful when pouring hot water, do not tilt the kettle with water too sharply.
22. Use the device only with the supplied stand.
23. Do not immerse the kettle, the stand with electrical contacts, the power cord or the power cord plug in water or other liquids. Do not allow condensation to form on them.
24. If the device has fallen into water, do not touch it under any circumstances and disconnect it from the power supply immediately.
25. Never use the device or stand that has been immersed in water. Have them checked by an authorized service centre.
26. If you notice malfunction or damage, stop using the device immediately and contact a service centre.
27. The device should only be repaired by a qualified service technician. Never try to repair the device yourself.
28. Do not make any modifications to the device or accessories. Use it only with original and manufacturer-recommended accessories, consumables and/or replacement parts.
29. Disconnect the device from the power supply when you finish using it and before cleaning it.

30. Remove limescale in a timely manner and clean the inside and outside of the device (see section 3).
31. Do not allow children to use the device without adult supervision and/or play with it.

Warning symbols and icons

Class I * protection from electric shock.

* See Section 8 "Glossary" for an explanation.

1 General description and technical data

1.1 Description and purpose of the device

Electric kettle AENO EK2 is designed for heating and boiling drinking water. The kettle is suitable for everyday use at home, in the office and other similar environments.

The flask of the device has no seams and is made of impact-resistant stainless steel SUS 304, resistant to acids. The body is made of heat-resistant plastic. The gap between the walls of the device keeps the water temperature longer and prevents the outer surfaces of the device from heating.

The Strix * contact group ensures maximum safety when using the device. The kettle switches off automatically if the heating element overheats and if the device is removed from the stand before the water boils. Also, the design of the contact group allows you to rotate the kettle on a stand 360°.



Figure 1 – Side view

* See Section 8 "Glossary" for an explanation.



Figure 2 – Top view

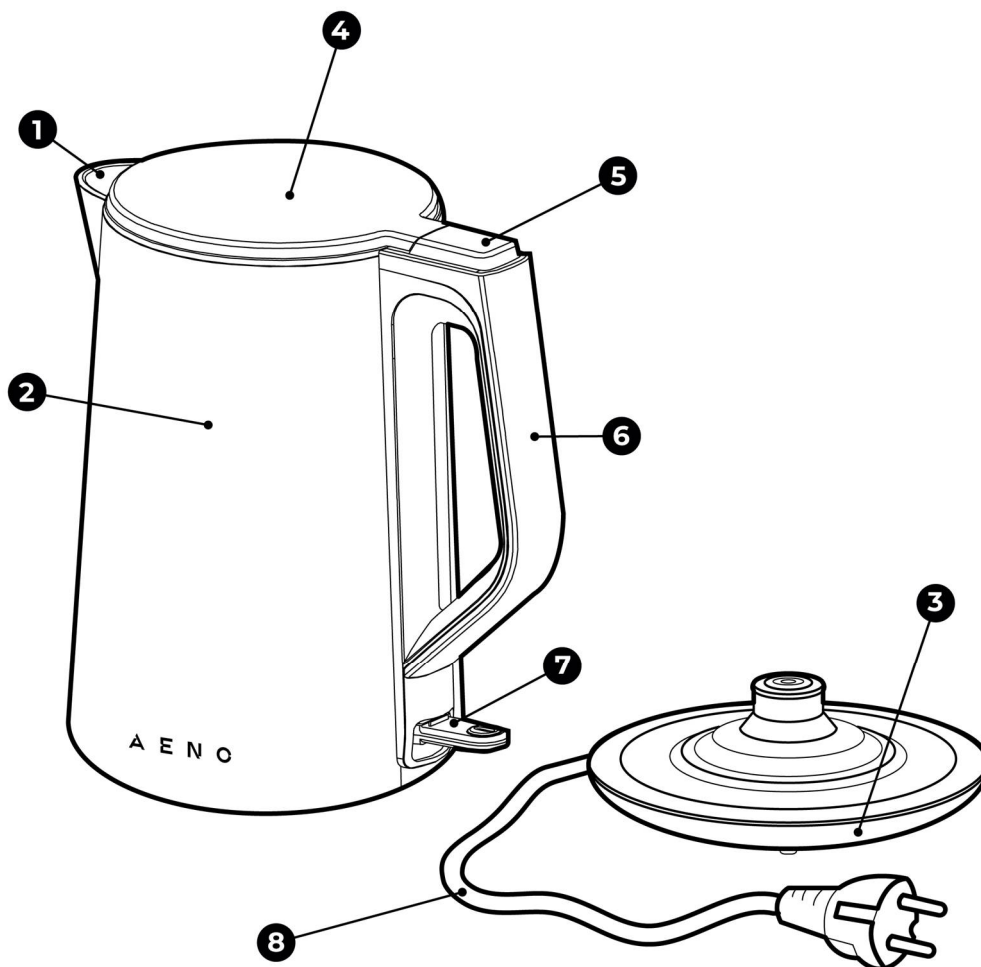


Figure 3 – Elements of the device

Elements of the device (see Figure 3):

- 1** – spout
- 2** – body
- 3** – stand
- 4** – lid
- 5** – lid open button
- 6** – handle
- 7** – switch with light indicator
- 8** – power cord

1.2 Specifications

Table 1 – Main technical specifications

| Parameter | Value |
|-----------------------------------|--|
| Model | AEK0002 |
| Product ID | EK2 |
| Power: | 1850.0–2200.0 W |
| Voltage: | 220–240 V (AC) |
| Frequency | 50–60 Hz |
| Heating element | Hidden spiral |
| Protection against electric shock | Class I |
| Volume | 1.5 L |
| Control | Manual |
| Connecting to the power grid | Through the stand |
| Heating to boiling point | About 6 minutes (depending on water volume) |
| Functional features | Automatic shutdown when water boils. Automatic shutdown if there is lack or insufficient amount of water. Protection against overheating. Operation indicator |
| Rotation on stand | 360° |
| Kettle connector | Strix |
| Power cord length | 0.75 m |
| Operating conditions | Temperature: +5 to +40 °C Relative humidity: 30–80 % (no condensation) |

| Parameter | Value |
|--------------------|--|
| Storage conditions | Temperature: 0 to +45 °C Relative humidity: 0–80% (no condensation) |
| Installation | On a stand on a horizontal, level surface |
| Flask material | Stainless steel |
| Body material | Polypropylene (PP) * |
| Colour | White |
| Size (L×W×H) | 230.5 ×160×251 mm |
| Weight | Net: 1.05 kg Gross: 1.33 kg |
| Warranty period | 2 years |
| Service life | 2 years |
| Certificates | CE, EAC, RoHS, UA.TR, UKCA |

* See Section 8 "Glossary" for an explanation.

1.3 Package Contents

The AENO EK2 electric kettle package includes:

1. Electric kettle – 1 pc.
2. Stand – 1 pc.
3. Quick Start Guide – 1 pc.
4. Warranty card – 1 pc.



Figure 4– Delivery set *

1.4 Packaging and labelling

The device is supplied in an individual cardboard package measuring 220×204×248 mm, containing the full name, labelling and main technical specifications, as well as the date of manufacture and the manufacturer's details.

* The images of accessories are for illustrative purposes only.

2 Installation and operation

2.1 Preparation for use

Before using the device for the first time, please carefully read and understand this user manual.

Device mounting is not required.

WARNING! When connecting, operating and storing the AENO™ electric kettle, follow the safe use rules (see "Warnings and restrictions").

To ensure proper operation of the AENO EK2 electric kettle, the next steps must be followed before first use:

- Carefully open the package and remove the device and accessories.
- Place the stand in the chosen location on a flat, stable, horizontal surface (see Figure 5).



Figure 5 – Examples of device installation *

* The images are for illustrative purposes only.

NOTE. Before connecting the device to the power supply for the first time, make sure that the rated voltage indicated in the technical documentation corresponds to the electrical voltage in the outlet.

- Fill the kettle with water up to the "MAX" mark. Boil (see section 2.2) and drain the water.

NOTE. Water level marks are located on the inner surface of the device.

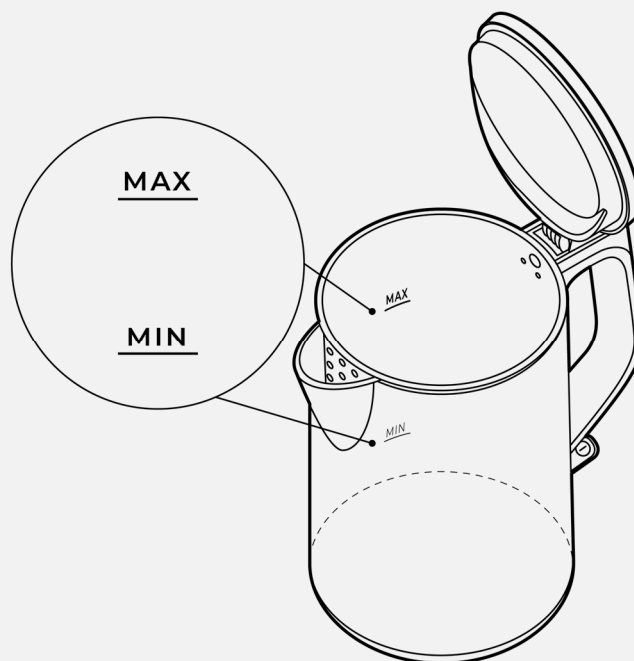


Figure 6 – Water level marks

Do not pour water into the kettle below the "MIN" mark and above the "MAX" mark.

- Repeat the procedure.
- Allow the device to cool down.
- Wipe the exterior and interior of the device with a dry cloth. Make sure there is no moisture left on the stand and the kettle.

WARNING! Use only the supplied stand to connect the device to the power supply. Use of other stands may result in damage to the device.

2.2 Boiling water

In order to boil water in the electric kettle, the next steps must be followed in sequence:

1. Remove the kettle from the stand.
2. Press the button on the handle of the device and open the lid.
3. Draw just the right amount of water.
4. Close the lid tightly.
5. Place the kettle on the stand.
6. Insert the plug of the power cord into the power outlet
7. Lower the switch. The indicator will light up and the water heating process will start.
8. After the water boils, make sure that the switch automatically returns to its previous position and the light goes out.

NOTE. To interrupt the heating or boiling process, raise the switch or remove the kettle from the stand. The indicator light will turn off.

9. Remove the kettle from the stand and carefully pour water from it.

WARNING! When pouring hot water from the kettle, the lid must be closed. Do not tilt the device harshly.

NOTE. Allow the device to cool down for at least 30 seconds before boiling water again.

10. Be sure to remove the power cord plug from the power outlet when you are finished using the device.

The whole process of filling the kettle and boiling water is shown in Figure 7.

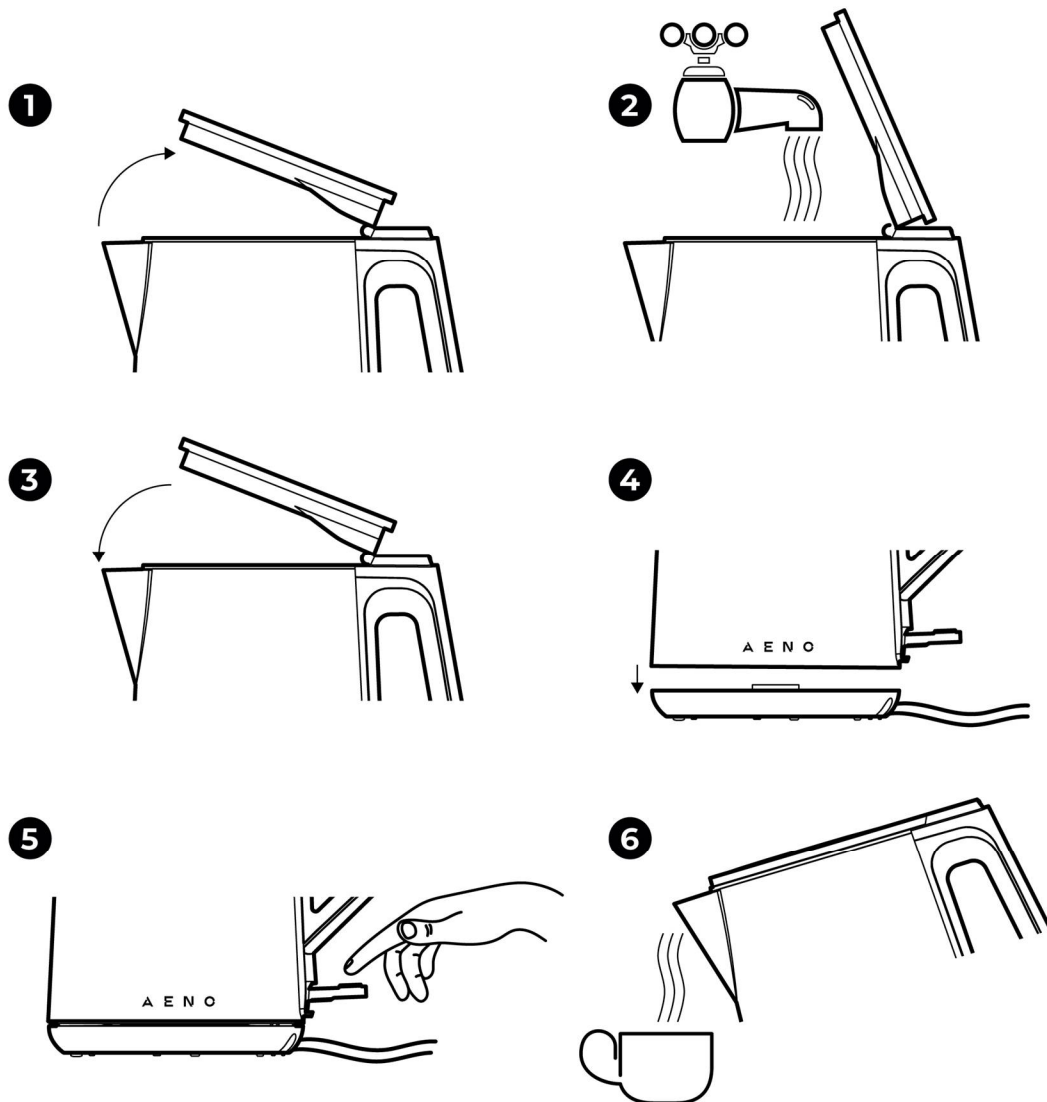


Figure 7 – The process of filling the kettle and boiling water

WARNING! If you turn on the kettle without water or with insufficient amount of water, it will turn off automatically. Wait until the device has cooled down before filling and turning it on again, otherwise it will be blocked by the safety mechanism.

3 Maintenance and repairs

To maintain optimal condition and stable operation of the device, it is recommended to periodically perform the following actions:

- clean the device body and the stand;
- clean the inner surface of the device.

WARNING! Before cleaning the device, unplug it from the power outlet and wait until it has cooled down completely.

3.1 Cleaning the device body and stand

To clean the body of the device from dirt and dust, first use a slightly damp cotton cloth (napkin), then wipe with a dry one (see Figure 8).

If heavily soiled, wipe the body with a soft cloth moistened in a mild soap solution. Then clean with a cloth moistened in water and wipe dry.

WARNING! Do not use chemicals, harsh detergents, abrasive pastes, acids, solvents, or wire sponges that could damage the device and its coating.

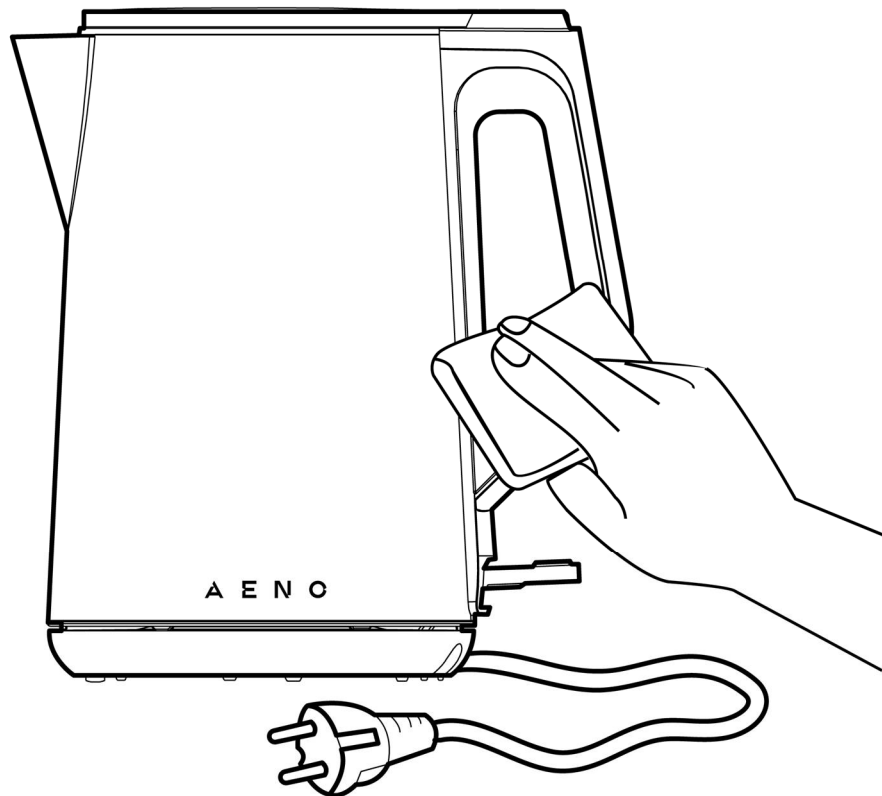


Figure 8 – Cleaning the device body

WARNING! The stand can only be cleaned with a dry cloth or napkin. Do not wash the device and its accessories in the dishwasher.

3.2 Cleaning the inside of the device

NOTE. Use only purified water to reduce limescale build-up.

When using the electric kettle regularly (3–5 times a day), the frequency of descaling the inner surface of the device depends on the hardness of the water used:

- if the water is hard or very hard, cleaning is recommended once a month;
- if the water is of medium hardness or soft, cleaning is recommended once every 2–3 months.

The table below shows how to remove limescale from the inside of the electric kettle.

Table 2 – Descaling agents and cleaning methods

| Agent | How to use |
|---------------|--|
| Citric acid | Boil 0.5 l of water. Add 25 g of citric acid and leave for 15 min. Pour out the contents, wash the kettle by drawing and draining the water 5–6 times |
| Table vinegar | Pour 0.5 l of vinegar (6 % or 9 %) into the kettle, leave for 1 hour without boiling. Pour out the contents, wash the kettle by drawing and draining the water 5–6 times |
| Descaler | Follow the manufacturer's instructions on the product package |

4 Warranty obligations

The service life of the device is two (2) years. The manufacturer's warranty for this product is two (2) years from the date of retail sale. The manufacturer's warranty on accessories is two (2) years from the date of retail sale.

You may have other rights under the laws of your country that govern the sale of consumer goods. This limited warranty does not affect such rights.

The manufacturer guarantees proper functioning of all materials, components and assembly of AENO™ products provided that the rules of operation set forth in the user manual of the device are followed during the warranty period.

For warranty replacement, the device must be returned to the retailer, along with the receipt verifying the purchase.

The following are not considered defects:

- the smell of new plastic or rubber emitted by the device during the first days of operation;
- change of colour shade, gloss of equipment parts during operation;
- noises (not exceeding the sanitary norms) related to the principles of operation of the individual components, namely:
 - fans;
 - water valves;
 - electrical relays;
 - electric motors;
 - belts;
 - compressors;
- noises caused by natural wear and tear (aging) of materials, namely:
 - crackling during heating/cooling;
 - creaks;
 - minor knocking of moving mechanisms;
- the need to replace consumables and wear parts that have become unusable as a result of their natural wear and tear.

4.1 AENO™ service centres

For a list of cities where the manufacturer's service is available, visit **aeno.com**.

4.2 Warranty service procedure

If you discover a suspected fault or defect in the device, you should contact an authorized service centre before the warranty period expires and provide the following information:

1. A device with an alleged fault or defect.
2. Original document confirming the purchase.

In the absence of an authorized service centre, the customer should contact the store where the device was purchased.

Warranty service does not cover:

- the adjustments, setting, cleaning and other care of the product as specified in this user manual;
- the replacement of consumables (batteries, filters, light bulbs, dust bags, etc.) as specified in this document.

4.3 Limitation of liability

Products with manufacturing defects are subject to warranty service during the warranty period. In this case, the warranty period is extended for a period equal to the duration of the repair.

AENO™ products are not eligible for free warranty service if the following damages or defects are found:

- damage caused by force majeure, accidents, negligence, intentional or careless actions (omissions) of the buyer or third parties;
- damage caused by the effects of other objects, including but not limited to exposure to moisture, dampness, extreme temperatures, or environmental conditions (or if they change drastically), corrosion, oxidation, ingress of food or liquid and exposure to chemicals, animals, insects, and their products of vital activity;
- if the device (accessories, components) has been opened (the seals are broken), altered or repaired by anyone other than an authorized service centre, or with unauthorized replacement parts;
- defects or damage caused by improper use, misuse, including use contrary to the operating instructions;

- defects caused by normal wear and tear, including bags, cases, battery packs, or user manuals;
- if the serial number (factory stickers), manufacturing date or model name on the device have been removed, erased, damaged, altered or is illegible in any way;
- in case of violation of the rules and conditions of operation, as well as the installation of the device, set forth in the operating manual;
- cracks and scratches as well as other defects resulting from transportation, operation by the purchaser or negligent handling on his part;
- mechanical damage that occurs after the device has been transferred to the user, including damage caused by sharp objects, bending, crushing, dropping, etc;
- damage caused by non-compliance with standards for parameters of power, telecommunications, cable networks and external factors.

This limited warranty is the exclusive and sole warranty provided and is in lieu of any other express or implied warranties. The manufacturer makes no warranty, either express or implied, beyond the description contained herein, including an implied warranty of merchantability and fitness for a particular purpose. It remains at the discretion of the purchaser to use a faulty, defective and unacceptable device. The manufacturer shall not be liable for damages to other property due to any defects in the device, loss of use of the device, loss of time, or for any special, incidental, indirect or consequential damages, punitive damages and losses, including but not limited to commercial damages, loss of profits, loss of profits, loss of confidential or other information, loss of business or operational interruption due to the device being found to be defective, defective or deficient

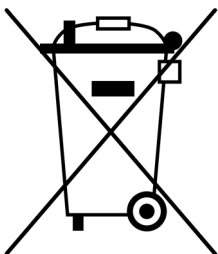
NOTE. The manufacturer does not produce equipment for the field of "vital tasks". Devices for "vital tasks" include life support systems, medical equipment, implant-related medical devices, commercial transportation, nuclear equipment or systems, and any other application where equipment failure could result in personal injury or death, or property damage.

5 Storage, transportation and disposal

To avoid the accumulation of dust and dirt on the housing, as well as exposure to humidity during long interruptions in use, it is recommended to store the device in its original packaging. Before storing, be sure to let the device cool down, clean the inside and outside surfaces, and make sure it is completely dry. It is recommended to store the device on the stand with the lid closed in a dry closed room, out of the reach of children and isolated from the storage of acids and alkalis, away from heaters, excluding direct sunlight and moisture. Protect the device from large temperature fluctuations.

The device must be transported in its original packaging in a fixed upright position. Transportation is possible over any distances by any type of transport that ensures the safety of the device, in accordance with the rules of cargo transportation, operating on the given type of transport. Do not allow water to get on the packaging and/or the product.

NOTE. The user must observe the temperature and humidity conditions for storage and transportation specified in the table of specifications above.



In accordance with the Waste Electrical and Electronic Equipment (WEEE) regulations, all electrical and electronic products must be collected separately at the end of their service life and cannot be disposed of together with unsorted municipal waste.

Parts of unusable devices must be separated and sorted by material type. In this way, each user can contribute to the reuse, recycling and other forms of recovery of waste electrical and electronic equipment. Proper collection, recycling, and disposal of these devices will help avoid potential environmental and health impacts from the harmful substances they contain.

To dispose of the device, it must be returned to the point of sale or to a local waste and recycling collection point recommended by the state or local authorities. If the user cannot deliver the device for disposal to a specialized collection and recycling facility, it can also be delivered to a building and hardware store, the local department of the Ministry of Emergency Situations, or a similar institution.

Disposal is carried out in accordance with the applicable laws and regulations of the respective country.

For more detailed information on how to properly dispose of your used device, please contact your device supplier, your waste disposal service or the local authorities responsible for waste disposal.

6 Other information

Manufacturer details

| | |
|--------------|---|
| Title | ASBISc Enterprises PLC |
| Address | 43 Kolonakiou Street, Diamond Court, Agios Athanasios, 4103 Limassol, Cyprus |
| Contact info | Tel.: +357-25857090 www.asbis.com |

Information about the importing company

| | |
|--------------|---|
| Title | ASBISc Enterprises PLC |
| Address | 43 Kolonakiou Street, Diamond Court, Agios Athanasios, 4103 Limassol, Cyprus |
| Contact info | Tel.: +357-25857090 www.asbis.com |

Information about the organization that provides warranty service and accepts quality claims

| | |
|--------------|---|
| Title | ASBISc Enterprises PLC |
| Address | 43 Kolonakiou Street, Diamond Court, Agios Athanasios, 4103 Limassol, Cyprus |
| Contact info | Tel.: +357-25857090 www.asbis.com |

Information about obtained certificates and declarations of conformity

| | |
|--------------|--|
| Certificates | Certificate of Conformity № EAЭC RU C-CY.HE23.B.00234/21 of December 28, 2021 |
| Declarations | Declaration of conformity of the EAEU |

| | |
|--|--|
| | of December 28, 2021 EU Declaration of Conformity of October 25, 2021 RoHS Declaration of Conformity of October 25, 2021 Declaration of Conformity of Ukraine of November 09, 2021 |
|--|--|

The addresses of the service centres can be found at **aeno.com** under "Service and Warranty".

7 Troubleshooting

The table below shows typical errors and problems that may occur while using the device and possible solutions.

Table 3 – Typical problems and solutions

| Nº | Problem | Possible causes | Solution |
|----|--------------------------------|--|--|
| 1 | The device does not turn on | There is no power in the outlet to which the device is connected | Check that the power outlet is working by plugging in another appliance. If necessary, reconnect the device to a working power outlet |
| | | The kettle is poorly placed on the stand | Remove the kettle from the stand and put it back |
| | | The power cord or plug are damaged | Contact the service centre |
| 2 | The device shuts down untimely | There is no water in the kettle or the water level is below the "MIN" mark, which triggers the overheat protection | Make sure there is water in the kettle and its level is above the "MIN" mark. Allow the device to cool down before turning it on again |
| | | Scale formation on the inner surface of the kettle | Follow the instructions in section 3.2 "Cleaning the inside of the device" |

| Nº | Problem | Possible causes | Solution |
|----|---|--|--|
| 3 | There is power supply in the mains, as well as water in the kettle, but the device does not turn on | The device has not cooled down after the overheat protection has tripped | Allow the device to cool down before turning it on again |
| | | Short-circuit in the electrical circuit of the device | Contact the service centre |
| 4 | The device does not turn off automatically after boiling water | The device lid is not closed | Make sure the device lid is tightly closed |
| | | The switch is defective | Contact the service centre |

WARNING! If none of the possible solutions solves the problem, contact your supplier or service centre. Please do not disassemble or attempt to repair the device on your own.

8 Glossary

| | |
|---------|--|
| Class I | Electrical safety class, according to which the grounding is set at the time of manufacture. |
| PP | Durable and rigid thermoplastic, resistant to chemically active liquids, which is widely used in the manufacture of household products. |
| Strix | Kettle connector of high quality, which provides maximum safety and convenience when using the electric kettle. |
| WEEE | Waste Electrical and Electronic Equipment means used electrical or electronic equipment, including all components, subassemblies, consumables that are part of the equipment at the time it is taken out of service (including supplied batteries/rechargeable batteries (if any), components containing mercury, etc.). |

Ovaj dokument je originalno proizveden i objavljen od strane proizvođača, brenda AENO, i preuzet je sa njihove zvanične stranice. S obzirom na ovu činjenicu, Tehnoteka ističe da ne preuzima odgovornost za tačnost, celovitost ili pouzdanost informacija, podataka, mišljenja, saveta ili izjava sadržanih u ovom dokumentu.

Napominjemo da Tehnoteka nema ovlašćenje da izvrši bilo kakve izmene ili dopune na ovom dokumentu, stoga nismo odgovorni za eventualne greške, propuste ili netačnosti koje se mogu naći unutar njega. Tehnoteka ne odgovara za štetu nanесenu korisnicima pri upotrebi netačnih podataka. Ukoliko imate dodatna pitanja o proizvodu, ljubazno vas molimo da kontaktirate direktno proizvođača kako biste dobili sve detaljne informacije.

Za najnovije informacije o ceni, dostupnim akcijama i tehničkim karakteristikama proizvoda koji se pominje u ovom dokumentu, molimo posetite našu stranicu klikom na sledeći link:

<https://tehnoteka.rs/p/aeno-kuvalo-za-vodu-ek2-akcija-cena/>