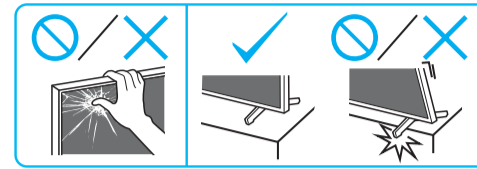
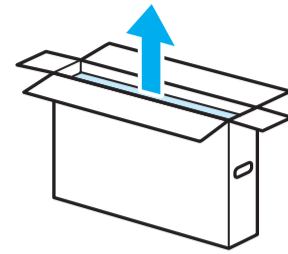


Setup Guide



EE	Seadistusjuhend	SI	Priloga za pripravo
LV	Uzsākšanas ceļvedis	SR	Vodič za podešavanje
LT	Nustatymo vadovas	HE	מדריך הגדרה
HR	Vodič za postavljanje		



1

SB1 SB2 M4L12

IM

1.2 N-m/1,2 N-m (12 kgf-cm)

2

3

4

M4L12 SB2

5

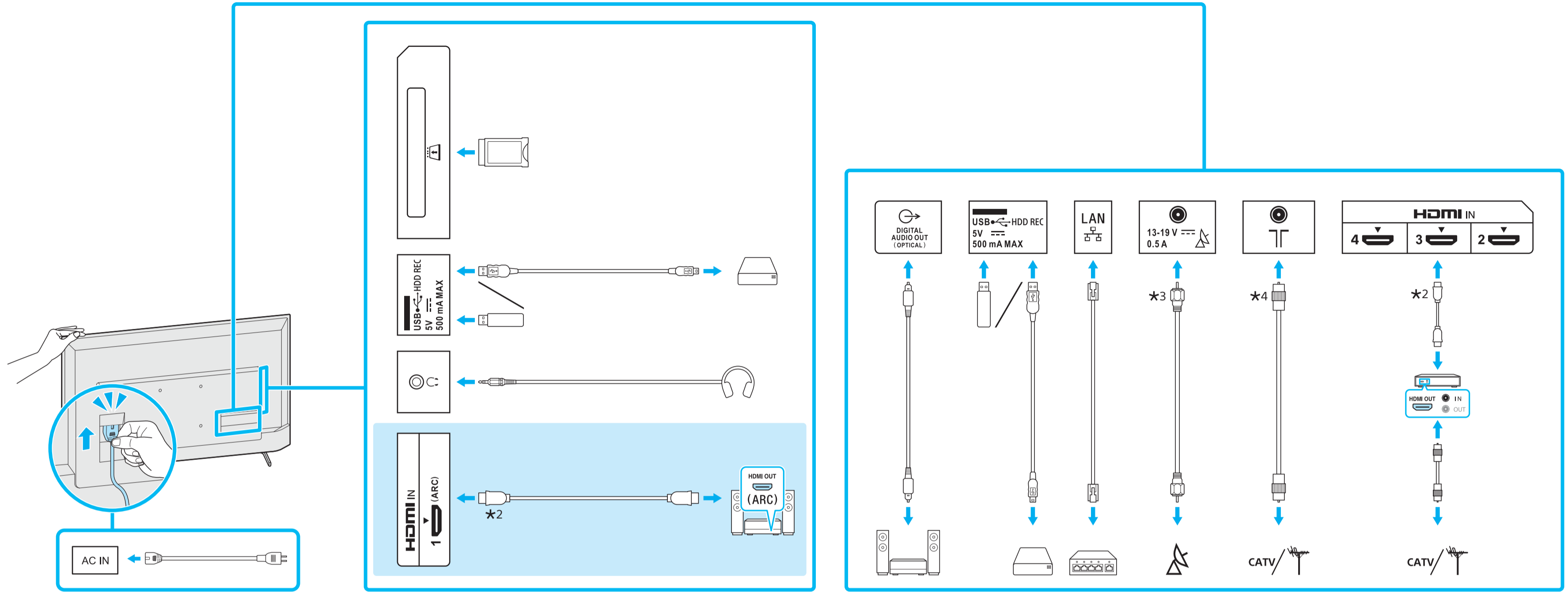
M4L12 SB1

6

7

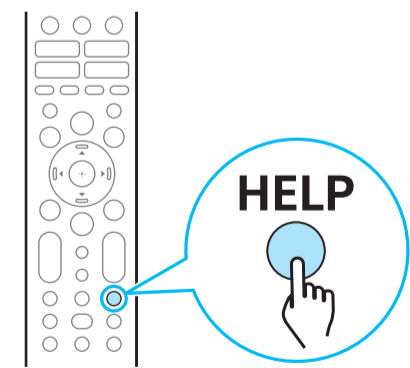
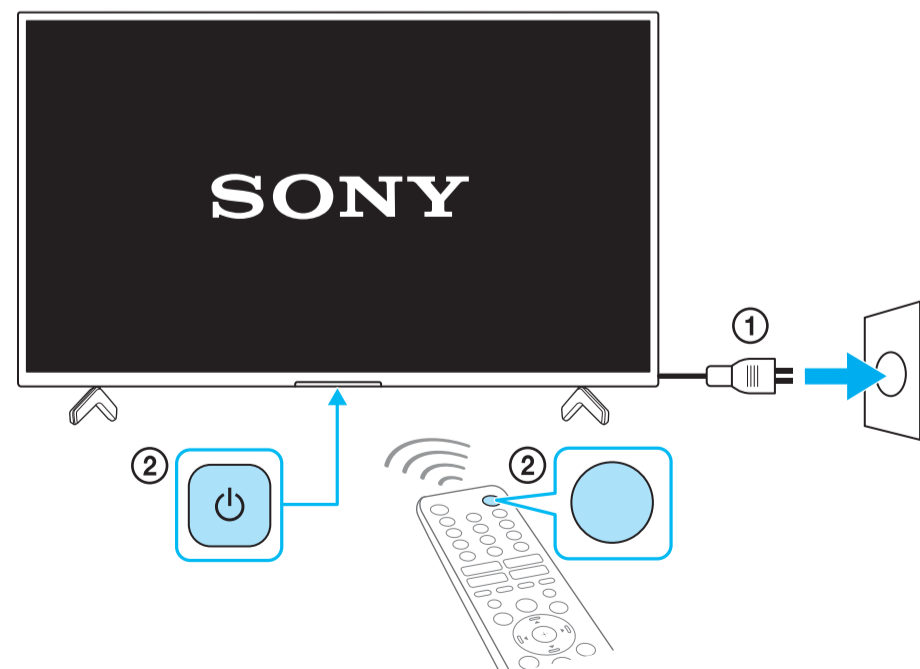
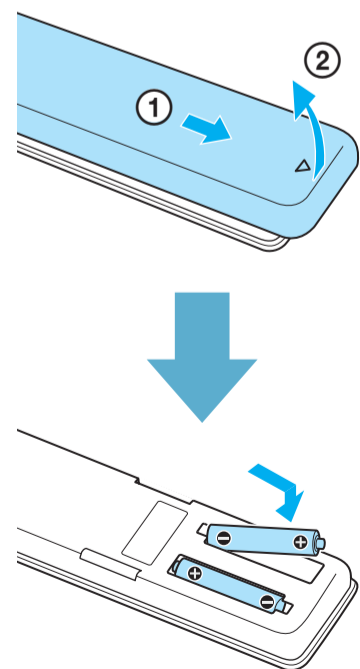
*1 Ainult teatud telerimudelitele. / Tikai ierobežotam TV modelim. / Tik tam skirtam televizoriaus modeliui. / Vrijedi samo za određene modele TV-a. / Samo za omejeni model televizorja. / Samo za neke modele televizora. / רובע ימנר הייוולט סילבנומ דבלב.



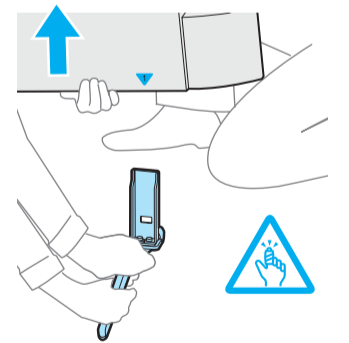
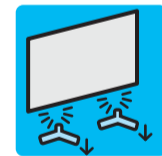


*2 < 21 (mm) / < 12 (mm)
 *3 < 7 (mm) / < 1.5/1,5 (mm)
 *4 < 14 (mm)

(mm) / (מ״מ)



Spikker / Palīdzība / Žinynas / Pomoc / Pomoc / Pomoc / עזרה



<https://www.sony.eu/support>