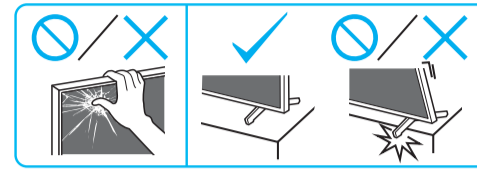
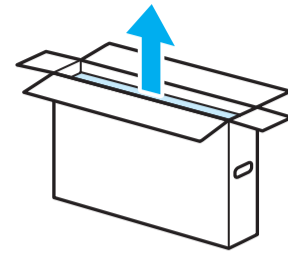


# Setup Guide



EE	Seadistusjuhend
LV	Uzsākšanas ceļvedis
LT	Nustatymo vadovas
HR	Vodič za postavljanje

SI	Priručnik za pripravo
SR	Vodič za podešavanje
HE	מדריך הגדרה



**1**

SB1 SB2  
M4L12  
IM

1.2 N-m/1,2 N-m  
{12 kgf-cm}

**2**

**3**

**4**

M4L12 SB2

**5**

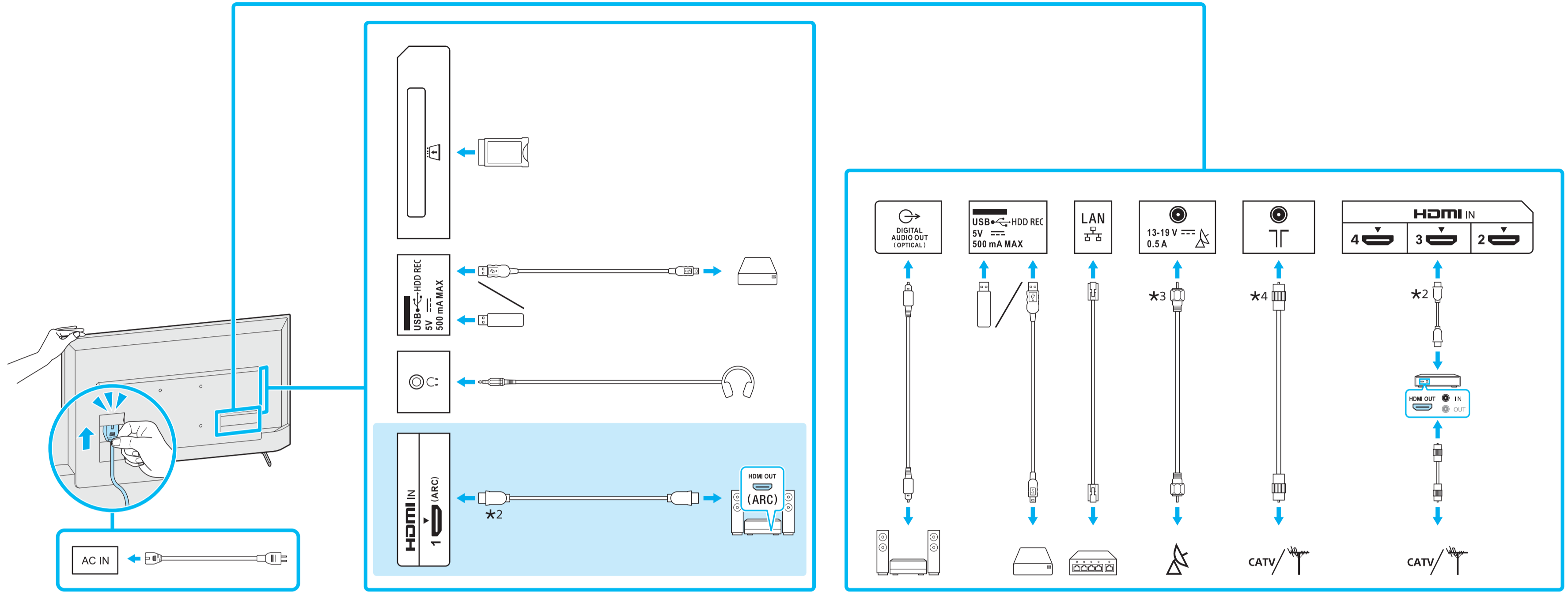
M4L12 SB1

**6**

**7**

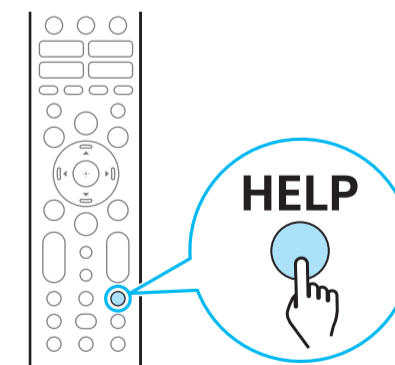
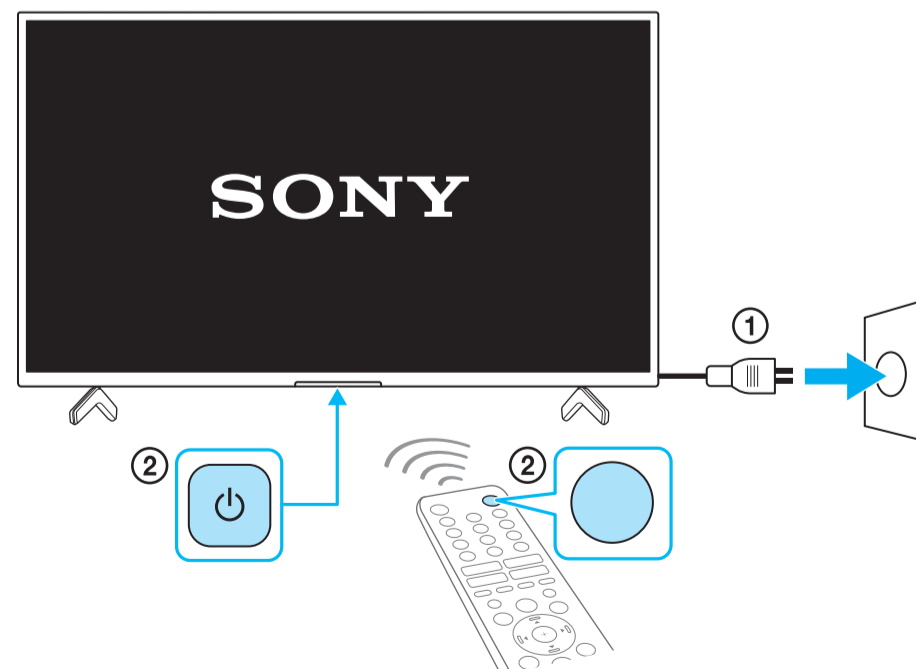
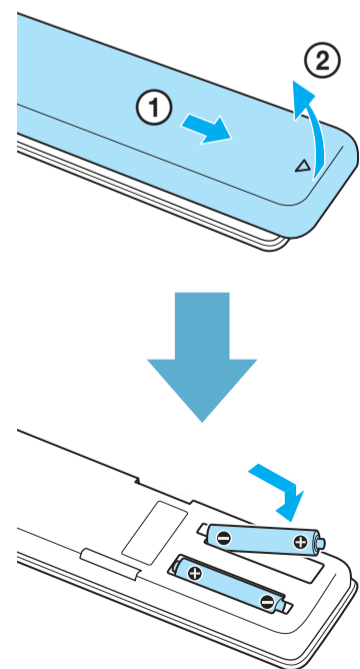
\*1 Ainult teatud telerimudelitele. / Tikai ierobežotam TV modelim. / Tik tam skirtam televizoriaus modeliui. / Vrijedi samo za određene modele TV-a. / Samo za omejeni model televizorja. / Samo za neke modele televizora. / רובע ימנר הייוולט סילבנומ דבלב.



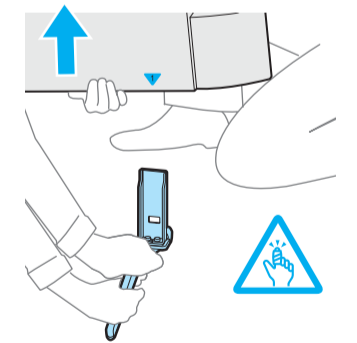
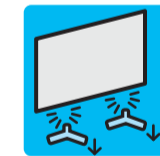


\*2 < 21 (mm) / < 12 (mm)  
 \*3 < 7 (mm) / < 1.5/1,5 (mm)  
 \*4 < 14 (mm)

(mm) / (מ״מ)



Spikker / Palīdzība / Žinynas / Pomoc / Pomoc / Pomoc / עזרה



<https://www.sony.eu/support>