

Uputstvo za upotrebu (EN)

TURTLE BEACH slušalice Recon Chat Xbox bele



Tehnoteka je online destinacija za upoređivanje cena i karakteristika bele tehnike, potrošačke elektronike i IT uređaja kod trgovinskih lanaca i internet prodavnica u Srbiji. Naša stranica vam omogućava da istražite najnovije informacije, detaljne karakteristike i konkurentne cene proizvoda.

Posetite nas i uživajte u ekskluzivnom iskustvu pametne kupovine klikom na link:

<https://tehnoteka.rs/p/turtle-beach-slusalice-recon-chat-xbox-bele-akcija-cena/>

EAR FORCE®

RECON CHAT

QUICK START GUIDE

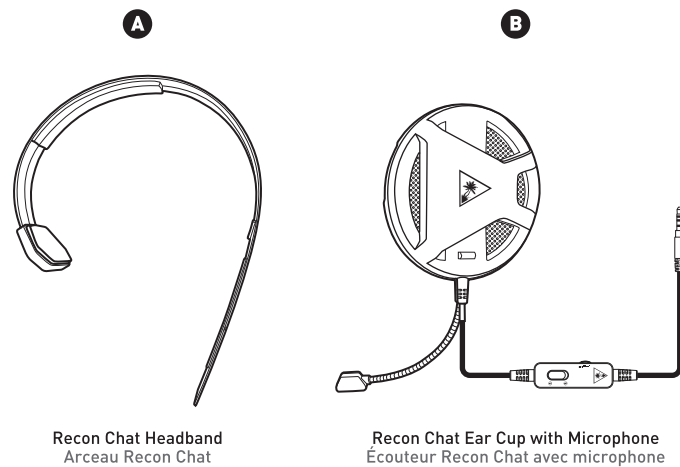
GUIDE DE DÉMARRAGE RAPIDE

IMPORTANT
ASSEMBLY & SETUP INSTRUCTIONS INSIDE
À LIRE
INSTRUCTIONS DE MONTAGE ET DE CONFIGURATION INCLUSES

Any Questions? Des questions ?
turtlebeach.com/Reconchat | turtlebeach.com/Support

Package Contents

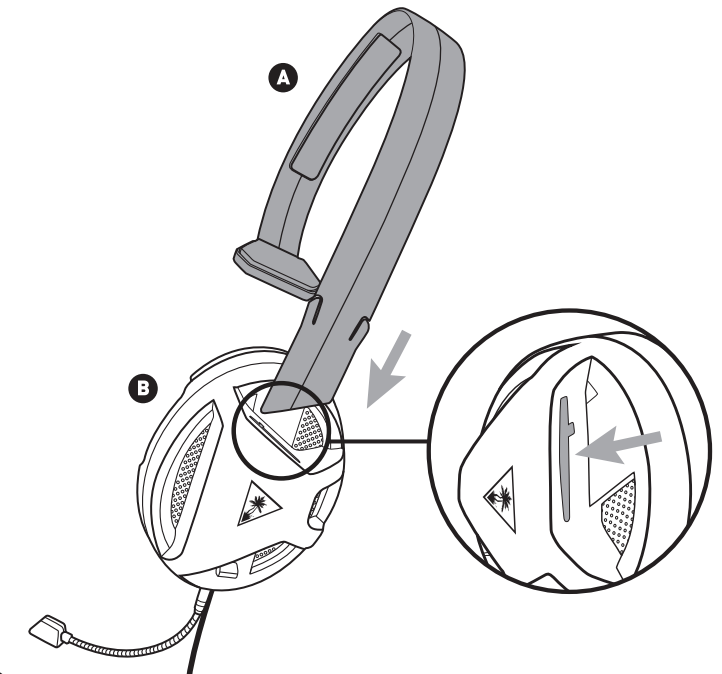
Contenu de la boîte



426-019-001-110 RA

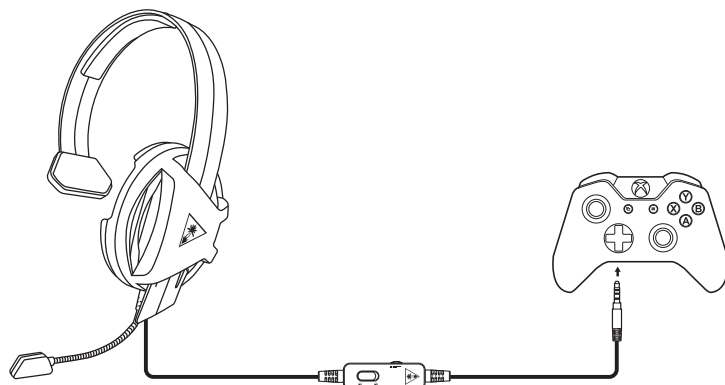
Assemble the Recon Chat

Assemble le Recon Chat



Setup for Xbox One® Use

Configuration pour Xbox One®



Note: The Recon Chat works with Xbox One Controllers with (3.5mm headset jack). Other controllers require the Xbox One Headset Audio Controller. (Available at turtlebeach.com.)

Remarque : Le casque Recon Chat prend en charge les manettes Xbox One dotées (d'une prise jack de 3,5 mm). Les autres manettes nécessitent un adaptateur audio pour casque Xbox One. (Disponible sur turtlebeach.com.)

1. Go to Settings >> All Settings >> Kinect & Devices >> Devices & Accessories >> Xbox One Wireless Controller >> Volume
a. Set Headset Volume to Maximum
b. Set Mic monitoring to your preferred level

FR
1. Ouvrez Paramètres >> Tous les paramètres >> Kinect et appareils >> Appareils et accessoires >> Manette sans fil Xbox One® >> Volume
a. Paramétrez le volume du casque au maximum
b. Paramétrez le retour micro selon vos préférences

ES
1. Ve a Configuración >> Todas las configuraciones >> Kinect y dispositivos >> Dispositivos y accesorios >> Mando inalámbrico de Xbox One >> Volumen
a. Configura el volumen de los auriculares al máximo
b. Configura el monitor de micrófono a tu nivel preferido

IT
1. Accedere a Impostazioni >> Tutte le impostazioni >> Kinect e dispositivi >> Dispositivi e accessori >> Controller wireless Xbox One >> Volume
a. Impostare il volume della cuffia al massimo
b. Impostare il controllo microfono sul livello preferito

PT
1. Dirige-te a Definições >> Todas as definições >> Kinect e dispositivos >> Dispositivos e acessórios >> Comando sem fios Xbox One >> Volume
a. Coloca o volume dos auriculares no máximo
b. Coloca a monitorização de microfone no nível que preferires

DE
1. Wählen Sie Einstellungen >> Alle Einstellungen >> Kinect & Geräte >> Geräte & Zubehör >> Xbox One Wireless Controller >> Lautstärke
a. Stellen Sie die Headset-Lautstärke auf das Maximum ein
b. Stellen Sie den Mikromonitor auf Ihre bevorzugte Lautstärke ein

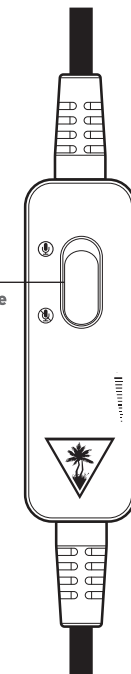
SE
1. Gå till Inställningar >> Alla inställningar >> Kinect och enheter >> Enheter och tillbehör >> Xbox One trådlös handkontroll >> Volym
a. Justera headsetvolym till högsta
b. Justera mikrofonåterspelning ("Mic monitoring") till önskad nivå

DK
1. Gå ind i Indstillinger >> Alle indstillinger >> Kinect og enheder >> Enheder og tilbehør >> Trådløs Xbox One-controller >> Lydstyrke
a. Skru helt op for Headset-lydstyrke
b. Indstil Mikrofon-aktivering til det ønskede niveau

NL
1. Ga naar Settings >> All Settings >> Kinect & Devices >> Devices & Accessories >> Xbox One Wireless Controller >> Volume
a. Stel Headset Volume in op Maximum
b. Stel Mic monitoring in op je gewenste niveau

In-Line Controls

Câble avec commandes intégrées



Mic Mute Switch
Switch to to mute the microphone.

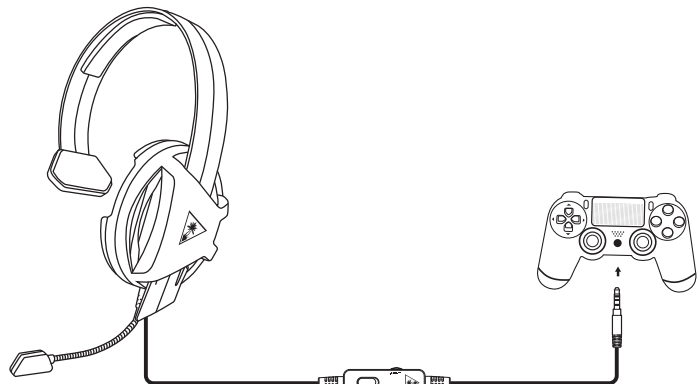
Bouton de coupure du microphone
sélectionnez pour couper le micro.

Master Volume
Adjusts the master volume of the incoming chat audio.

Volume principal
régle le volume principal du jeu et du chat vocal entrant.

Setup for PS4™ Use

Configuration pour PS4™



- Go to Settings >> Devices >> Audio Devices
- Set Input & Output Device to Headset Connected to Controller
- Set Output to Headphones to Chat Audio
- Set Volume Control (Headphones) level to maximum
- Select Adjust Microphone Level and follow the on-screen instructions to calibrate your microphone

FR
1. Ouvrez Paramètres >> Périphériques >> Périphériques audio
2. Dans Périphérique d'entrée et Périphérique de sortie, sélectionnez Casque branché à la manette
3. Dans Sortie vers le casque, sélectionnez Audio du Chat
4. Le niveau de volume du paramètre Réglage du volume (casque) doit être au maximum
5. Sélectionnez Régler le niveau du microphone et suivez les instructions à l'écran pour régler votre microphone

ES
1. Ve a Configuración >> Dispositivos >> Dispositivos de sonido
2. Selecciona los Dispositivos de entrada y de salida a auriculares conectados al mando
3. Configura la salida de los auriculares al audio del chat
4. Configura el nivel del control de volumen (cascos) al máximo
5. Selecciona Ajustar el nivel del micrófono y sigue las instrucciones para calibrar el micrófono

IT
1. Selezionare Impostazioni >> Dispositivi >> Dispositivi audio
2. Selezionare come dispositivo di ingresso e di uscita le cuffie collegate al controller
3. Impostare l'opzione Riproduci l'audio tramite cuffie su Audio della chat.
4. Impostare il livello di Controllo del volume (cuffie) al massimo
5. Selezionare l'opzione Regola il livello del microfono e seguire le istruzioni a schermo per calibrare il microfono

PT
1. Dirija-se a Definições >> Dispositivos >> Dispositivos de Áudio
2. Selecciona os auscultadores ligados ao comando como o dispositivo de entrada e saída de áudio
3. Defina a Saída nos Auscultadores para Chat Áudio
4. Defina o "Controlo de volume (auscultadores)" para o máximo
5. Selecciona "Ajustar nível do microfone" e siga as instruções de calibração no ecrã

NL
1. Ga naar Instellingen >> Apparaten >> Audioapparaten
2. Stel Invoer- en uitvoerapparaat in op Headset aangesloten op controller
3. Stel de uitvoer in op Hoofdtelefoon naar chataudio
4. Stel Volumebediening (hoofdtelefoon) in op maximaal
5. Selecteer Microfoonniveau aanpassen en volg de instructies in beeld om je microfoon te kalibreren

DE
1. Wählen Sie Einstellungen >> Geräte >> Audiogeräte
2. Wählen Sie unter Eingabe- und Ausgabe-Gerät das mit dem Controller verbundene Headset aus
3. Stellen Sie die Ausgabe an Kopfhörer auf Chat-Sound ein
4. Stellen Sie die Lautstärkeregelung (Kopfhörer) auf Maximum ein
5. Wählen Sie die Option zur Einstellung des Mikrofonpegels und folgen Sie den Anweisungen zur Kalibrierung Ihres Mikrofons

SE
1. Gå till Inställningar >> Enheter >> Ljudenheter
2. Ställ in In- och utdataenhet till Headset anslutet till handkontroll
3. Ställ in Utdata till hörlurar till Chatt ljud
4. Ställ in volymkontroll (hörlurar) till maximal nivå
5. Välj Justera mikrofonnivå och följ instruktionerna på skärmen för att kalibrera din mikrofon

DK
1. Gå til Indstillinger >> Enheder >> Lydenheder
2. Indstil Input & Output Device til Headset Connected to Controller
3. Indstil Output til hovedtelefoner til Chatlyd
4. Indstil lydstyrken (hovedtelefoner) til det maksimale niveau
5. Vælg Tilpas mikrofonlydstyrke, og følg instruktionerne på skærmen for at kalibrere din mikrofon

Regulatory Compliance Statements for the EAR FORCE Recon Chat Model

Federal Communications Commission (FCC) Compliance Notices

Class B Interference Statement

This equipment has been tested and found to comply with the limits for a Class B digital device, pursuant to Part 15, Subpart B of the FCC Rules. These limits are designed to provide reasonable protection against harmful interference in a residential installation. This equipment generates, uses, and can radiate radio frequency energy and, if not installed and used in accordance with the instructions, may cause harmful interference to radio communications. However, there is no guarantee that interference will not occur in a particular installation. If this equipment does cause harmful interference to radio or television reception, which can be determined by turning the equipment off and on, the user is encouraged to try to correct the interference by one or more of the following measures:

- Reorient or relocate the receiving antenna.
- Increase the separation between the equipment and receiver.
- Connect the equipment into an outlet on a circuit different from that to which the receiver is connected.
- Consult the dealer or an experienced radio/TV technician for help.

FCC Caution:

This device complies with Part 15 of the FCC Rules. Operation is subject to the following two conditions: (1) This device may not cause harmful interference, and (2) this device must accept any interference received, including interference that may cause undesired operation.

Canadian ICES Statements

Canadian Department of Communications Radio Interference Regulations
This digital apparatus does not exceed the Class B limits for radio-noise emissions from a digital apparatus as set out in the Radio Interference Regulations of the Canadian Department of Communications. This Class B digital apparatus complies with Canadian ICES-003.
Règlement sur le brouillage radioélectrique du ministère des Communications
Cet appareil numérique respecte les limites de bruits radioélectriques visant les appareils numériques de classe B prescrites dans le Règlement sur le brouillage radioélectrique du ministère des Communications du Canada. Cet appareil numérique de la Classe B est conforme à la norme NMB-003 du Canada.

European Union and European Fair Trade Association (EFTA) Regulatory Compliance

Declaration of Conformity

Marking by this symbol:

indicates compliance with the Essential Requirements of the EMC Directive of the European Union (2014/30/EU). This equipment meets the following conformance standards:

Safety: EN 60950-1: 2006 + A11: 2009 + A1: 2010 + A12: 2011 + A2: 2014 (T-Mark License), IEC 60950-1: 2005 (2nd Ed.) + Am 1: 2009 + Am 2: 2013 (CB Scheme Certificate), EN 50332-1: 2000, EN 50332-2: 2003, EN 71-3: 2013
Also Licensed for Standards:
UL 60950-1: 2007 R10.14, CAN/CSA-C22.2 No. 60950-1-07 + A1: 2011 + A2: 2014
Additional licenses issued for specific countries available on request

Emissions: EN 55022: 2010 + AC: 2011, CISPR 22: 2008

Immunity: EN 55024: 2010, CISPR 24: 2010,

EN 61000-4-2: 2009, EN 61000-4-3: 2006 + A2: 2010, EN 61000-4-8: 2010

The products are licensed, as required, for additional country specific standards for the International Marketplace. Additional issued licenses available upon request.

Environmental: Low Voltage Directive 2014/35/EU, RoHS 2011/65/EU, REACH 2006/1907/EC, WEEE 2012/19/EU, Packaging 94/62/EC, Toys Safety Directive 2009/48/EC



This symbol on the product or its packaging indicates that this product must not be disposed of with your other household waste. Instead, it is your responsibility to dispose of your waste equipment by handing it over to a designated collection point for the recycling of waste electrical and electronic equipment. The separate collection and recycling of your waste equipment at the time of disposal will help conserve natural resources and ensure that it is recycled in a manner that protects human health and the environment. For more information about where you can drop off your waste for recycling, please contact your local authority, or where you purchased your product.

Please visit the following URL for a complete copy of the Declaration of Conformity:
<http://www.turtlebeach.com/homologation>

This product is compliant with the Consumer Product Safety Improvement Act of 2008, Public Law 110-314 (CPSIA)

Ovaj dokument je originalno proizveden i objavljen od strane proizvođača, brenda Turtle Beach, i preuzet je sa njihove zvanične stranice. S obzirom na ovu činjenicu, Tehnoteka ističe da ne preuzima odgovornost za tačnost, celovitost ili pouzdanost informacija, podataka, mišljenja, saveta ili izjava sadržanih u ovom dokumentu.

Napominjemo da Tehnoteka nema ovlašćenje da izvrši bilo kakve izmene ili dopune na ovom dokumentu, stoga nismo odgovorni za eventualne greške, propuste ili netačnosti koje se mogu naći unutar njega. Tehnoteka ne odgovara za štetu nanесenu korisnicima pri upotrebi netačnih podataka. Ukoliko imate dodatna pitanja o proizvodu, ljubazno vas molimo da kontaktirate direktno proizvođača kako biste dobili sve detaljne informacije.

Za najnovije informacije o ceni, dostupnim akcijama i tehničkim karakteristikama proizvoda koji se pominje u ovom dokumentu, molimo posetite našu stranicu klikom na sledeći link:

<https://tehnoteka.rs/p/turtle-beach-slusalice-recon-chat-xbox-bele-akcija-cena/>