

## Uputstvo za upotrebu (EN)

DELL set bežični miš i tastatura KM3322W SR(YU)



Tehnoteka je online destinacija za upoređivanje cena i karakteristika bele tehnike, potrošačke elektronike i IT uređaja kod trgovinskih lanaca i internet prodavnica u Srbiji. Naša stranica vam omogućava da istražite najnovije informacije, detaljne karakteristike i konkurentne cene proizvoda.

Posetite nas i uživajte u ekskluzivnom iskustvu pametne kupovine klikom na link:

<https://tehnoteka.rs/p/dell-set-bezicni-mis-i-tastatura-km3322w-sryu-akcija-cena/>




# Dell Wireless Keyboard and Mouse KM3322W User's Guide

Regulatory model: KB3322Wt / WM118t / UD2203t



# Notes, Cautions, and Warnings

---

-  **NOTE:** A NOTE indicates important information that helps you make better use of your computer.
-  **CAUTION:** A CAUTION indicates potential damage to hardware or loss of data if instructions are not followed.
-  **WARNING:** A WARNING indicates a potential for property damage, personal injury, or death.

© 2021 Dell Inc. or its subsidiaries. All rights reserved. Dell, EMC, and other trademarks are trademarks of Dell Inc. or its subsidiaries. Other trademarks may be trademarks of their respective owners.

2021-10

Rev. A00

# Contents

What's in the box . . . . .	5
Features . . . . .	6
Keyboard . . . . .	6
Mouse . . . . .	7
Setting up your wireless keyboard . . . . .	8
Setting up your wireless mouse . . . . .	9
Connecting your wireless keyboard and mouse . . . . .	11
Keyboard Specifications. . . . .	13
General . . . . .	13
Electrical . . . . .	13
Physical characteristics . . . . .	13
Environmental . . . . .	14
Wireless . . . . .	14
Mouse Specifications. . . . .	15
General . . . . .	15
Electrical . . . . .	15
Physical characteristics . . . . .	15
Environmental . . . . .	16
Wireless . . . . .	16



Troubleshooting . . . . . 17

Statutory Information . . . . . 20

    Warranty . . . . . 20

        Limited warranty and return policies . . . . . 20

        For U.S. customers: . . . . . 20

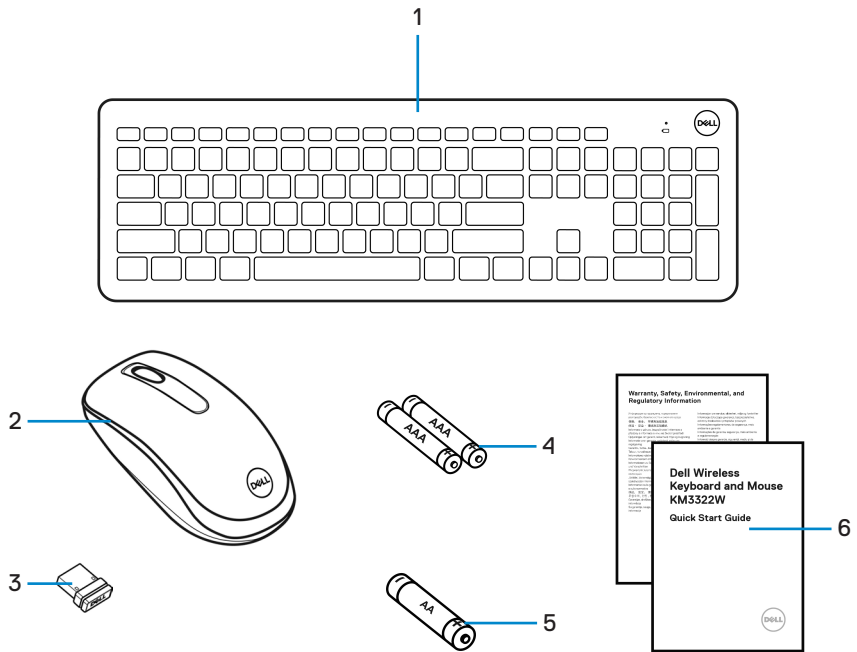
        For European, Middle Eastern and African customers: . . . . . 20

        For non-U.S. customers: . . . . . 20



# What's in the box

---



1. Keyboard

3. USB receiver

5. AA-type Battery (for mouse)

2. Mouse

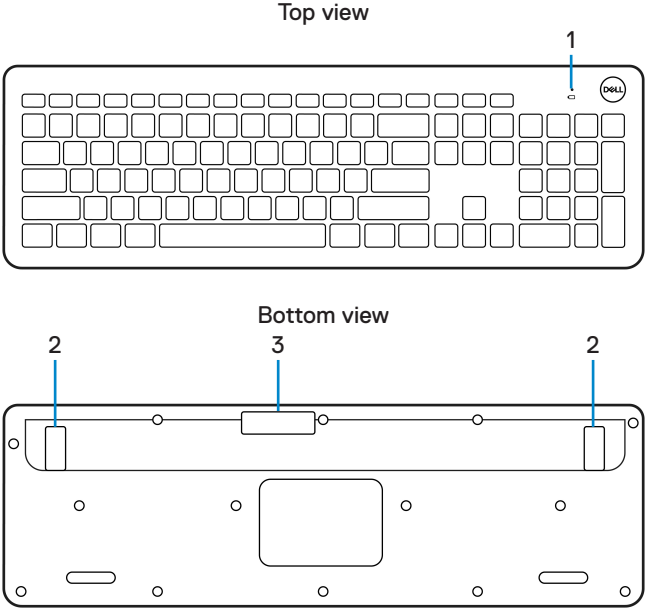
4. AAA-type Batteries (for keyboard)

6. Documents



# Features

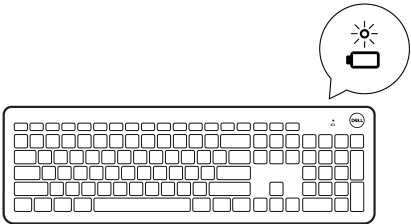
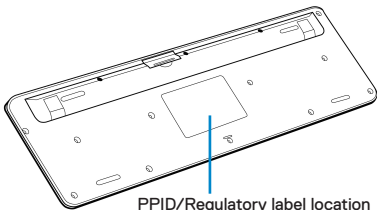
## Keyboard



- 1. Low battery status LED
- 2. Keyboard feet
- 3. Battery cover

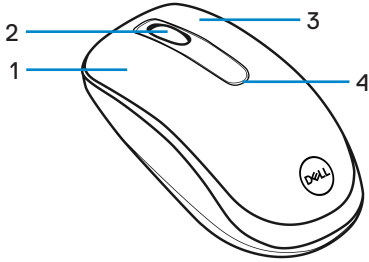
**NOTE:**

- 1) Keyboard will enter into auto power save mode if not used.
- 2) Low battery status LED will blink in amber colour when battery capacity is low.

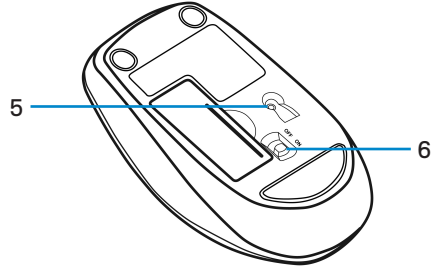


# Mouse

Top view



Bottom view



- 1. Left button
- 3. Right button
- 5. Optical sensor

- 2. Scroll wheel
- 4. Low battery status LED
- 6. Power switch



## NOTE:

- 1) Mouse will enter into auto power save mode if not used.
- 2) Low battery status LED will blink in amber colour when battery capacity is low.
- 3) Turn off the power switch when the mouse is not used to improve battery life.

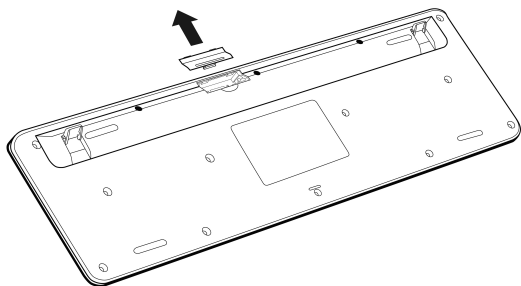




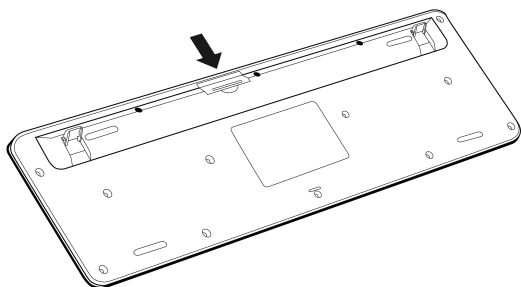
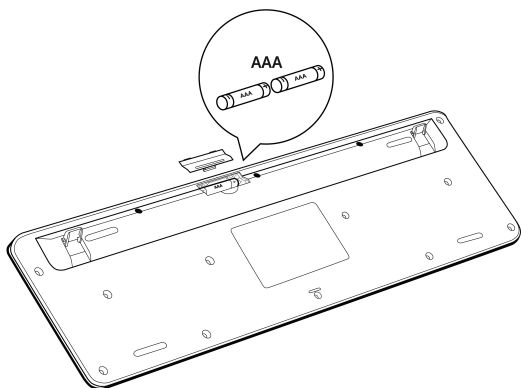
# Setting up your wireless keyboard

---

1. Using your fingertip, pry open the battery cover.



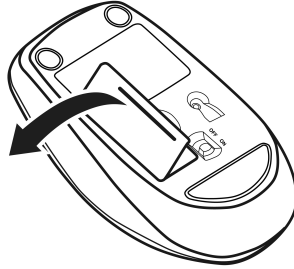
2. Install the AAA batteries into the battery compartment. Then close the battery cover.



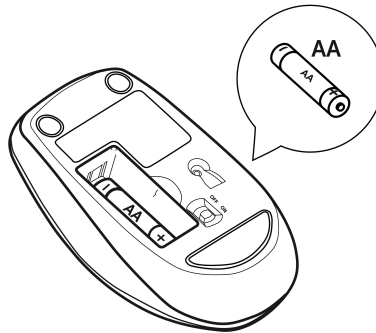
# Setting up your wireless mouse

---

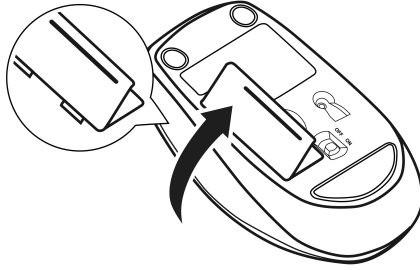
1. Locate the slot on the side of the mouse cover. Using your fingertip, pry open the cover.



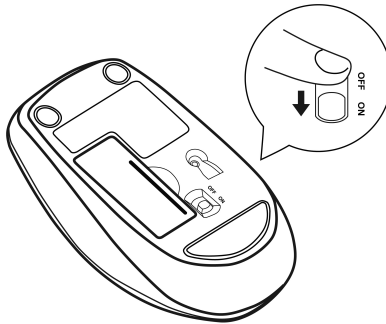
2. Install the AA battery into the battery compartment.



3. Close the mouse cover.



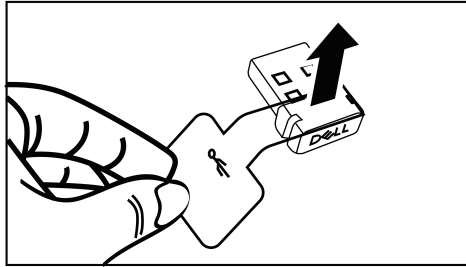
4. Slide the power switch down to turn on the mouse.



# Connecting your wireless keyboard and mouse

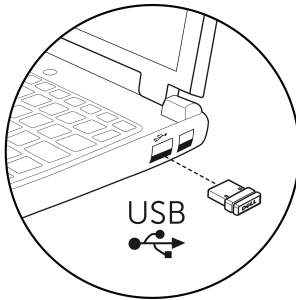
---

1. Detach the receiver tag from the USB receiver.

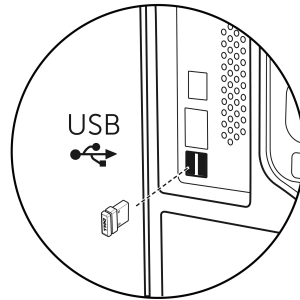


2. Install the USB receiver to the USB port on your computer.

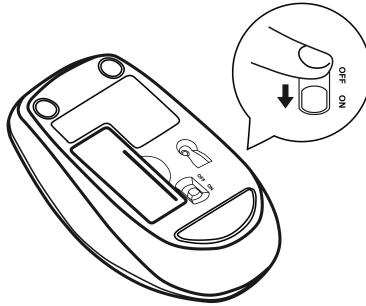
**Laptop**



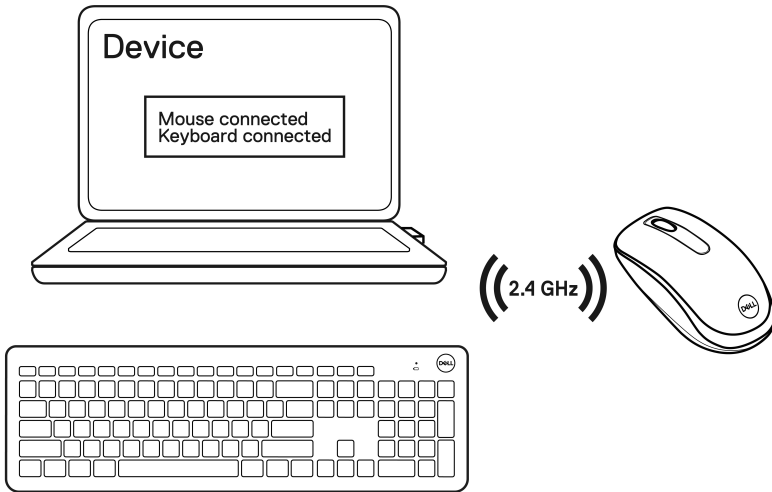
**Desktop**



3. Slide the power switch down to turn on the mouse.



The keyboard and mouse are paired with your USB device.



# Keyboard Specifications

---

## General

Regulatory model	KB3322Wt
Connection type	Wireless (2.4 GHz with nano receiver)
System requirement	<ul style="list-style-type: none"><li>• Windows Server 2012; 2012 R2, 2016 (RF receiver only)</li><li>• Windows 8, 32/64-bit</li><li>• Windows 10, 32/64-bit</li><li>• Windows 11, 32/64-bit</li><li>• Android</li><li>• Chrome</li><li>• MAC OS</li><li>• Linux 6.x, Ubuntu 18 and Redhat 8 Enterprise</li><li>• Free-DOS (RF receiver only)</li></ul>

## Electrical

Operating voltage	1.9V – 3.0V
Battery type	Two AAA batteries

## Physical characteristics

Weight (with batteries)	497 g (17.53 oz)
Dimensions:	
Length	444.9 mm (17.52 inch)
Width	141.2 mm (5.56 inch)
Height	25.3 mm (1.00 inch)



# Environmental

Temperature:

Operating	-10°C to 50°C (14°F to 122°F)
Storage	-40°C to 65°C (-40°F to 149°F)

Storage humidity	95% maximum relative humidity; non-condensing
------------------	--

# Wireless

RF resolution	2.4 GHz RF
Operating channel	2405MHz to 2474MHz
Operation distance	Up to 10 meters



# Mouse Specifications

---

## General

Regulatory model	WM118t
Connection type	Wireless (2.4 GHz with nano receiver)
System requirement	<ul style="list-style-type: none"><li>• Windows Server 2012; 2012 R2, 2016 (RF receiver only)</li><li>• Windows 8, 32/64-bit</li><li>• Windows 10, 32/64-bit</li><li>• Windows 11, 32/64-bit</li><li>• Android</li><li>• Chrome</li><li>• Linux 6.x, Ubuntu</li><li>• Free-DOS (RF receiver only)</li></ul>

## Electrical

Operating voltage	0.9V – 1.5V
Battery type	One AA battery

## Physical characteristics

Weight (without battery)	58 g (2.05 oz)
Dimensions:	
Length	105.0 mm (4.13 inch)
Width	58.3 mm (2.30 inch)
Height	38.9 mm (1.53 inch)





# Environmental

## Temperature:

Operating -10°C to 50°C (14°F to 122°F)

Storage -40°C to 65°C (-40°F to 149°F)

Storage humidity 95% maximum relative humidity;  
non-condensing

# Wireless

RF resolution 2.4 GHz RF

Operating channel 2405MHz to 2474MHz

Operation distance Up to 10 meters



# Troubleshooting

---

## Problems

## Possible solutions

---

Keyboard/mouse is not functioning

1. Check if the batteries are inserted in the correct orientation. The batteries “+” and “-” ends should be placed as indicated on the battery compartment.
  2. Check the battery level.
    - If the device uses the rechargeable batteries, ensure that the batteries are fully charged.
    - If the batteries are exhausted, replace them with a new ones.
  3. Turn off the device, and then turn it on. Check if the battery-status light is flashing amber 10 times, indicating that the battery power is low. If the batteries are fully depleted, the battery-status light will not turn on.
  4. Restart your computer.
  5. Ensure that the USB receiver is directly connected to your computer.
    - Avoid using the port replicators, USB hubs, and so on.
    - Insert the USB receiver to another USB port closer to the keyboard/mouse.
- 



Problems	Possible solutions
Unable to connect the keyboard/mouse with your computer	<ol style="list-style-type: none"> <li>1. Check the battery level. <ul style="list-style-type: none"> <li>• If the device uses the rechargeable batteries, ensure that the batteries are fully charged.</li> <li>• If the batteries are exhausted, replace them with a new ones.</li> </ul> </li> <li>2. Turn off the device, and then turn it on. Check if the battery-status light is flashing amber 10 times, indicating that the battery power is low. If the batteries are fully depleted, the battery-status light will not turn on.</li> <li>3. Restart your computer.</li> <li>4. Ensure that the USB receiver is directly connected to your computer. Avoid using the port replicators, USB hubs, and so on.</li> <li>5. Change the USB port or insert the USB receiver into another USB port on your computer.</li> <li>6. Ensure that the distance between your computer and keyboard/mouse is within 10 meters.</li> </ol>
Mouse pointer does not move	<ol style="list-style-type: none"> <li>1. Check the battery level. <ul style="list-style-type: none"> <li>• If the device uses the rechargeable batteries, ensure that the batteries are fully charged.</li> <li>• If the batteries are exhausted, replace them with a new ones.</li> </ul> </li> </ol>
Mouse left/right button does not work	<ul style="list-style-type: none"> <li>• If the batteries are exhausted, replace them with a new ones.</li> </ul>
Keyboard buttons do not work	<ol style="list-style-type: none"> <li>2. Turn off the device, and then turn it on. Check if the battery-status light is flashing amber 10 times, indicating that the battery power is low. If the batteries are fully depleted, the battery-status light will not turn on.</li> </ol>
Wireless connection is lost	<ol style="list-style-type: none"> <li>3. Restart your computer.</li> <li>4. Ensure that the distance between your computer and keyboard/mouse is within 10 meters.</li> </ol>



## Problems

## Possible solutions

---

Troubleshooting a slow moving cursor

1. Ensure that the sensor is not obstructed or dirty.
2. Glass or very smooth glossy surfaces are not suitable for the mouse sensor to capture the mouse movement. Using a dark colored fabric mouse pad can improve the tracking.
3. Change the mouse settings to adjust the pointer speed.

Click or tap the tab that matches the Operating System (OS) installed on your laptop/desktop and perform the steps within that section to change the settings.

- In the **Search** box, type `main.cpl`. The **Mouse Properties** dialog box appears.
  - Click or tap `main.cpl` in the list of programs.
  - Click or tap the **Pointer Options** tab. In the **Motion** section, move the slider to adjust the pointer speed to the desired level.
  - Click or tap **OK**.
- 



# Statutory Information

---

## Warranty

### Limited warranty and return policies

Dell-branded products carry a three-year limited hardware warranty. If purchased together with Dell system, it will follow the system warranty.

#### For U.S. customers:

This purchase and your use of this product are subject to Dell's end user agreement, which you can find at [Dell.com/terms](https://www.dell.com/terms). This document contains a binding arbitration clause.

#### For European, Middle Eastern and African customers:

Dell-branded products that are sold and used are subject to applicable national consumer legal rights, the terms of any retailer sale agreement that you have entered into (which will apply between you and the retailer) and Dell's end user contract terms.

Dell may also provide an additional hardware warranty – full details of the Dell end user contract and warranty terms can be found by going to [Dell.com/terms](https://www.dell.com/terms), selecting your country from the list at the bottom of the “home” page and then clicking the “terms and conditions” link for the end user terms or the “support” link for the warranty terms.

#### For non-U.S. customers:

Dell-branded products that are sold and used are subject to applicable national consumer legal rights, the terms of any retailer sale agreement that you have entered into (which will apply between you and the retailer) and Dell's warranty terms. Dell may also provide an additional hardware warranty – full details of Dell's warranty terms can be found by going to [Dell.com](https://www.dell.com), selecting your country from the list at the bottom of the “home” page and then clicking the “terms and conditions” link or the “support” link for the warranty terms.



Ovaj dokument je originalno proizveden i objavljen od strane proizvođača, brenda Dell, i preuzet je sa njihove zvanične stranice. S obzirom na ovu činjenicu, Tehnoteka ističe da ne preuzima odgovornost za tačnost, celovitost ili pouzdanost informacija, podataka, mišljenja, saveta ili izjava sadržanih u ovom dokumentu.

Napominjemo da Tehnoteka nema ovlašćenje da izvrši bilo kakve izmene ili dopune na ovom dokumentu, stoga nismo odgovorni za eventualne greške, propuste ili netačnosti koje se mogu naći unutar njega. Tehnoteka ne odgovara za štetu nanесenu korisnicima pri upotrebi netačnih podataka. Ukoliko imate dodatna pitanja o proizvodu, ljubazno vas molimo da kontaktirate direktno proizvođača kako biste dobili sve detaljne informacije.

Za najnovije informacije o ceni, dostupnim akcijama i tehničkim karakteristikama proizvoda koji se pominje u ovom dokumentu, molimo posetite našu stranicu klikom na sledeći link:

<https://tehnoteka.rs/p/dell-set-bezicni-mis-i-tastatura-km3322w-sryu-akcija-cena/>