

Uputstvo za upotrebu (EN)

DELL miš MS3220 sivi



Tehnoteka je online destinacija za upoređivanje cena i karakteristika bele tehnike, potrošačke elektronike i IT uređaja kod trgovinskih lanaca i internet prodavnica u Srbiji. Naša stranica vam omogućava da istražite najnovije informacije, detaljne karakteristike i konkurentne cene proizvoda.

Posetite nas i uživajte u ekskluzivnom iskustvu pametne kupovine klikom na link:

<https://tehnoteka.rs/p/dell-mis-ms3220-sivi-akcija-cena/>


Dell Laser Wired Mouse MS3220


User's Guide


Regulatory model: MS3220t



Notes, Cautions, and Warnings

 **NOTE:** A NOTE indicates important information that helps you make better use of your computer.

 **CAUTION:** A CAUTION indicates potential damage to hardware or loss of data if instructions are not followed.

 **WARNING:** A WARNING indicates a potential for property damage, personal injury, or death.

© 2020 Dell Inc. or its subsidiaries. All rights reserved. Dell, EMC, and other trademarks are trademarks of Dell Inc. or its subsidiaries. Other trademarks may be trademarks of their respective owners.

2020-03

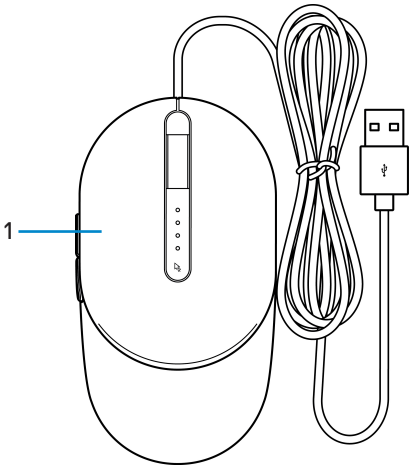
Rev. A01

Contents

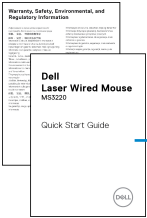
Notes, Cautions, and Warnings.....	2
What's in the box	4
Features	5
Top and side view	5
Bottom view	6
Dell Peripheral Manager	7
Setting up your mouse	8
Connecting the mouse.....	8
Adjusting the DPI.....	8
Specifications	10
General.....	10
Electrical	10
Physical characteristics.....	10
Environmental.....	11
Troubleshooting.....	12
Statutory Information.....	14
Warranty	14
Limited warranty and return policies	14
For U.S. customers:	14
For European, Middle Eastern and African customers:	14
For non-U.S. customers:	14



What's in the box



1 Mouse

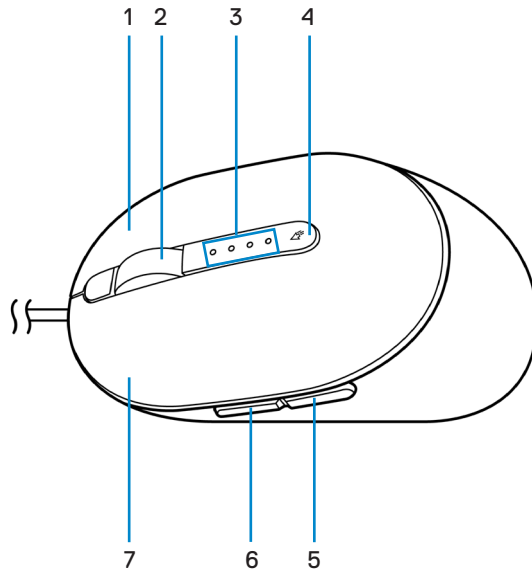


2 Documents



Features

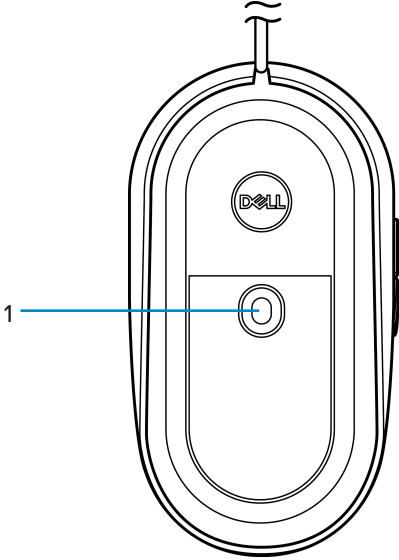
Top and side view



- | | |
|-------------------|-------------------------|
| 1 Right button | 2 Scroll wheel |
| 3 DPI indicators | 4 DPI adjustment button |
| 5 Backward button | 6 Forward button |
| 7 Left button | |



Bottom view



1 Laser sensor



Dell Peripheral Manager

Dell Peripheral Manager software enables you to perform the following:

- Assign program shortcuts to device programmable buttons or keys through the Action tab.
- View device information such as firmware version and battery status through the Info tab.
- Upgrade the latest firmware updates on your devices.
- Pair additional devices through the RF USB dongle or directly to your computer through Bluetooth.

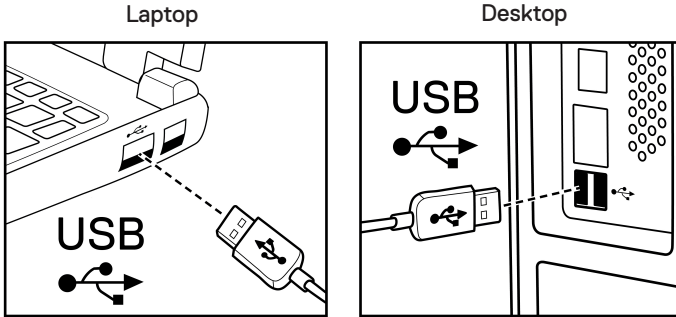
For more information, see *Dell Peripheral Manager User's Guide* on the product page at www.dell.com/support.



Setting up your mouse

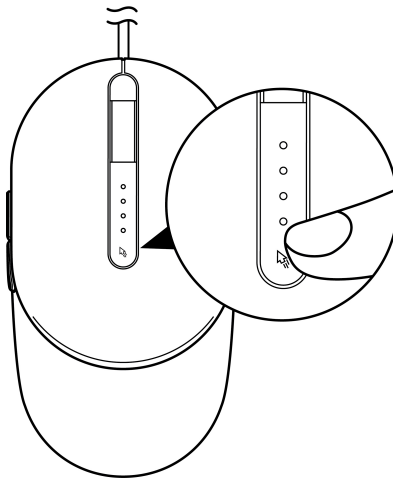
Connecting the mouse

Connect the mouse USB cable to an available USB A port on your laptop or desktop.

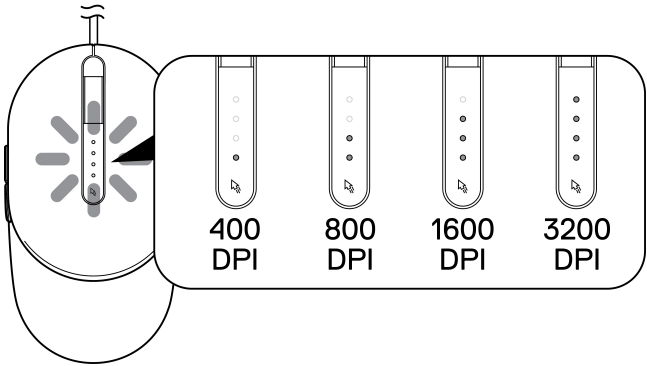


Adjusting the DPI

Press the DPI adjustment button repeatedly to toggle between mouse tracking resolutions.



DPI setting is indicated by the number of DPI indicator lights that are illuminated. The default four DPI settings and their indicator lights are as follows:



Specifications

General

Model number	MS3220
Connection type	Wired USB 2.0
Operating system	<ul style="list-style-type: none">• Chrome• Windows XP• Windows Vista (test only)• Windows 7, 32/64-bit• Windows 8, 32/64-bit• Windows 10, 32/64-bit• Windows Server 2003• Windows Server 2008; 2008 R2• Windows Server 2012; 2012 R2• Linux 6.x, Ubuntu, Neokylin• Free-DOS

Electrical

Operating voltage	DC 5 V, 0.1 A
-------------------	---------------

Physical characteristics

Weight (with cable)	< 120 g (< 0.26 lb)
Dimensions:	
Length	142 mm (5.59 in.)
Width	91 mm (3.58 in.)
Height	46.5 mm (1.83 in.)



Environmental

Temperature:

Operating

-10°C to 50°C (14°F to 122°F)

Storage

-40°C to 65°C (-40°F to 149°C)

Storage humidity

95% maximum relative humidity;
non-condensing



Troubleshooting

Problems	Possible solutions
Mouse is not functioning	<ol style="list-style-type: none">1 Connect the mouse USB cable to another USB port. A notification may appear indicating that the driver installation is in progress. If so, wait until a notification appears indicating that the drivers are installed before you use the mouse.2 Restart your computer.
Resolving cursor issues	<ol style="list-style-type: none">1 Connect the mouse USB cable to another USB port. A notification may appear indicating that the driver installation is in progress. If so, wait until a notification appears indicating that the drivers are installed before you use the mouse.2 Ensure that the laser sensor is not obstructed or dirty.3 Glass or other very smooth glossy surfaces are not suitable for the mouse sensor to capture movement. Using a dark colored fabric mouse pad can improve the tracking.4 Save any data, close any open program(s), and then restart your laptop/desktop. When you do not have another mouse or touchscreen, you may have to hold the power button for at least 15 seconds to turn your laptop/desktop off. You may lose any unsaved data.
Resolving mouse button issues	<ol style="list-style-type: none">1 Ensure that there is nothing preventing the mouse buttons from moving.2 Connect the mouse USB cable to another USB port. A notification may appear indicating that the driver installation is in progress. If so, wait until a notification appears indicating that the drivers are installed before you use the mouse.3 Save any data, close any open program(s), and then restart your laptop/desktop. When you do not have another mouse or touchscreen, you may have to hold the power button for at least 15 seconds to turn your laptop/desktop off. You may lose any unsaved data.4 In Dell Peripheral Manager, reset the side button actions to their factory defaults.



Solving a slow
moving cursor

- 1 Ensure that the laser sensor is not obstructed or dirty.
- 2 Modify the mouse DPI setting.
- 3 Change the mouse settings to adjust the pointer speed.
Click on the tab that matches the Operating System (OS) installed on your laptop/desktop and perform the steps within that section to change the settings.
 - In the **Search** box, type `main.cpl`.
 - Click or tap `main.cpl` in the list of programs.
 - Move the slider under **Select a Pointer Speed** to adjust the cursor speed to the desired level.
 - Click or tap **OK**.



Statutory Information

Warranty

Limited warranty and return policies

Dell-branded products carry a three-year limited hardware warranty. If purchased together with Dell system, it will follow the system warranty.

For U.S. customers:

This purchase and your use of this product are subject to Dell's end user agreement, which you can find at [Dell.com/terms](https://www.dell.com/terms). This document contains a binding arbitration clause.

For European, Middle Eastern and African customers:

Dell-branded products that are sold and used are subject to applicable national consumer legal rights, the terms of any retailer sale agreement that you have entered into (which will apply between you and the retailer) and Dell's end user contract terms.

Dell may also provide an additional hardware warranty – full details of the Dell end user contract and warranty terms can be found by going to [Dell.com/terms](https://www.dell.com/terms), selecting your country from the list at the bottom of the “home” page and then clicking the “terms and conditions” link for the end user terms or the “support” link for the warranty terms.

For non-U.S. customers:

Dell-branded products that are sold and used are subject to applicable national consumer legal rights, the terms of any retailer sale agreement that you have entered into (which will apply between you and the retailer) and Dell's warranty terms. Dell may also provide an additional hardware warranty – full details of Dell's warranty terms can be found by going to

[Dell.com](https://www.dell.com), selecting your country from the list at the bottom of the “home” page and then clicking the “terms and conditions” link or the “support” link for the warranty terms.



Ovaj dokument je originalno proizveden i objavljen od strane proizvođača, brenda Dell, i preuzet je sa njihove zvanične stranice. S obzirom na ovu činjenicu, Tehnoteka ističe da ne preuzima odgovornost za tačnost, celovitost ili pouzdanost informacija, podataka, mišljenja, saveta ili izjava sadržanih u ovom dokumentu.

Napominjemo da Tehnoteka nema ovlašćenje da izvrši bilo kakve izmene ili dopune na ovom dokumentu, stoga nismo odgovorni za eventualne greške, propuste ili netačnosti koje se mogu naći unutar njega. Tehnoteka ne odgovara za štetu nanесenu korisnicima pri upotrebi netačnih podataka. Ukoliko imate dodatna pitanja o proizvodu, ljubazno vas molimo da kontaktirate direktno proizvođača kako biste dobili sve detaljne informacije.

Za najnovije informacije o ceni, dostupnim akcijama i tehničkim karakteristikama proizvoda koji se pominje u ovom dokumentu, molimo posetite našu stranicu klikom na sledeći link:

<https://tehnoteka.rs/p/dell-mis-ms3220-sivi-akcija-cena/>