

Uputstvo za upotrebu

SENCOR ručni mikser SHM 5203-EUE3

SENCOR



Tehnoteka je online destinacija za upoređivanje cena i karakteristika bele tehnike, potrošačke elektronike i IT uređaja kod trgovinskih lanaca i internet prodavnica u Srbiji. Naša stranica vam omogućava da istražite najnovije informacije, detaljne karakteristike i konkurentne cene proizvoda.

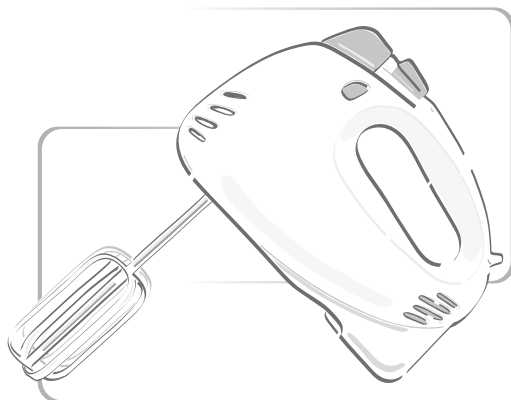
Posetite nas i uživajte u ekskluzivnom iskustvu pametne kupovine klikom na link:

<https://tehnoteka.rs/p/sencor-rucni-mikser-shm-5203-eue3-akcija-cena/>

Hand Mixer

USER'S MANUAL

EN



SENCOR®

SHM 5203

Prior to using this appliance, please read the user's manual thoroughly, even in cases, when one has already familiarised themselves with previous use of similar types of appliances. Use the appliance only as described in this user's manual. Store the user's manual in a safe place where it can be easily retrieved in case of future need.

We recommend saving the original shipping cardboard box, packaging material, receipt and warranty for the period of the warranty at minimum. In case of transportation, pack the product using the original packaging materials only.

CONTENTS

IMPORTANT SAFETY INSTRUCTIONS.....	3
DESCRIPTION OF APPLIANCE.....	6
USE OF APPLIANCE.....	7
ADAPTOR FOR KNEADING.....	7
ADAPTOR FOR BEATING.....	8
SELECTION OF SPEED.....	8
IMPORTANT ADVICE.....	8
QUANTITY AND DURATION OF PROCESS.....	8
MAINTENANCE AND CLEANING.....	9
TECHNICAL SPECIFICATIONS.....	9
INSTRUCTIONS AND INFORMATION REGARDING THE DISPOSAL OF USED PACKAGING MATERIALS.....	10
DISPOSAL OF USED ELECTRICAL AND ELECTRONIC APPLIANCES.....	10

IMPORTANT SAFETY INSTRUCTIONS

READ CAREFULLY AND SAVE FOR FUTURE USE

- This appliance is not intended for use by persons (including children) with reduced physical, sensory or mental capabilities, or lack of experience and knowledge, unless they have been given supervision or instruction concerning use of the appliance by a person responsible for their safety.
- Children should be supervised to ensure that they will not play with the appliance.
- Before connecting the appliance to the power point, make sure the voltage stated on the label corresponds with the voltage in your power point.
- Never use accessories which have not been provided with this appliance or not specifically recommended for this appliance.
- Do not place the appliance on window sills or instable surfaces. Always place the appliance on a flat, dry surface.
- Make sure the electric cable and the electric plug can not come into contact with water or dampness.
- Do not spray the appliance with water or any other liquid. Never rinse the motor unit under running water nor submerge it under water or any other liquid.
- The appliance is designed for processing regular quantities of food in the household.
- Do not use the appliance for other purposes than it is intended for.
- Do not use the appliance in an industrial environment, or outdoors.
- Do not use sprays in the near vicinity of the appliance.
- Prior to first use, it is necessary to thoroughly rinse the kneading and mixing adaptors under hot water using dish detergent.

Then rinse with drinking water and thoroughly dry with a soft tea towel.

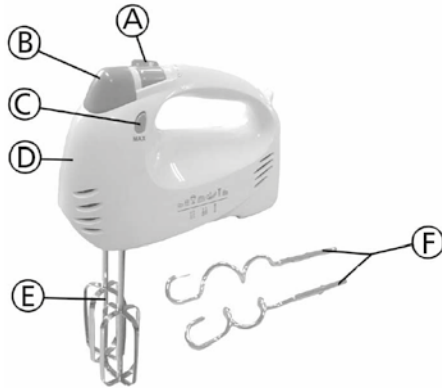
- Always turn off the appliance and remove it from the electric socket, provided it will not be used and if it will be left without attendance, prior to assembly, disassembly or cleaning.
- Before attaching the kneading or mixing adaptor to the appliance, their removal or exchange, always make sure the appliance is turned off and removed from the electric socket.
- Before turning on the appliance, always make sure the beating or kneading adaptor is properly attached.
- Once the kneading or mixing adaptors are properly attached to the appliance, firstly submerge them into the bowl with the ingredients and only then turn the appliance on.
- Do not turn the appliance on, on empty. Incorrect use may adversely affect the operation life of the appliance.
- Do not allow children to use the appliance without supervision. When the appliance is not being used, store it away from the reach of children. In case the appliance gets into the hands of a child without adult supervision, this may lead to the injury of the child or the damage of the appliance.
- Do not place the appliance on or near to electric, or gas cookers, do not place it near an open fire and other appliances or devices, which are a source of heat.
- In case the electric cable is damaged, have it replaced by an expert service. Do not use the appliance if it has a damaged electric cable/electric cable plug.
- In no case should you attempt to repair the appliance yourself, do not make any amends yourself - danger of electric shock! Entrust a specialised company/service with all repairs and

alignment of this appliance. Failure to do so will void the warranty policy.

- Do not place the electric cable of the appliance near hot surfaces, or over sharp objects. Do not place heavy objects on the cable, position the cable so that it is not stepped on, or tripped over. Make sure the power cable does not hang over the edge of a table, or that it does not touch a hot surface.
- Do not disconnect the appliance from the power point by pulling the electric cable - it may damage the electric cable/power point. Disconnect the cable from the power point by gently pulling the plug of the electric cable.

DESCRIPTION OF THE APPLIANCE

A



- A** – switch for turning off and setting the speed
- B** – button for releasing the kneading/mixing adaptors
- C** – MAX switch for max. speed

- D** – motor unit/motor cover
- E** – set of adaptors for beating
- F** – set of adaptors for kneading

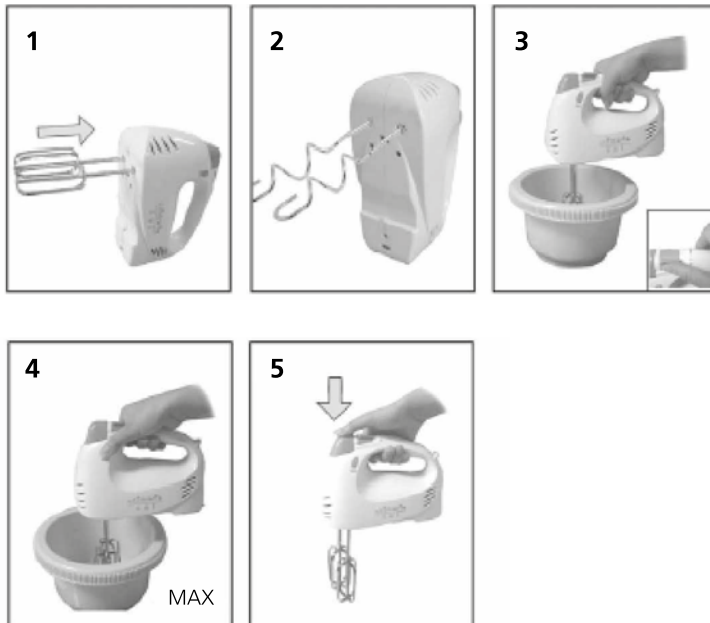
Hand Mixer

SHM 5203

EN

Use of appliance

1. To set up the appliance, insert the end of the mixing adaptor into the opening (see picture 1). Press the adaptor in, until it clicks into the secured position. (Note: It is necessary to proceed accordingly when attaching the adaptor for kneading. Insert the adaptor for kneading with two handles into the right opening, insert the adaptor for kneading with a loop into the left opening (see picture 2).
2. Add the ingredients to the bowl.
3. Submerge the mixing or kneading adaptor into the bowl with ingredients (see picture 3).
4. Connect the electric cable of the appliance into the power point, turn on the appliance and select the desired speed (see picture 3). While mixing, do not place objects into the bowl such as a kitchen knife, or fork. This could lead to injury or damage to the appliance.
5. If you would like to mix using the highest speed, press the MAX button (see picture 4).
6. When finished using it, shift the switch into the 0 position and remove the cable from the power point. Press the button to release the adaptors (B) to release the beating, or the kneading adaptors (see picture 5). It is possible to release the adaptor only once the switch is in 0 position. If the switch is positioned between 1-5, the adaptors are blocked from release. To whip, mix, or knead, always use the same type of adaptor. It is not possible to combine the kneading and mixing adaptors.



Adaptor for kneading

Use for kneading yeast dough, batter and pasta dough, to mix minced meat, spreads, or puff pastry.

Adaptor for mixing

Use for preparing batter, sponge cake dough, mashed potatoes, to whip whipped cream, to beat egg whites, cream.

Selection of speed

0 – OFF

Degree 1 – suitable for the initial speed for mixing a larger amount of food, or dry foods such as flour, butter and potato

Degree 2 – suitable for processing liquid ingredients, for mixing salad dressings

Degree 3 – suitable for mixing ingredients for preparing pies, cookies and bread

Degree 4 – suitable for beating butter and sugar for cookie preparations, desserts, etc.

Degree 5 – suitable for beating eggs, icings, creams, etc.

MAX – max. speed

Note: This button only works if the appliance is in use and is set on degrees of speed 1-4.

IMPORTANT ADVICE!

After 5 minutes of continuous use, the appliance must be turned off for a few minutes. The maximum non-stop use of the appliance is 10 mins. The highest speed of the mixing, kneading adaptors is 1200 rpm.

Quantity and duration of process

Adaptor for kneading e	Quantity	Duration of process	Selection of speed
Yeast dough	max. 500 g of flour	max. 5 minutes	Degree 3

Adaptor for mixing	Quantity	Duration of process	Selection of speed
Thin sauces, creams and soups	approx. 750 g	approx. 3.5 minutes	Degree 2
Mayonnaise	max. 3 egg yolks	approx. 2 minutes	Degree 5
Mashed potato	max. 750 g	max. 3.5 minutes	Degree 4
Whipping whipped cream	max. 500 g	max. 5 minutes	Degree 5
Beating egg whites	max. 5 egg whites	approx. 3.5 minutes	Degree 5
Pie pastry	approx. 750 g	approx. 3.5 minutes	Degree 3

Beat first of all on a low speed to keep the dough from spirting. Only then can you change to a higher speed. For easier mixing and kneading, we recommend using soft margarine or butter.

Maintenance and cleaning

Prior to cleaning the appliance, always turn it off by shifting the switch into the 0 position and remove it from the power point.

Following each use of the mixing or kneading adaptors, it is necessary to thoroughly rinse the adaptors with hot water and to use dish detergent. Then rinse with drinking water and thoroughly dry with a soft tea towel. The kneading and mixing adaptors are designed for short contact with food (including drinks), i.e. max. 4 hours.

To clean the motor unit/cover of the motor use a cloth slightly moistened in a weak solution of dish detergent. Never submerge the motor unit under water, or any other liquids!

To clean the appliance, do not use thinners or solvents, such as cleaning agents causing abrasion - they may damage the surface.

Should you not use the appliance, store it in a dry place away from the reach of children. To store the appliance, you can (once it has been disassembled) use its transport cardboard box.

Technical specifications

SHM 5203

230 V ~ 50 Hz, 400 W

Protection class: II

Noise level: 68 dB(A)

The declared noise emission level for this appliance is 68 dB(A), which represents level A of the acoustic power relative to the reference acoustic power of 1 pW.

INSTRUCTIONS AND INFORMATION REGARDING THE DISPOSAL OF USED PACKAGING MATERIALS

Dispose of packaging material at a public waste disposal site.

DISPOSAL OF USED ELECTRICAL AND ELECTRONIC APPLIANCES



The meaning of the symbol on the product, its accessory or packaging indicates that this product shall not be treated as household waste. Please, dispose of this product at your applicable collection point for the recycling of electrical & electronic equipment waste. Alternatively in some states of the European Union or other European states you may return your products to your local retailer when buying an equivalent new product. The correct disposal of this product will help save valuable natural resources and help in preventing the potential negative impact on the environment and human health, which could be caused as a result of improper liquidation of waste. Please ask your local authorities or the nearest

waste collection centre for further details. The improper disposal of this type of waste may fall subject to national regulations for .

For business entities in the European Union

If you wish to dispose of an electrical or electronic device, request the necessary information from your seller or supplier.

Disposal in other countries outside the European Union

If you wish to dispose of this product, request the necessary information about the correct disposal method from local government departments or from your seller.



This product meets all the basic EU regulation requirements that relate to it.

Changes to the text, design and technical may occur without prior notice and we reserve the right to make these changes.

Ovaj dokument je originalno proizveden i objavljen od strane proizvođača, brenda Sencor, i preuzet je sa njihove zvanične stranice. S obzirom na ovu činjenicu, Tehnoteka ističe da ne preuzima odgovornost za tačnost, celovitost ili pouzdanost informacija, podataka, mišljenja, saveta ili izjava sadržanih u ovom dokumentu.

Napominjemo da Tehnoteka nema ovlašćenje da izvrši bilo kakve izmene ili dopune na ovom dokumentu, stoga nismo odgovorni za eventualne greške, propuste ili netačnosti koje se mogu naći unutar njega. Tehnoteka ne odgovara za štetu nanесenu korisnicima pri upotrebi netačnih podataka. Ukoliko imate dodatna pitanja o proizvodu, ljubazno vas molimo da kontaktirate direktno proizvođača kako biste dobili sve detaljne informacije.

Za najnovije informacije o ceni, dostupnim akcijama i tehničkim karakteristikama proizvoda koji se pominje u ovom dokumentu, molimo posetite našu stranicu klikom na sledeći link:

<https://tehnoteka.rs/p/sencor-rucni-mikser-shm-5203-eue3-akcija-cena/>