

## Uputstvo za upotrebu (EN)

PHILIPS slušalice TAT1215BK/10

**PHILIPS**



Tehnoteka je online destinacija za upoređivanje cena i karakteristika bele tehnike, potrošačke elektronike i IT uređaja kod trgovinskih lanaca i internet prodavnica u Srbiji. Naša stranica vam omogućava da istražite najnovije informacije, detaljne karakteristike i konkurentne cene proizvoda.

Posetite nas i uživajte u ekskluzivnom iskustvu pametne kupovine klikom na link:

<https://tehnoteka.rs/p/philips-slusalice-tat1215bk10-akcija-cena/>

# PHILIPS

## Headphones

### 1000 Series

TAT1215



# User manual

Register your product and get support at  
[www.philips.com/support](http://www.philips.com/support)

# Contents

---

1	Important safety instructions	2
	Hearing Safety	2
	General information	2

---

2	Your True wireless earphones	3
	What's in the box	3
	Other devices	3
	Overview of your True wireless earphones	4

---

3	Get started	5
	Charge the battery	5
	Pair the earphones with your Bluetooth device for the first time	5
	Pair the earphones with another Bluetooth device	6

---

4	Use your earphones	8
	Connect the earphones to your Bluetooth device	8
	Power on/off	8
	Manage your calls and music	8
	LED indicator status	9
	Voice Assistant	9

---

5	Reset the earphones	10
---	---------------------	----

---

6	Technical data	10
---	----------------	----

---

7	Notice	11
	Declaration of conformity	11
	Disposal of your old product and battery	11
	Remove the integrated battery	11
	Compliance with EMF	12
	Environmental information	12
	Notice of compliance	12

---

8	Trademarks	14
---	------------	----

---

9	Frequently asked questions	15
---	----------------------------	----

# 1 Important safety instructions

## Hearing safety



### Danger

- To avoid hearing damage, limit the time you use headphones at high volume and set the volume to a safe level. The louder the volume, the shorter the safe listening time is.

Be sure to observe the following guidelines when using your headphones.

- Listen at reasonable volumes for reasonable periods of time.
- Be careful not to adjust the volume continuously upwards as your hearing adapts.
- Do not turn up the volume so high that you can't hear what's around you.
- You should use caution or temporarily discontinue use in potentially hazardous situations.
- Excessive sound pressure from earpieces and headphones can cause hearing loss.
- Using headphones with both ears covered while driving is not recommended and may be illegal in some areas.
- For your safety, avoid distractions from music or phone calls while in traffic or other potentially dangerous environments.

## General information

To avoid damage or malfunction:

### Caution

- Do not expose headphones to excessive heat.
- Do not drop your headphones.
- Headphones shall not be exposed to dripping or splashing. (Refer to the IP rating of specific product)
- Do not allow your headphones to be submerged in water.
- Do not charge your headphones when the connector or socket is wet.
- Do not use any cleaning agents containing alcohol, ammonia, benzene, or abrasives.
- If cleaning is required, use a soft cloth, if necessary dampened with a minimum amount of water or diluted mild soap, to clean the product.
- The integrated battery shall not be exposed to excessive heat such as sunshine, fire or the like.
- Danger of explosion if battery is incorrectly replaced. Replace only with the same or equivalent type.
- To achieve the specific IP rating, the charging slot cover must be closed.
- Disposal of a battery into fire or a hot oven, or mechanically crushing or cutting a battery, can result in an explosion.
- Leaving a battery in an extremely high temperature surrounding environment can result in an explosion or the leakage of flammable liquid or gas.
- A battery subjected to extremely low air pressure may result in an explosion or the leakage of flammable liquid or gas.

### Operating and storage temperatures and humidity

- Store in a place where the temperature is between  $-20^{\circ}\text{C}$  ( $-4^{\circ}\text{F}$ ) and  $50^{\circ}\text{C}$  ( $122^{\circ}\text{F}$ ) with up to 90% relative humidity.
- Operate in a place where the temperature is between  $0^{\circ}\text{C}$  ( $32^{\circ}\text{F}$ ) and  $45^{\circ}\text{C}$  ( $113^{\circ}\text{F}$ ) with up to 90% relative humidity.
- Battery life may be shorter in high or low temperature conditions.
- Replacement of a battery with an incorrect type risks severely damaging the headphones and the battery (for example, in the case of some lithium battery types).

# 2 Your True wireless earphones

Congratulations on your purchase, and welcome to Philips! To fully benefit from the support that Philips offers, register your product at [www.philips.com/support](http://www.philips.com/support). With this Philips True wireless earphones, you can:

- enjoy convenient wireless handsfree calls;
- enjoy and control wireless music;
- switch between calls and music.



Quick start guide



Global Warranty



Safety leaflet

---

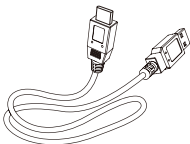
## What's in the box



Philips True wireless earphones  
Philips TAT1215



Replaceable rubber ear caps x 2 pairs



Micro USB charging cable  
(for charging only)

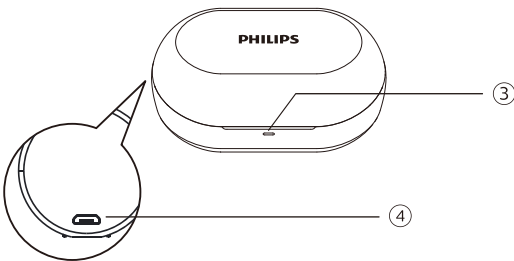
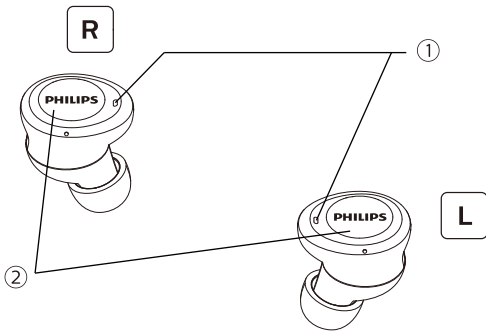
---

## Other devices

A mobile phone or device (e.g. notebook, tablet, Bluetooth adapters, MP3 players etc) which supports Bluetooth and is compatible to the earphones.

---

## Overview of your True wireless earphones



- ① LED indicator (earpieces)
- ② Multi-function button
- ③ LED indicator (charging box)
- ④ Micro USB charging slot

# 3 Get started

## Charge the battery

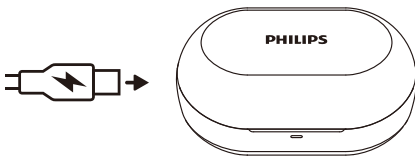
### Note

- Before you use your earphones for the first time, place the earpieces in the charging box and charge the battery for 2 hours for optimum battery capacity and lifetime.
- Use only the original USB charging cable to avoid any damage.
- Finish your call before charging the earpieces, as connecting the earpieces for charging will power the earpieces off.

## Charging

Connect one end of the USB cable into the charging box, and another end into the power source.

- ↳ The charging box starts charging.
  - Charging process is verified by the LED light. The red light flashes on the front panel.
  - When the charging box is fully charged, the red light goes on.



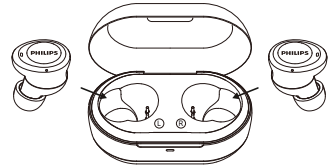
### Tip

- The charging box serves as a portable backup battery for charging the earpieces.

## Earpieces

Place the earpieces in the charging case.

- ↳ The earpieces start charging.
  - Charging process is verified by white LED light on the earpieces.
  - When the earpieces are fully charged, the white light goes off.

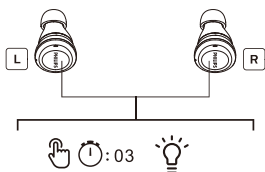


### Tip

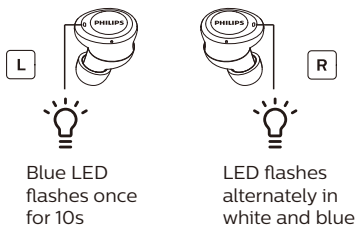
- Normally, a full charge takes 2 hours (for the earpieces or charging case).

## Pair the earphones with your Bluetooth device for the first time

- 1 Make sure that the earphones are fully charged.
- 2 Auto power on: open the top cover from charging box, the earpieces discharged and the blue LED indicator flashes for 3 times with “power on” voice prompt; Manual power on: on both earpieces press and hold the multi-function buttons for approximately 3s.



- ↳ The right earpiece LED flashes alternately in white and blue, and the left earpiece LED is off for 10s and the blue LED flashes once.
- ↳ Both earpieces are now power on and are paired with each other.
- ↳ The earpieces are now in pairing mode and are ready to pair with a Bluetooth device (e.g. a mobile phone)



- 3 Turn on the Bluetooth function of your Bluetooth device.
- 4 Pair the earpieces with your Bluetooth device. Refer to the user manual of your Bluetooth device.
  - ↳ In right earpiece, it has voice “Connected” and LED goes off on both earpieces and flashes once every 10s. You can use your device to play music or make calls.

### Note

- After powering on, if the earphones cannot find any previously connected Bluetooth device, it will automatically switch to pairing mode.

The following example shows how to pair the earphones with your Bluetooth device.

- 1 Turn on the Bluetooth function of your Bluetooth device, select **Philips TAT1215**.
- 2 Enter the earphones password “0000” (4 zeros) if prompted. For those Bluetooth devices featuring Bluetooth 3.0 or higher, no need to enter a password.



Philips TAT1215



---

## Single earpiece (Mono mode)

Take either right or left earpiece out from charging box for mono use. The earpiece will power on automatically. There will be a voice “power on” from earpiece.



### Note

- Put both L and R earpieces back into power case and then take the 2 earpieces out to pair and connect Bluetooth again.
- If still not works, try to reset. Put L and R into power case and press the button for 4 seconds until the white LED flashes. Then take L and R out of power case and select BT, connect Bluetooth again.

---

## Pair the earphones with another Bluetooth device

If you have another Bluetooth device that you want to pair with the earphones, make sure the Bluetooth function in any other previously paired or connected devices are turned off. Then follow the steps in “Pair the earpieces with your Bluetooth device for the first time”.



### Note

- The earphones store 1 device in the memory. If you try to pair more than 2 devices, the earliest paired device is replaced by the new one.

# 4 Use your earphones

## Connect the earphones to your Bluetooth device

- 1 Turn on the Bluetooth function of your Bluetooth device.
- 2 Take both earpieces from charging box.
  - ↳ If no device is connected, the earpieces will automatically turn off after 5 mins.
  - ↳ Both earpieces are now powered on and are paired with each other automatically.
  - ↳ The earphones will search the last connected Bluetooth device and reconnect to it automatically. If the last connected device is not available, the earphones will enter pairing mode.



### Tip

- The earphones cannot connect to more than 1 device at the same time. If you have two paired Bluetooth devices, only turn on the Bluetooth function of the device that you want to connect.
- If you turn on the Bluetooth function of your Bluetooth device after turning on the earphones, you have to go to the Bluetooth menu of the device and connect the earphones to the device manually.



### Note

- If the earphones fail to connect to any Bluetooth device within 5 minutes, it will turn off automatically to save the battery life.
- In some Bluetooth devices, connection may not be automatic. In this case, you have to go to the Bluetooth menu of your device and connect the earphones to the Bluetooth device manually.

## Power on/off

Task	Multifunction button	Operation
Turn the earphones on	Right and left earpiece	Take both earpieces from the charging case or press and hold for 3s
Turn the earphones off	Right and left earpiece	Put back both earpieces to charging box and close the lid. Or press and hold for 5s

## Manage your calls and music

### Music control

Task	Multifunction button	Operation
Play or pause music	Right or left earpiece	Single tap
Skip forward	Right earpiece	Press and hold for 2s
Backward	Left earpiece	Press and hold for 2s
Adjust volume +/-		Via mobile phone control

## Call control

Task	Multifunction button	Operation
Pick up / hang up call	Right or left earpiece	Single tap
Reject an incoming call	Right or left earpiece	Press and hold 1s

## Voice control

Task	Button	Operation
Trigger Voice (Siri/Google) Assistant	Right or left earpiece	Press twice

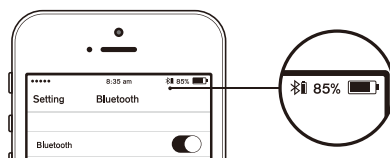
## LED indicator status

Earpieces status	Indicator
The earpieces are connected to a Bluetooth device.	The white LED light goes off and blue light flashes once every 10s
The earpieces are ready for pairing	The blue & white LED flash alternately
The earpieces are on but not connected to a Bluetooth device	The blue and white LED flashes. If no connection can be made, the earpieces will turn off within 5 mins
Low battery level (earpieces)	You will hear "battery low" on the earpieces. The white LED flashes twice

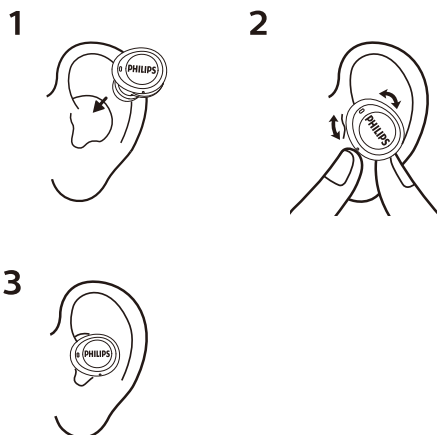
Earpieces are fully charged	The LED in charging case flashes
Charging case is fully charged	The red LED is lightening

## Battery LED indicator on Bluetooth device

A battery indicator will be shown on the screen when connected to headphones or another Bluetooth device (refer to mobile phone's operation manual).



## How to wear



## 5 Reset the earphones

If you encounter any pairing or connection issue, you can follow the following procedure to reset your earpieces.

- 1 On your Bluetooth device, go to the Bluetooth menu and remove **Philips TAT1215** from the device list.
- 2 Turn off the Bluetooth function of your Bluetooth device.
- 3 Put both earpieces back to charging case. Both earpieces flash white LED. Press and hold both earpieces function button for 4s until earpieces flash twice white LED.
- 4 To pair the earphones with your Bluetooth device, turn on the Bluetooth function of your Bluetooth device, select **Philips TAT1215**.

## 6 Technical data

### Earpieces

- Music time: 6 hours
- Talk time: 4 hours
- Standby time — 50 hours
- Charging time: 1.5 hours
- Rechargeable lithium ion battery 55 mAh on each earpiece
- Bluetooth version: 5.1
- Compatible Bluetooth profiles:
  - HFP (Hands-Free Profile)
  - A2DP (Advanced Audio Distribution Profile)
  - AVRCP (Audio Video Remote Control Profile)
- Supported audio codec: SBC
- Frequency range: 2.402-2.480GHz
- Transmitter power: < 9 dBm
- Operating range: Up to 10 meters (33 feet)
- Auto power off
- Micro USB port for charging
- Low battery warning: available

### Charging case

- Charging time: 2 hours
- Rechargeable lithium ion battery: 320 mAh



### Note

- Specifications are subject to change without notice.

# 7 Notice

## Declaration of conformity

Hereby, MMD Hong Kong Holding Limited declares that this product is in compliance with the essential requirements and other relevant provisions of Directive 2014/53/EU. You can find the Declaration of Conformity on [www.p4c.philips.com](http://www.p4c.philips.com).

## Disposal of your old product and battery



Your product is designed and manufactured with high quality materials and components which can be recycled and reused.



This symbol on a product means that the product is covered by European Directive 2012/19/EU.

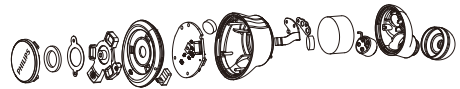


This symbol means that the product contains a built-in rechargeable battery covered by European Directive 2013/56/EU which cannot be disposed of with normal household waste. We strongly advise you to take your product to an official collection point or a Philips service centre to have a professional remove the rechargeable battery. Inform yourself about the local separate collection system for electrical and electronic products and rechargeable batteries. Follow local rules and never dispose of the product and rechargeable batteries with normal household waste. Correct disposal of old products and rechargeable batteries helps prevent negative consequences for the environment and human health.

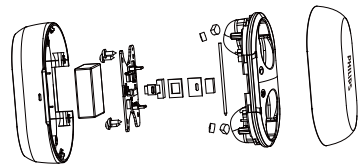
## Remove the integrated battery

If there is no collection/recycling system for electronic products in your country, you can protect the environment by removing and recycling the battery before disposing of the earpieces.

- Make sure the earpieces are disconnected from the charging box before removing the battery.



- Make sure the charging box is disconnected from the USB charging cable before removing the battery.



---

## Compliance with EMF

This product complies with all applicable standards and regulations regarding exposure to electromagnetic fields.

---

## Environmental information

All unnecessary packaging has been omitted. We have tried to make the packaging easy to separate into three materials: cardboard (box), polystyrene foam (buffer) and polyethylene (bags, protective foam sheet.)

Your system consists of materials which can be recycled and reused if disassembled by a specialized company. Please observe the local regulations regarding the disposal of packaging materials, exhausted batteries and old equipment.

---

## Notice of compliance

The device complies with the FCC rules, Part 15. Operation is subject to the following two conditions:

1. This device may not cause harmful interference, and
2. This device must accept any interference received, including interference that may cause undesired operation.

### FCC rules

This equipment has been tested and found to comply with the limits for a Class B digital device, pursuant to part 15 of the FCC Rules. These limits are designed to provide reasonable protection against harmful interference in a residential installation. This equipment generates, uses and can radiate radio frequency energy and,

if not installed and used in accordance with the instruction manual, may cause harmful interference to radio communications.

However, there is no guarantee that interference will not occur in a particular installation. If this equipment does cause harmful interference to radio or television reception, which can be determined by turning the equipment off and on, the user is encouraged to try to correct the interference by one or more of the following measures:

- Reorient or relocate the receiving antenna
- Increase the separation between equipment and receiver
- Connect the equipment into an outlet on a circuit different from that to which the receiver is connected
- Consult the dealer or an experienced radio/TV technician for help

### FCC Radiation Exposure Statement:

This equipment complies with FCC radiation exposure limits set forth for an uncontrolled environment.

This transmitter must not be co-located or operated in conjunction with any other antenna or transmitter.

**Caution:** The user is cautioned that changes or modifications not expressly approved by the party responsible for compliance could void the user's authority to operate the equipment.

### Canada:

This device contains licence-exempt transmitter(s)/receiver(s) that comply with Innovation, Science and Economic Development Canada's license-exempt RSS(s). Operation is subject to the following two conditions: (1) This device may not cause interference. (2) This device must accept any interference, including interference that may cause undesired operation of the device.

L'émetteur/récepteur exempt de licence contenu dans le présent appareil est conforme aux CNR d'Innovation, Sciences et Développement économique Canada applicables aux appareils radio exempts de licence. L'exploitation est autorisée aux deux conditions suivantes : (1) L'appareil ne doit pas produire de brouillage; (2) L'appareil doit accepter tout brouillage radioélectrique subi, même si le brouillage est susceptible d'en compromettre le fonctionnement.  
CAN ICES-3(B)/NMB-3(B)

**IC Radiation Exposure Statement:**

This equipment complies with Canada radiation exposure limits set forth for uncontrolled environments. This transmitter must not be co-located or operated in conjunction with any other antenna or transmitter.

# 8 Trademarks

---

## Bluetooth

The Bluetooth® word mark and logos are registered trademarks owned by Bluetooth SIG, Inc. and any use of such marks by MMD Hong Kong Holding Limited is under license. Other trademarks and trade names are those of their respective owners.

---

## Siri

Siri is a trademark of Apple Inc., registered in the U.S. and other countries.

---

## Google

Google and Google Play are trademarks of Google LLC.



## 9 Frequently asked questions

### **My Bluetooth earpieces do not turn on.**

The battery level is low. Charge the earpieces.

### **I cannot pair my Bluetooth earpieces with my Bluetooth device.**

The Bluetooth is disabled. Enable the Bluetooth feature on your Bluetooth device and turn on the Bluetooth device before you turn on the earpieces.

### **Pairing does not work.**

- Put both earpieces into charging box.
- Make sure you have disabled the Bluetooth function of any previously connected Bluetooth devices.
- On your Bluetooth device, delete “Philips TAT1215” from the Bluetooth list.
- Pair your earpieces (see ‘Pair the earpieces with your Bluetooth device for the first time’ on page 6).

### **The Bluetooth device cannot find the earpieces.**

- The earpieces may be connected to a previously paired device. Turn off the connected device or move it out of range.
- Pairing may have been reset or the earpieces have been previously paired with another device. Pair the earpieces with the Bluetooth device again as described in the user manual. (see ‘Pair the earpieces with your Bluetooth device for the first time’ on page 6).

### **My Bluetooth earpieces are connected to a Bluetooth stereo-enabled mobile phone, but music only plays on the mobile phone speaker.**

Refer to the user manual of your mobile phone. Select to listen to music through the earpieces.

### **The audio quality is poor and a crackling noise can be heard.**

- The Bluetooth device is out of range. Reduce the distance between your earpieces and Bluetooth device, or remove obstacles between them.
- Charge your earpieces.

### **The audio quality is poor when streaming from a mobile phone is very slow or streaming does not work at all.**

Make sure your mobile phone not only supports (mono) HFP but also supports A2DP and is BT4.0x (or higher) compatible (see ‘Technical data’ on page 10).



2021 © MMD Hong Kong Holding Limited. All rights reserved. Specifications are subject to change without notice. Philips and the Philips Shield Emblem are registered trademarks of Koninklijke Philips N.V. and are used under license. This product has been manufactured by and is sold under the responsibility of MMD Hong Kong Holding Limited or one of its affiliates, and MMD Hong Kong Holding Limited is the warrantor in relation to this product. All other company and product names may be trademarks of its respective companies with which they are associated.



Ovaj dokument je originalno proizveden i objavljen od strane proizvođača, brenda Philips, i preuzet je sa njihove zvanične stranice. S obzirom na ovu činjenicu, Tehnoteka ističe da ne preuzima odgovornost za tačnost, celovitost ili pouzdanost informacija, podataka, mišljenja, saveta ili izjava sadržanih u ovom dokumentu.

Napominjemo da Tehnoteka nema ovlašćenje da izvrši bilo kakve izmene ili dopune na ovom dokumentu, stoga nismo odgovorni za eventualne greške, propuste ili netačnosti koje se mogu naći unutar njega. Tehnoteka ne odgovara za štetu nanесenu korisnicima pri upotrebi netačnih podataka. Ukoliko imate dodatna pitanja o proizvodu, ljubazno vas molimo da kontaktirate direktno proizvođača kako biste dobili sve detaljne informacije.

Za najnovije informacije o ceni, dostupnim akcijama i tehničkim karakteristikama proizvoda koji se pominje u ovom dokumentu, molimo posetite našu stranicu klikom na sledeći link:

<https://tehnoteka.rs/p/philips-slusalice-tat1215bk10-akcija-cena/>