

Uputstvo za upotrebu (EN)

ASUS slušalice ROG Cetra True Wireless bele

The ASUS logo is displayed in a bold, blue, sans-serif font. It consists of the word "ASUS" with a registered trademark symbol (®) to its upper right.

Tehnoteka je online destinacija za upoređivanje cena i karakteristika bele tehnike, potrošačke elektronike i IT uređaja kod trgovinskih lanaca i internet prodavnica u Srbiji. Naša stranica vam omogućava da istražite najnovije informacije, detaljne karakteristike i konkurentne cene proizvoda.

Posetite nas i uživajte u ekskluzivnom iskustvu pametne kupovine klikom na link:

<https://tehnoteka.rs/p/asus-slusalice-rog-cetra-true-wireless-bele-akcija-cena/>



ROG CETRA TRUE WIRELESS

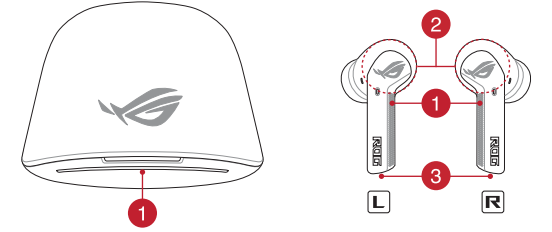
Quick Start Guide (English)
 快速使用指南 (繁體中文)
 快速使用指南 (簡體中文)
 クイックスタートガイド (日本語)
 간단사용설명서 (한국어)
 Guide de démarrage rapide (Français)
 Schnellstartanleitung (Deutsch)
 Guida rapida (Italiano)
 Guia de consulta rápida (Português)
 Краткое руководство (Русский)
 Guía de inicio rápido (Español)
 Beknopte handleiding (Nederlands)



Package contents

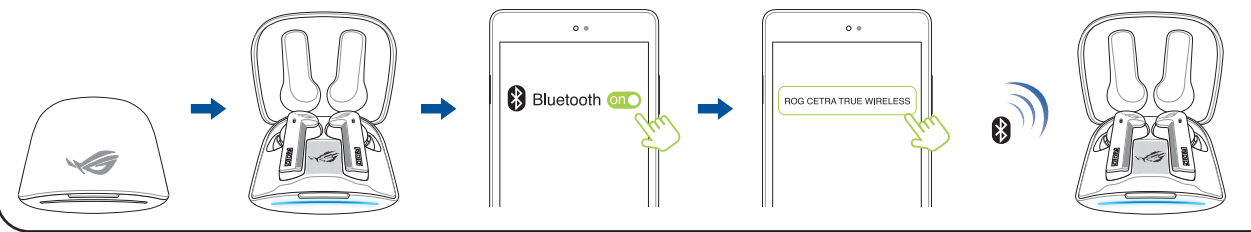


Product Features

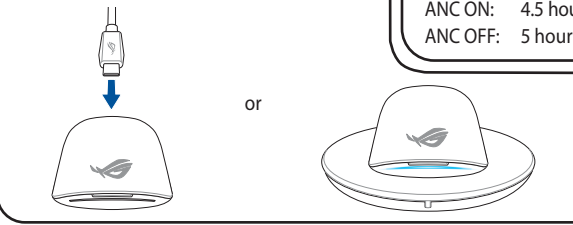


- Indicator / 指示燈 (繁體中文) / 指示灯 (簡體中文) / Témoin lumineux (FR) / Anzeige (DE) / Indicatore (IT) / Индикатор (RU) / インジケーター (JP) / Indicador (ES) / Göstergesi (TR) / Indikátor (CS) / Indicator (NL) / Indicador (PT-BR) / 표시등 (KO) / Индикатор (UA) / Indikator (SV) / Indikator (NO) / Merkkivalo (FI) / Wskaźnik (PL) / Jelzőfény (HU) / Indikátor (SK) / Indicator (RO) / مؤشر (AR) / مؤذن (HB)
- Touch panel / 觸控區 (繁體中文) / 触控区 (簡體中文) / タッチパネル (JP) / 터치 패널 (KO) / Ecran tactile (FR) / Touchpanel (DE) / Pannello a sfioramento (IT) / Painei de toacae (PT-BR) / Сенсорная панель (RU) / Panel táctil (ES) / Aanraakscherm (NL) / Dokunma alany (TR) / Сенсорна панель (UA) / Panel dotykowy (PL) / Dotykowym panelu (CS) / Ecran tactil (RO) / Érintőpanel (HU) / Touchskärm (SV) / Kosketuspaneeli (FI) / Beröringskjermet (NO) / لوحة التمس (AR) / Dotykový panel (SK) / מסך המגע (HB)
- Microphone / 麥克風 (繁體中文) / 麦克风 (簡體中文) / マイク (JP) / 마이크 (KO) / Microphone (FR) / Mikrofon (DE) / Microfono (IT) / Microfone (PT-BR) / Микрофон (RU) / Mikrofoon (ES) / Mikrofon (NL) / Mikrofon (CS) / Mikrofon (SK) / Mikrofon (TR) / Mikrofon (UA) / Mikrofon (SV) / Mikrofon (NO) / Mikrofon (FI) / Mikrofon (PL) / Mikrofon (HU) / Mikrofon (RO) / ميكروفون (AR) / מיקרופון (HB)

Getting Started



Charging the earphones



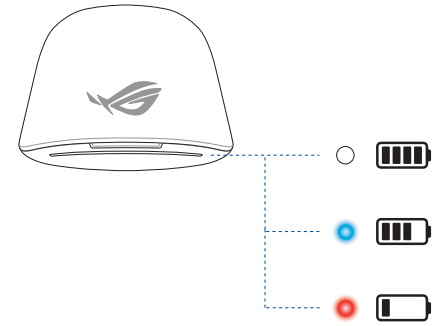
Play time

ANC ON: 4.5 hours
 ANC OFF: 5 hours

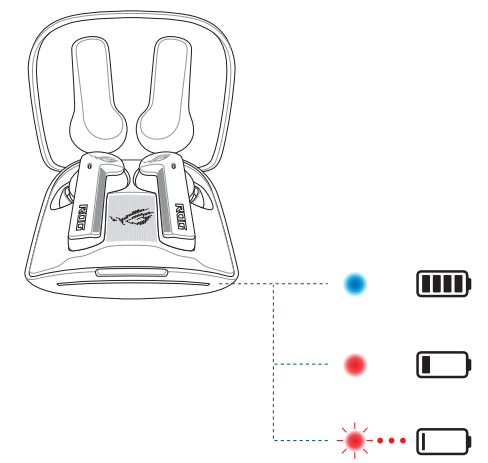
Armoury Crate app



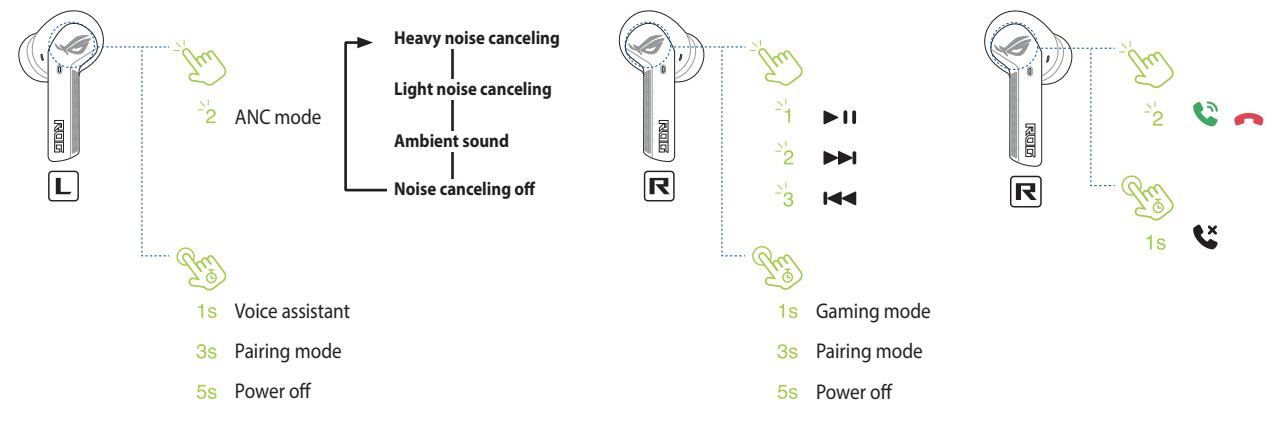
Battery Indication (charging)



Battery Indication (not charging)



Gestures



Safety Guidelines

About the accessories
 Accessories that came with this product have been designed and verified for the use in connection with this product. Never use accessories for other products to prevent the risk of electric shock or fire.

付属品は本製品専用です。本製品を使用の際には、必ず製品/パッケージに付属のものをお使いください。また、付属品は絶対他の製品には使用しないでください。製品破損もしくは、火災や感電の原因となる場合があります。

ANC mode

- (EN) DO NOT use your headphones or toggle ON ANC mode in situations or environments that requires your full attention or requires you to be aware of surrounding sounds, such as when driving or in a construction site, failure to do so may pose as a danger to yourself or others.
- (ZH) 在需要全神貫注或需要注意周圍聲音的情況或環境中（例如在駕駛途中或在建築工地時），請勿使用耳機或打開 ANC 模式，否則可能會對您或他人構成危險。
- (ZHSC) 在需要全神貫注或需要注意周圍聲音的情況或環境中（例如在駕駛途中或在建築工地時），請勿使用耳機或打開 ANC 模式，否則可能會對您或他人構成危險。
- (JP) 自転車、オートバイ、または自動車などを運転中には絶対に使用しないでください。運転中に使用すると、交通事故の原因になります。運転中以外でも、路切や駅のホーム、車道、工事現場など、周囲の音が聞こえないと危険な場所では使用しないでください。
- (KO) 차량을 운전하거나 건설 현장에서와 같이 주의를 기울여야하거나 주변 소리를 인식해야 하는 상황이나 환경에서는 ANC 헤드폰을 사용하지 마세요. 그렇게 하지 않으면 자신이나 다른 사람이 위험 할 수 있습니다.
- (FR) Ne portez pas votre casque ou n'activez pas le mode ANC lorsque vous vous trouvez dans des situations ou des environnements qui nécessitent de porter une attention particulière au sons environnants, notamment lors de la conduite d'un véhicule ou sur un chantier de construction. Le non-respect de cette consigne peut vous mettre en danger et mettre en danger les personnes présentes.

- (DE) Verwenden Sie NICHT Ihren Kopfhörer und schalten Sie nicht in den ANC-Modus um in Situationen oder Umgebungen, die Ihre volle Aufmerksamkeit erfordern oder in denen Sie Ihre Umgebungsgeräusche wahrnehmen müssen, z. B. beim Fahren oder auf einer Baustelle. Nichtbeachtung kann eine Gefahr für Sie selbst oder andere darstellen.
- (IT) NON utilizzare le cuffie o attivare la modalità ANC in situazioni o ambienti che richiedono la totale attenzione dell'utente o che richiedono di essere consapevoli dei suoni circostanti, come durante la guida o in un cantiere. La mancata osservanza di questa precauzione può rappresentare un pericolo per se stessi o gli altri.
- (PT-BR) NÃO use seus fones de ouvido ou alterne para o modo ANC em situações ou ambientes que exijam sua total atenção ou exijam que você esteja ciente dos sons ao redor, como ao dirigir ou em um canteiro de obras. Não seguir estas instruções pode representar um perigo para você ou para os outros.
- (RU) DO NOT use your headphones or toggle ON ANC mode in situations or environments that requires your full attention or requires you to be aware of surrounding sounds, such as when driving or in a construction site, failure to do so may pose as a danger to yourself or others.
- (ES) NO use los auriculares ni active el modo ANC en situaciones o entornos que requieran su atención total o que necesite ser consciente de los sonidos de alrededor, como cuando conduce o en un sitio de obras. El no seguir esta recomendación puede suponer un peligro para usted u otras personas.
- (DU) Gebruik geen hoofdtelefoon of zet de ANC-modus NIET AAN in situaties of omgevingen die uw volle aandacht vereisen of die vereisen dat u zich bewust bent van de omgevende geluiden, zoals wanneer u een voertuig bestuurt of als u zich op een bouwterrein bevindt. Als u dit niet naleeft, kunt u een gevaar betekenen voor uzelf of anderen.
- (TR) Tüm dikkatinizi vermeniz gerekirken veya çevredeki seslerden haberdar olmanız gereken (örneğin araba kullanırken veya bir santiyede) kulaklık KULLANMAYIN veya ANC modunu etkinleştirmezin. Bu öneriyi uymaması, size veya başkaları için tehlike oluşturabilir.
- (UA) НЕ ЗАСТОСОВУЙТЕ гарнітуру і НЕ ВМИКАЙТЕ режим ANC в ситуаціях або умовах, які вимагають повної уваги, або коли необхідно чути всі звуки довкола, як-от під час водіння або на будівництві. Не виконуючи ці правила, ви наражаєте на небезпеку себе та інших.
- (PL) NIE WOLNO korzystać ze słuchawek ani włączać trybu ANC w sytuacjach i miejscach wymagających pełnej uwagi użytkownika lub słyszenia dźwięków otoczenia, np. podczas prowadzenia pojazdu lub na placu budowy. Niezastosowanie się do tego może stanowić zagrożenie dla użytkownika lub innych osób.
- (CS) NEPOUŽÍVEJTE sluchátka ani NEZAPÍNEJTE režim ANC v situaci nebo prostředí, ve kterém je vyžadována vaše plná pozornost, nebo když musíte sledovat okolní zvuky, například při řízení vozidla nebo na staveništi. Zanedbáním těchto pokynů se můžete vy nebo další osoby vystavit nebezpečí.
- (RO) NU folosiți căștile și nu activați modul ANC în situații sau medii care necesită atenția dvs. deplină sau care vă solicită să fiți conștienți de sunetele din jur, cum ar fi când conduceți sau când vă aflați pe un șantier, deoarece vă puteți pune în pericol pe dvs. sau pe cei din jur.
- (HU) NE használja a fejhallgatókat, vagy kapcsolja BE az ANC módot olyan helyzetben vagy környezetben, amely teljes figyelmet igényel, vagy ahol szükséges a környező hangokra való figyelés, úgy mint vezetés közben vagy építkezésen, ennek elmulasztása veszélyt jelenthet az Ön és mások számára.
- (SV) Använd INTE hörlurar eller sätt PÅ ANC-läget i situationer eller miljöer som kräver din fullständiga uppmärksamhet eller kräver att du är medveten om omgivande ljud, som när du kör eller är på en byggarbetsplats. Underlåtenhet att följa rekommendationen kan utgöra en fara för dig själv och andra.
- (FI) ÄLÄ käytä kuulokkeita tai vaihda ON ANC-tilaan tilanteissa tai ympäristöissä, jotka vaativat täyttä huomiota tai vaativat sinun olevan tietoinen ympäristön äänistä, kuten autolla ajassa tai rakennustyömaalla, tämän laiminlyönti voi muodostaa vaaran itsellesi tai muille.
- (NO) IKKE bruk hodetelefonene eller slå på støykanselleringer i situasjoner eller miljøer som krever full oppmerksomhet eller at du er klar over lyder i omgivelsene, for eksempel når du kjører eller er på en byggeplass. Ellers kan det utgjøre en fare for deg selv eller andre.
- (AR) لا تستخدم سماعات الرأس خاصتك أو تحول إلى وضع ON ANC في الموقف أو البيئة التي تتطلب انتباهك التام أو تتطلب منك الوعي بالصوت المحيطة مثل: أثناء القيادة أو في موقع البناء والإحفاق في القيام بذلك قد يعرض الآخرين للخطر.
- (SK) Slúchadlá NEPOUŽÍVAJTE ani nezapínajte režim ANC v situáciách alebo prostrediach, ktoré si vyžadujú vašu plnú pozornosť alebo aby ste vnímali okolité zvuky, ako napríklad pri jazde s vozidlom alebo na stavenisku. Ak tak neurobite, môžete ohroziť seba alebo iných.
- (HB) לעשות שמעיה, כגון בהנהיגה או באתר בנייה, או יצית להנחה זו עלול להוות סכנה לך ולאחרים.
- (EN) DO NOT use your headphones or toggle ON ANC mode in situations or environments that requires your full attention or requires you to be aware of surrounding sounds, such as when driving or in a construction site, failure to do so may pose as a danger to yourself or others.
- (ZH) 在需要全神貫注或需要注意周圍聲音的情況或環境中（例如在駕駛途中或在建築工地時），請勿使用耳機或打開 ANC 模式，否則可能會對您或他人構成危險。
- (ZHSC) 在需要全神貫注或需要注意周圍聲音的情況或環境中（例如在駕駛途中或在建築工地時），請勿使用耳機或打開 ANC 模式，否則可能會對您或他人構成危險。
- (JP) 自転車、オートバイ、または自動車などを運転中には絶対に使用しないでください。運転中に使用すると、交通事故の原因になります。運転中以外でも、路切や駅のホーム、車道、工事現場など、周囲の音が聞こえないと危険な場所では使用しないでください。
- (KO) 차량을 운전하거나 건설 현장에서와 같이 주의를 기울여야하거나 주변 소리를 인식해야 하는 상황이나 환경에서는 ANC 헤드폰을 사용하지 마세요. 그렇게 하지 않으면 자신이나 다른 사람이 위험 할 수 있습니다.
- (FR) Ne portez pas votre casque ou n'activez pas le mode ANC lorsque vous vous trouvez dans des situations ou des environnements qui nécessitent de porter une attention particulière au sons environnants, notamment lors de la conduite d'un véhicule ou sur un chantier de construction. Le non-respect de cette consigne peut vous mettre en danger et mettre en danger les personnes présentes.



Notices

Federal Communications Commission Statement

This device complies with Part 15 of the FCC Rules. Operation is subject to the following two conditions:
 • This device may not cause harmful interference.
 • This device must accept any interference received including interference that may cause undesired operation.

This equipment has been tested and found to comply with the limits for a Class B digital device, pursuant to Part 15 of the FCC Rules. These limits are designed to provide reasonable protection against harmful interference in a residential installation. This equipment generates, uses and can radiate radio frequency energy and, if not installed and used in accordance with manufacturer’s instructions, may cause harmful interference to radio communications. However, there is no guarantee that interference will not occur in a particular installation. If this equipment does cause harmful interference to radio or television reception, which can be determined by turning the equipment off and on, the user is encouraged to try to correct the interference by one or more of the following measures:

- Reorient or relocate the receiving antenna.
- Increase the separation between the equipment and receiver.
- Connect the equipment to an outlet on a circuit different from that to which the receiver is connected.
- Consult the dealer or an experienced radio/TV technician for help.

CAUTION! The use of shielded cables for connection of the monitor to the graphics card is required to assure compliance with FCC regulations. Changes or modifications to this unit not expressly approved by the party responsible for compliance could void the user’s authority to operate this equipment.

Limitation of Liability

Circumstances may arise where because of a default on ASUS’ part or other liability, you are entitled to recover damages from ASUS. In each such instance, regardless of the basis on which you are entitled to claim damages from ASUS, ASUS is liable for no more than damages for bodily injury (including death) and damage to real property and tangible personal property; or any other actual and direct damages resulted from omission or failure of performing legal duties under this Warranty Statement, up to the listed contract price of each product.

ASUS will only be responsible for or indemnify you for loss, damages or claims based in contract, tort or infringement under this Warranty Statement.

This limit also applies to ASUS’ suppliers and its reseller. It is the maximum for which ASUS, its suppliers, and your reseller are collectively responsible.

UNDER NO CIRCUMSTANCES IS ASUS LIABLE FOR ANY OF THE FOLLOWING: (1) THIRD-PARTY CLAIMS AGAINST YOU FOR DAMAGES; (2) LOSS OF, OR DAMAGE TO, YOUR RECORDS OR DATA; OR (3) SPECIAL, INCIDENTAL, OR INDIRECT DAMAGES OR FOR ANY ECONOMIC CONSEQUENTIAL DAMAGES (INCLUDING LOST PROFITS OR SAVINGS), EVEN IF ASUS, ITS SUPPLIERS OR YOUR RESELLER IS INFORMED OF THEIR POSSIBILITY.

RF Exposure Warning

The equipment complies with FCC RF exposure limits set forth for an uncontrolled environment. The equipment must not be co-located or operating in conjunction with any other antenna or transmitter.

Radio Frequency (RF) Exposure Information

The radiated output power of the Wireless Device is below the Innovation, Science and Economic Development Canada (ISED) radio frequency exposure limits. The Wireless Device should be used in such a manner such that the potential for human contact during normal operation is minimized. This device has also been evaluated and shown compliant with the ISED RF Exposure limits under portable exposure conditions. (antennas are less than 20 cm of a person’s body).

Informations concernant l’exposition aux fréquences radio (RF)

La puissance de sortie rayonnée du dispositif sans fil est inférieure aux limites d’exposition aux radiofréquences d’Innovation, Sciences et Développement économique Canada (ISED). Le dispositif sans fil doit être utilisé de manière à minimiser le potentiel de contact humain pendant le fonctionnement normal. Cet appareil a également été évalué et montré conforme aux limites d’exposition RF ISED dans des conditions d’exposition portable. (les antennes mesurent moins de 20 cm du corps d’une personne).

REACH

Complying with the REACH (Registration, Evaluation, Authorisation, and Restriction of Chemicals) regulatory framework, we published the chemical substances in our products at ASUS REACH website at <http://csr.asus.com/english/REACH.htm>.

Compliance Statement of Innovation, Science and Economic Development Canada (ISED)

This device complies with Innovation, Science and Economic Development Canada licence exempt RSS standard(s). Operation is subject to the following two conditions: (1) this device may not cause interference, and (2) this device must accept any interference, including interference that may cause undesired operation of the device.

CAN ICES-003(B)/NMB-003(B)

Déclaration de conformité de Innovation, Sciences et Développement économique Canada (ISED)

Le présent appareil est conforme aux CNR d’Innovation, Sciences et Développement économique Canada applicables aux appareils radio exempts de licence. L’exploitation est autorisée aux deux conditions suivantes : (1) l’appareil ne doit pas produire de brouillage, et (2) l’utilisateur de l’appareil doit accepter tout brouillage radioélectrique subi, même si le brouillage est susceptible d’en compromettre le fonctionnement.

CAN ICES-003(B)/NMB-003(B)



电子电气产品有害物质限制使用标识：图中之数字为产品之环保使用期限。仅指电子电气产品中含有的有害物质不致发生外泄或突变，从而对环境造成污染或对人体、财产造成严重损害的期限。

部件名称	有害物质					
	铅 (Pb)	汞 (Hg)	镉 (Cd)	六价铬 (Cr(VI))	多溴联苯 (PBB)	多溴二苯醚 (PBDE)
印刷电路板及其电子组件	×	○	○	○	○	○
外壳	○	○	○	○	○	○
外部信号连接器及线材	○	○	○	○	○	○
其它	×	○	○	○	○	○

本表格依据 SJ/T 11364 的规定编制。
 ○：表示该有害物质在该部件所有均质材料中的含量均在 GB/T 26572 规定的限量要求以下。
 ×：表示该有害物质至少在该部件的某一均质材料中的含量超出 GB/T 26572 规定的限量要求，然该部件仍符合欧盟指令 2011/65/EU 的规范。
 备注：此产品所标示之环保使用期限，系指在一般正常使用状况下。

限用物質及其化學符號：

This limit also applies to ASUS’ suppliers and its reseller. It is the maximum for which ASUS, its suppliers, and your reseller are collectively responsible.

單元	限用物質及其化學符號					
	鉛 (Pb)	汞 (Hg)	鎘 (Cd)	六價鉻 (Cr ^{VI})	多溴聯苯 (PBB)	多溴二苯醚 (PBDE)
印刷電路板及電子組件	-	○	○	○	○	○
外觀	○	○	○	○	○	○
滾輪裝置	-	○	○	○	○	○
其他及其配件	-	○	○	○	○	○

備考 1. “○” 係指該項限用物質之百分比含量未超出百分比含量基準值。
 備考 2. “-” 係指該項限用物質為排除項目。

NCC: Taiwan Wireless Statement

低功率射頻器材技術規範

取得審驗證明之低功率射頻器材，非經核准，公司、商號或使用人均不得擅自變更頻率、加大功率或變更原設計之特性及功能。低功率射頻器材之使用不得影響飛航安全及干擾合法通信；經發現有干擾現象時，應立即停用，並改善至無干擾時方得繼續使用。前述合法通信，指依電信管理法規作業之無線電通信。低功率射頻器材須忍受合法通信或工業、科學及醫療用電波輻射性電機設備之干擾。應避免影響附近雷達系統之操作。

VCCI: Japan Compliance Statement

VCCI Class B Statement

VCCI 準拠クラス B 機器 (日本)

この装置は、クラス B 情報技術装置です。この装置は、家庭環境で使用することを目的としていますが、この装置がラジオやテレビジョン受信機に近接して使用されると、受信障害を引き起こすことがあります。取扱説明書に従って正しい取り扱いをして下さい。

KC: Korea Warning Statement



B급 기기 (가정용 방송통신기자재)
이 기기는 가정용(B급) 전자파적합기기로서 주로 가정에서 사용하는 것을 목적으로 하며, 모든 지역에서 사용할 수 있습니다.

ASUS Recycling/Takeback Services

ASUS recycling and takeback programs come from our commitment to the highest standards for protecting our environment. We believe in providing solutions for you to be able to responsibly recycle our products, batteries, other components as well as the packaging materials. Please go to <http://csr.asus.com/english/Takeback.htm> for detailed recycling information in different regions.

Proper disposal



DO NOT throw the device in municipal waste. This product has been designed to enable proper reuse of parts and recycling. The symbol of the crossed out wheeled bin indicates that the product (electrical, electronic equipment and mercury-containing button cell battery) should not be placed in municipal waste. Check local regulations for disposal of electronic products.



DO NOT throw the device in fire. DO NOT short circuit the contacts.
DO NOT disassemble the device.

UKCA RF Output table (The Radio Equipment Regulations 2017)

Function	Frequency	Maximum Output Power (EIRP)
Bluetooth	2402 - 2480 MHz	10 dBm

CE RED RF Output table (Directive 2014/53/EU)

Function	Frequency	Maximum Output Power (EIRP)
Bluetooth	2402 - 2480 MHz	10 dBm

Ukraine Certification Logo



EAC Certification Logo



Simplified UKCA Declaration of Conformity

ASUSTek Computer Inc. hereby declares that this device is in compliance with the essential requirements and other relevant provisions of The Radio Equipment Regulations 2017 (S.I. 2017/1206). Full text of UKCA declaration of conformity is available at <https://www.asus.com/support/>.

CE Mark Warning



English ASUSTek Computer Inc. hereby declares that this device is in compliance with the essential requirements and other relevant provisions of related Directives. Full text of EU declaration of conformity is available at: www.asus.com/support

Français AsusTek Computer Inc. déclare par la présente que cet appareil est conforme aux critères essentiels et autres clauses pertinentes des directives concernées. La déclaration de conformité de l’UE peut être téléchargée à partir du site Internet suivant : www.asus.com/support.

Deutsch ASUSTek Computer Inc. erklärt hiermit, dass dieses Gerät mit den wesentlichen Anforderungen und anderen relevanten Bestimmungen der zugehörigen Richtlinien übereinstimmt. Der gesamte Text der EU-Konformitätserklärung ist verfügbar unter: www.asus.com/support

Italiano ASUSTek Computer Inc. con la presente dichiara che questo dispositivo è conforme ai requisiti essenziali e alle altre disposizioni pertinenti con le direttive correlate. Il testo completo della dichiarazione di conformità UE è disponibile all’indirizzo: www.asus.com/support

Svenska ASUSTek Computer Inc. förklarar härmed att denna enhet överensstämmer med de grundläggande kraven och andra relevanta föreskrifter i relaterade direktiv. Fulltext av EU-försäkran om överensstämmelse finns på: www.asus.com/support

Українська ASUSTek Computer Inc. заявляє, що цей пристрій відповідає основним вимогам та іншим відповідним положенням відповідних Директив. Повний текст декларації відповідності стандартам ЄС доступний на: www.asus.com/support

Türkçe AsusTek Computer Inc., bu aygıtın temel gereksinimleri ve ilişkin Yönergelerin diğer ilgili koşullarıyla uyumlu olduğunu beyan eder. AB uyumluluk bildiriminin tam metni şu adreste bulunabilir: www.asus.com/support

Bosanski ASUSTek Computer Inc. ovim izjavljuju da je ovaj uređaj uskladen sa bitnim zahtjevima i ostalim odgovarajućim odredbama vezanih direktiva. Cijeli tekst EU izjave o uskladenosti dostupan je na: www.asus.com/support

FCC COMPLIANCE INFORMATION

Per FCC Part 2 Section 2.1077



Responsible Party: Asus Computer International
Address: 48720 Kato Rd., Fremont, CA 94538, USA
Phone/Fax No: (510)739-3777/(510)608-4555

hereby declares that the product

Product Name : ROG CETRA TRUE WIRELESS
Model Number : ROG CETRA TRUE WIRELESS

compliance statement:

This device complies with part 15 of the FCC Rules. Operation is subject to the following two conditions: (1) This device may not cause harmful interference, and (2) this device must accept any interference received, including interference that may cause undesired operation.

Ver. 180125

Service and Support

Visit our multi-language website at <https://www.asus.com/support>.



Manufacturer	ASUSTek COMPUTER INC.
Address, City	1F, No. 15, Lide Rd., Beitou Dist., Taipei City 112, Taiwan
Authorized Representative in Europe	ASUS COMPUTER GmbH
Address	Harkortstrasse 21-23, 40880 Ratingen
Country	Germany
Authorized Representative in United Kingdom	ASUSTEK (UK) LIMITED
Address	1st Floor, Sackville House, 143-149 Fenchurch Street, London, EC3M 6BL, England
Country	United Kingdom

Ovaj dokument je originalno proizveden i objavljen od strane proizvođača, brenda Asus, i preuzet je sa njihove zvanične stranice. S obzirom na ovu činjenicu, Tehnoteka ističe da ne preuzima odgovornost za tačnost, celovitost ili pouzdanost informacija, podataka, mišljenja, saveta ili izjava sadržanih u ovom dokumentu.

Napominjemo da Tehnoteka nema ovlašćenje da izvrši bilo kakve izmene ili dopune na ovom dokumentu, stoga nismo odgovorni za eventualne greške, propuste ili netačnosti koje se mogu naći unutar njega. Tehnoteka ne odgovara za štetu nanесenu korisnicima pri upotrebi netačnih podataka. Ukoliko imate dodatna pitanja o proizvodu, ljubazno vas molimo da kontaktirate direktno proizvođača kako biste dobili sve detaljne informacije.

Za najnovije informacije o ceni, dostupnim akcijama i tehničkim karakteristikama proizvoda koji se pominje u ovom dokumentu, molimo posetite našu stranicu klikom na sledeći link:

<https://tehnoteka.rs/p/asus-slusalice-rog-cetra-true-wireless-bele-akcija-cena/>