

Uputstvo za upotrebu (EN)

LOGITECH bežični miš M171 crni

logitech



Tehnoteka je online destinacija za upoređivanje cena i karakteristika bele tehnike, potrošačke elektronike i IT uređaja kod trgovinskih lanaca i internet prodavnica u Srbiji. Naša stranica vam omogućava da istražite najnovije informacije, detaljne karakteristike i konkurentne cene proizvoda.

Posetite nas i uživajte u ekskluzivnom iskustvu pametne kupovine klikom na link:

<https://tehnoteka.rs/p/logitech-bezicni-mis-m171-crni-akcija-cena/>

logitech®

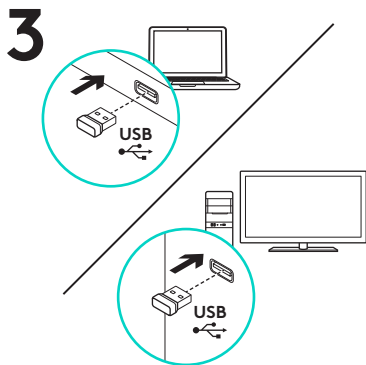
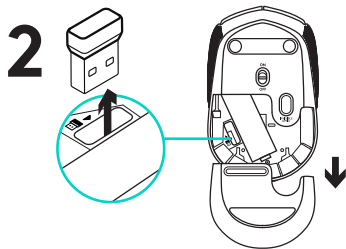
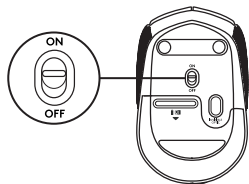
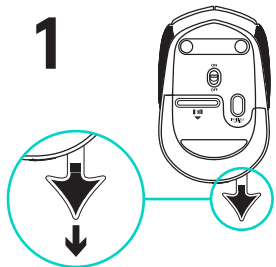
M170/M171/B170 Reliable wireless connectivity



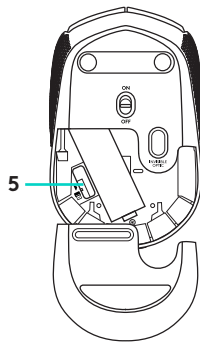
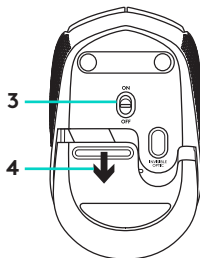
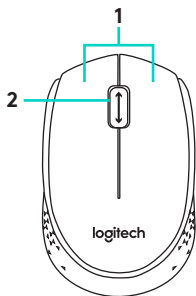
Setup Guide

Languages

English	3
简体中文	6
繁體中文	9
한국어	12



Features

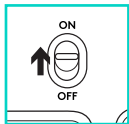


1. Left and right mouse buttons
2. Scroll wheel
Press the wheel down for middle button (function can vary by software application)

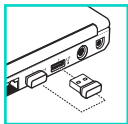
3. On/Off slider switch
4. Battery door release
5. USB Nano-receiver storage

Help with setup: Mouse is not working

1



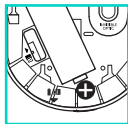
2



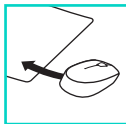
3



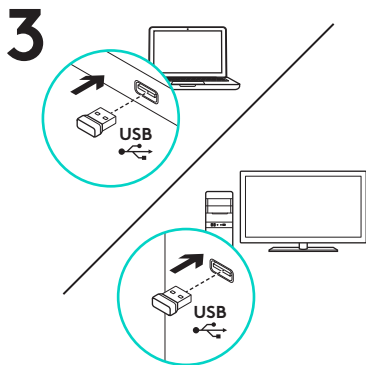
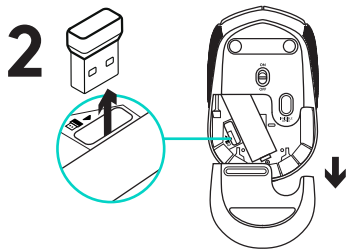
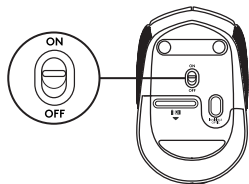
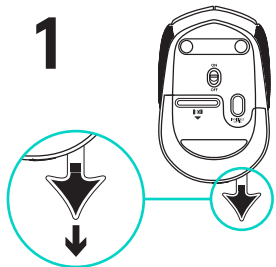
4



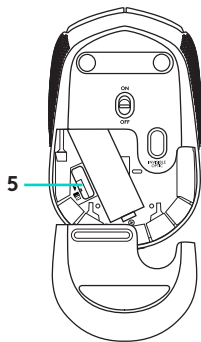
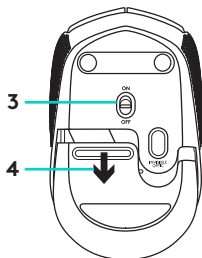
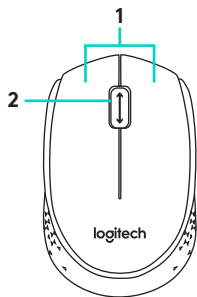
5



1. Is the mouse powered on?
2. Is the Nano receiver securely plugged into a USB port? Try changing USB ports.
3. If the Nano receiver is plugged into a USB hub, try plugging it directly into a USB port on your computer.
4. Check the orientation of the battery inside the mouse.
5. Try a different surface. Remove metallic objects between the mouse and the Nano receiver.
6. For Windows® operating systems, reconnect the mouse with the Nano receiver by launching the Connect utility from www.logitech.com/connect_utility.



功能



1. 左/右鼠标按键

2. 滚轮

按下滚轮可作中键使用（功能可能依软件应用程序而异）

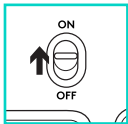
3. 开启/关闭滑动开关

4. 电池盖释放

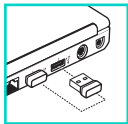
5. 即插即忘微型 USB 接收器的收存

设置帮助: 鼠标不工作

1



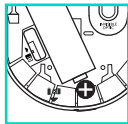
2



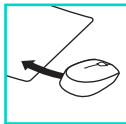
3



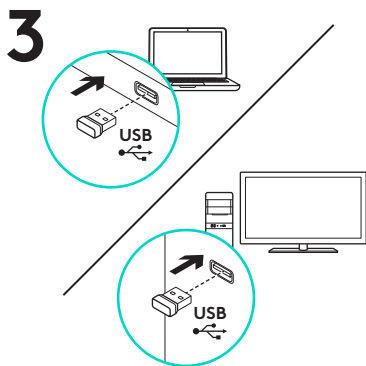
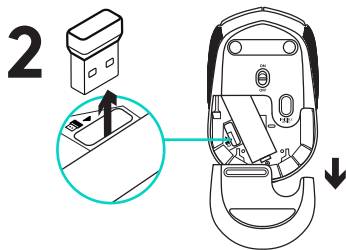
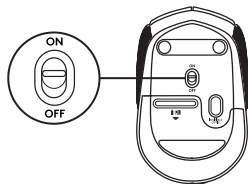
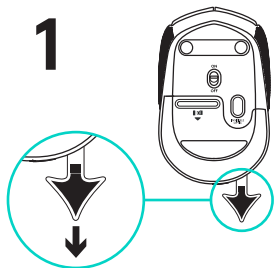
4



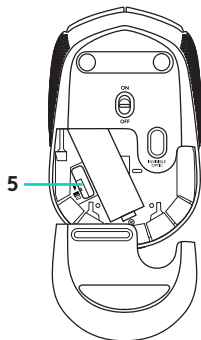
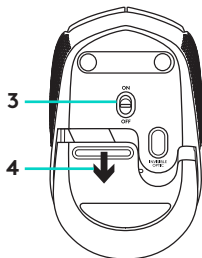
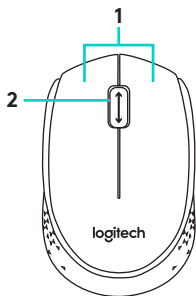
5



1. 鼠标是否已接通电源？
2. 即插即忘微型接收器是否已牢固地插入 USB 端口？ 尝试更换 USB 端口。
3. 如果即插即忘微型接收器已插入 USB 集线器，则尝试将其直接插入电脑的 USB 端口。
4. 检查鼠标内的电池方向。
5. 尝试其他表面。 移除鼠标和即插即忘微型接收器之间的金属物体。
6. 对于 Windows® 操作系统，请启动从 www.logitech.com/connect_utility 获取的 Connect utility (“连接”实用程序)，重新连接鼠标和即插即忘微型。



功能



1. 左右滑鼠按鈕

2. 滾輪

按下滾輪可作為中鍵使用（功能會依軟體應用程式而異）。

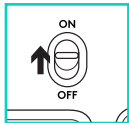
3. 開啓/關閉滑動開關。

4. 開啓電池外蓋

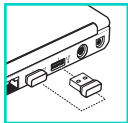
5. USB 隨插即忘小型接收器存放槽

設定說明：滑鼠無法正常運作

1



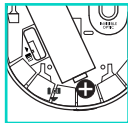
2



3



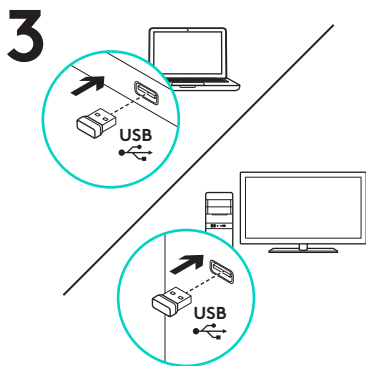
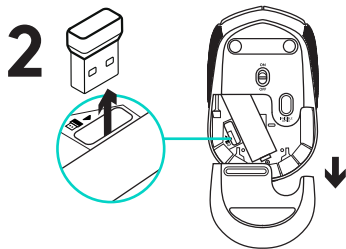
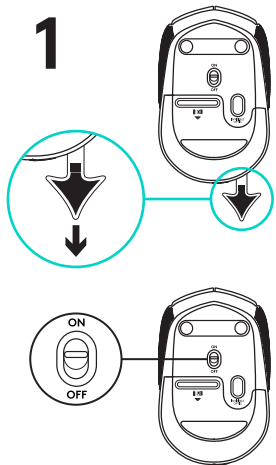
4



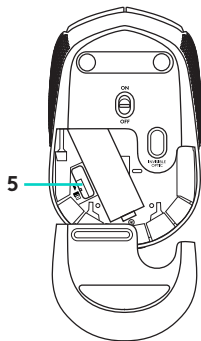
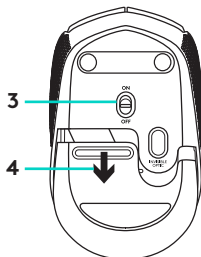
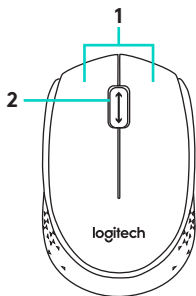
5



1. 滑鼠是否已開啓電源？
2. 小型接收器是否已牢固地插入電腦的 USB 連接埠？請嘗試更換 USB 連接埠。
3. 如果小型接收器是插在 USB 集線器上，請嘗試將其直接插入到電腦上的 USB 連接埠。
4. 檢查滑鼠內部電池的方向。
5. 嘗試不同的表面。將滑鼠和小型接收器之間的金屬物移走。
6. 如果是 Windows® 作業系統，請執行 Connect 公用程式（可從 www.logitech.com/connect_utility 取得）以重新連接滑鼠與小型接收器。



기능



1. 왼쪽/오른쪽 마우스 버튼

2. 스크롤 휠

가운데 버튼으로 휠을 누름(이 기능은 소프트웨어 응용 프로그램에 따라 다를 수 있음)

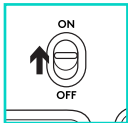
3. 켜기 / 끄기 슬라이더 스위치

4. 배터리 도어 해제

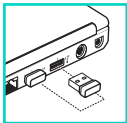
5. USB 나노 수신기 스토리지

설치 도움말: 마우스가 작동되지 않을 때

1



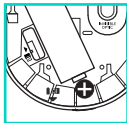
2



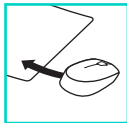
3



4



5



1. 마우스 전원이 켜져 있습니까?
2. 나노 수신기가 USB 포트에 안정적으로 연결되어 있습니까? 다른 USB 포트에 연결해 보십시오.
3. 나노 수신기가 USB 허브에 연결되어 있으면 컴퓨터 USB 포트에 직접 연결해 보십시오.
4. 마우스 내부의 배터리 방향을 점검하십시오.
5. 다른 표면에 사용해 보십시오. 마우스와 나노 수신기 사이에 있는 금속 물체를 제거하십시오.
6. Windows® 운영 체제의 경우 www.logitech.com/connect_utility의 연결 유틸리티를 시작하여 마우스를 나노 수신기와 다시 연결하십시오.



www.logitech.com

© 2015 Logitech. Logitech, 罗技, Logi and other Logitech marks are owned by Logitech and may be registered. All other trademarks are the property of their respective owners. Logitech assumes no responsibility for any errors that may appear in this manual. Information contained herein is subject to change without notice.

版权所有 © 2015 年罗技。罗技、Logi 和其他罗技商标均归罗技所有，并或已注册。所有其它商标均是其各自所有者的财产。罗技对于本手册中可能出现的任何错误不承担任何责任。本手册中包含的信息如有更改，恕不事先通知。

版權所有 © 2015 年羅技。羅技、Logi 和其他 Logitech 商標均歸羅技所有，並或已註冊。所有其他商標均是其各自所有人的財產。羅技對於本手冊中可能出現的任何錯誤不承擔任何責任。手冊內容如有更改，恕不另行通知。本廣告內所使用的數據如無特別說明均來自羅技有限公司和/或其關聯公司。

© 2015 Logitech. Logitech, Logi 및 기타 Logitech 상표는 Logitech의 소유이며 등록 상표일 수 있습니다. 그 밖의 모든 상표는 해당 소유자의 자산입니다. Logitech은 이 설명서에 명시된 어떤 오류에 대해서도 책임지지 않습니다. 이 설명서에 있는 정보는 예고 없이 변경될 수 있습니다.

621-000653.002

Ovaj dokument je originalno proizveden i objavljen od strane proizvođača, brenda Logitech, i preuzet je sa njihove zvanične stranice. S obzirom na ovu činjenicu, Tehnoteka ističe da ne preuzima odgovornost za tačnost, celovitost ili pouzdanost informacija, podataka, mišljenja, saveta ili izjava sadržanih u ovom dokumentu.

Napominjemo da Tehnoteka nema ovlašćenje da izvrši bilo kakve izmene ili dopune na ovom dokumentu, stoga nismo odgovorni za eventualne greške, propuste ili netačnosti koje se mogu naći unutar njega. Tehnoteka ne odgovara za štetu nanесenu korisnicima pri upotrebi netačnih podataka. Ukoliko imate dodatna pitanja o proizvodu, ljubazno vas molimo da kontaktirate direktno proizvođača kako biste dobili sve detaljne informacije.

Za najnovije informacije o ceni, dostupnim akcijama i tehničkim karakteristikama proizvoda koji se pominje u ovom dokumentu, molimo posetite našu stranicu klikom na sledeći link:

<https://tehnoteka.rs/p/logitech-bezicni-mis-m171-crni-akcija-cena/>