

Uputstvo za upotrebu (EN)

LOGITECH miš G403 Hero

logitech



Tehnoteka je online destinacija za upoređivanje cena i karakteristika bele tehnike, potrošačke elektronike i IT uređaja kod trgovinskih lanaca i internet prodavnica u Srbiji. Naša stranica vam omogućava da istražite najnovije informacije, detaljne karakteristike i konkurentne cene proizvoda.

Posetite nas i uživajte u ekskluzivnom iskustvu pametne kupovine klikom na link:

<https://tehnoteka.rs/p/logitech-mis-g403-hero-akcija-cena/>

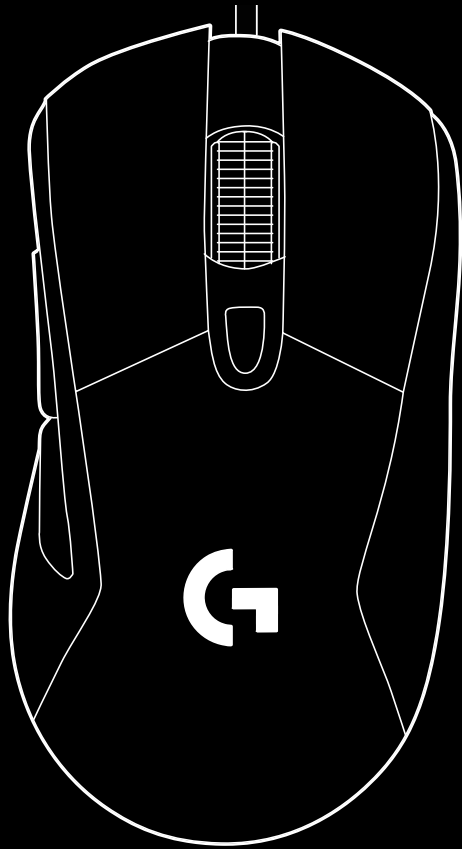
G403 HERO

Gaming Mouse
Souris gaming

[SETUP GUIDE](#) | [GUIDE D'INSTALLATION](#)



logitech ™



ENGLISH	3
FRANÇAIS	7
ESPAÑOL	11
PORTUGUÊS	15

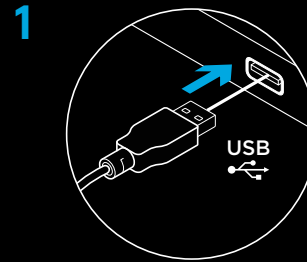
logitech ™

Important Safety, Compliance and
Warranty Information
Informations importantes
concernant la sécurité,
la mise en conformité et la garantie

SETUP INSTRUCTIONS

Please read the instructions before operating the product.

1 Plug mouse into USB port.



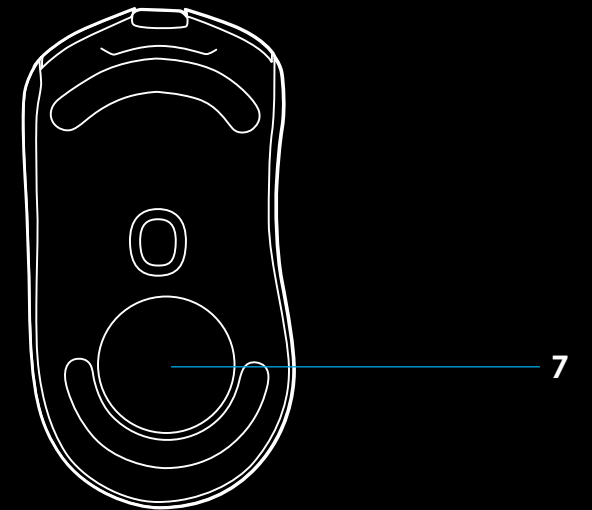
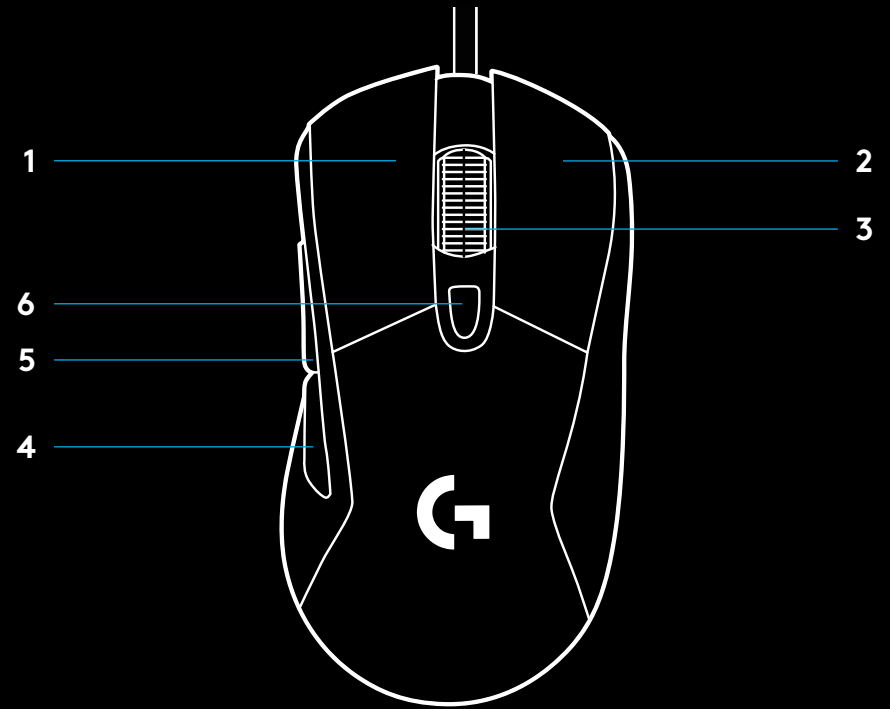
2 Download and install Logitech G HUB software from www.logitechG.com/GHUB.



www.logitechG.com/GHUB

6 FULLY PROGRAMMABLE BUTTONS

- 1 Left (Button 1)
- 2 Right (Button 2)
- 3 Wheel click (Button 3)
- 4 Back (Button 4)
- 5 Forward (Button 5)
- 6 DPI Cycle
- 7 Weight door



RGB PROGRAMMABLE LIGHTING

G403 HERO wheel and logo are illuminated with RGB LEDs.

These colors can be customized using Logitech G HUB gaming software to a variety of breathing, color cycling, or solid color modes.

Lighting patterns can also be synchronized with other supported Logitech G devices using this software.

LIGHTSYNC RGB

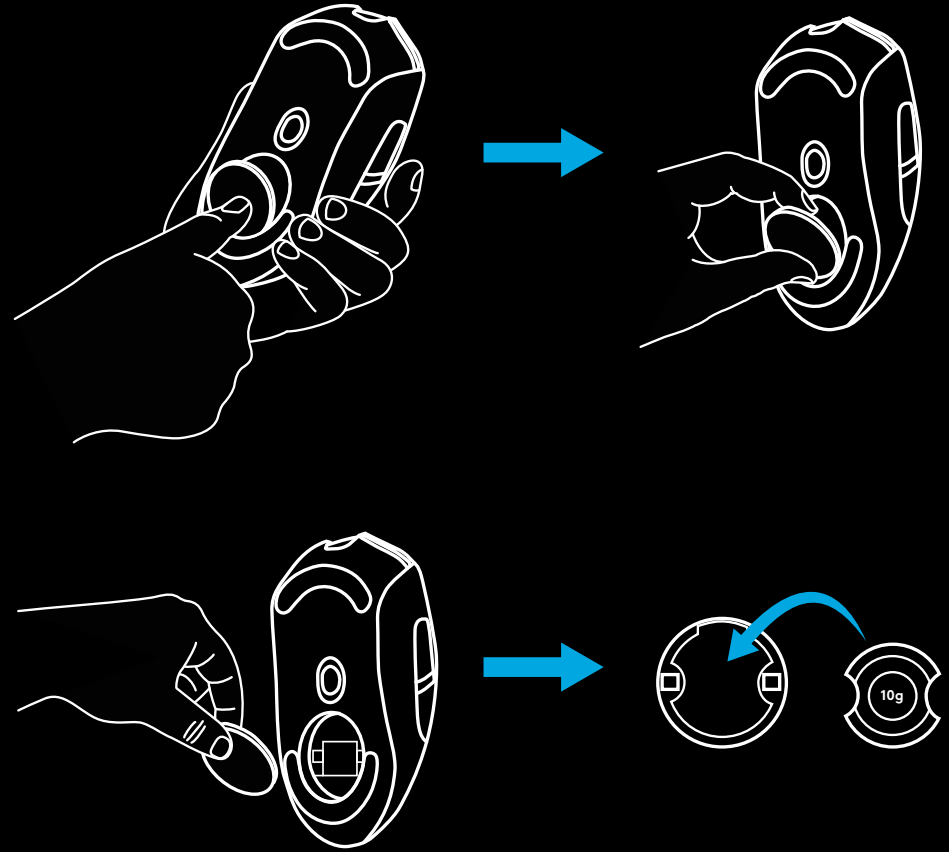
LIGHTSYNC RGB is game-driven, intelligent lighting that reacts to in-game action, audio, screen color and more.

Customize with Logitech G HUB gaming software to match your set up and style.



WEIGHT CUSTOMIZATION

An optional 10g weight can be found in the packaging.



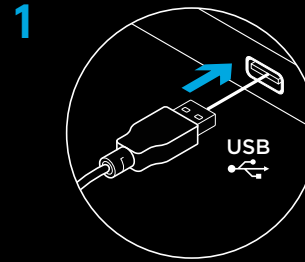
FREQUENTLY ASKED QUESTIONS

www.logitechG.com/support/G403-HERO

INSTRUCTIONS D'INSTALLATION

Veillez lire les instructions avant d'utiliser le produit.

1 Branchez la souris dans le port USB.



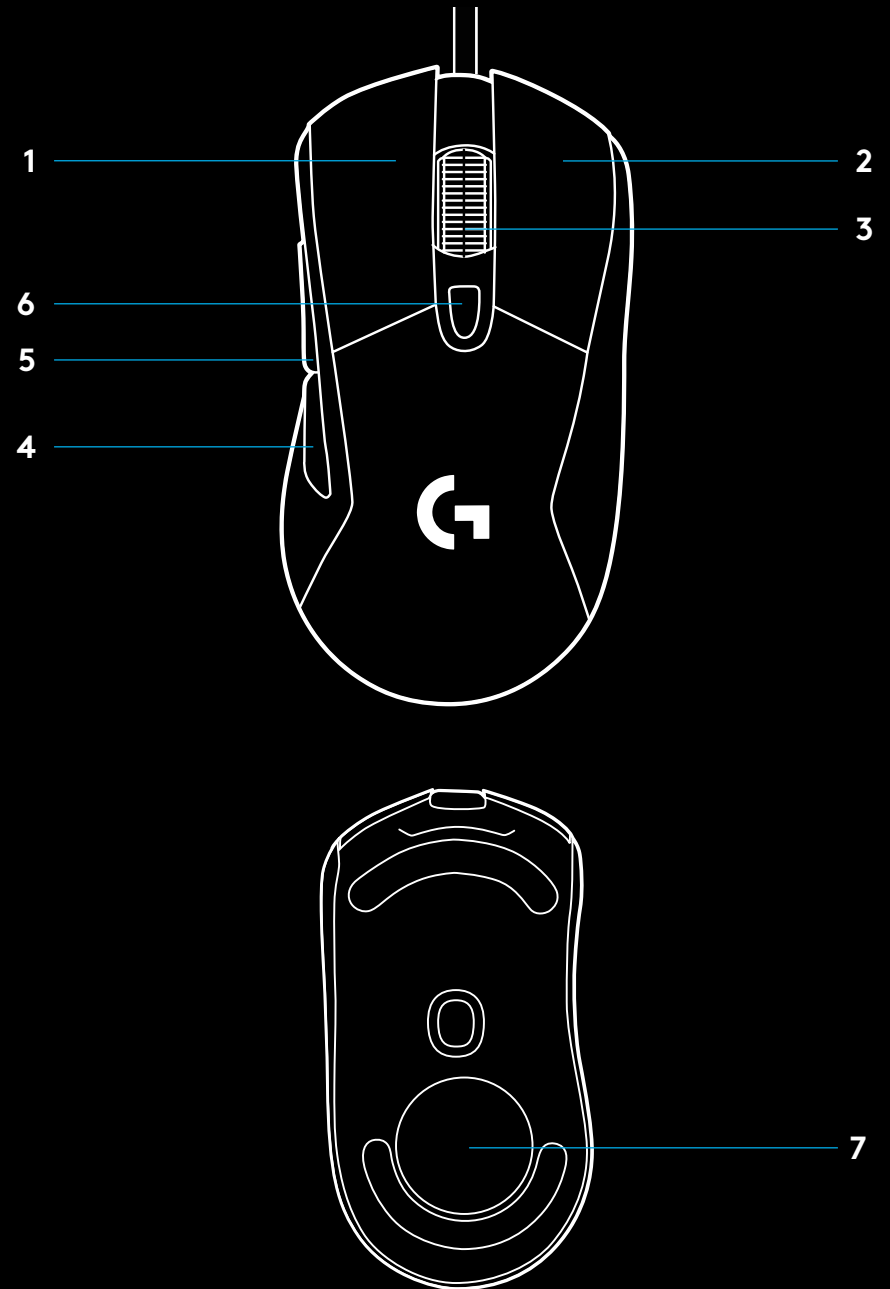
2 Téléchargez et installez le logiciel Logitech G HUB:
www.logitechG.com/GHUB.



www.logitechG.com/GHUB

6 BOUTONS ENTIÈREMENT PROGRAMMABLES

- 1 Gauche (bouton 1)
- 2 Droit (bouton 2)
- 3 Clic de roulette (bouton 3)
- 4 Précédent (bouton 4)
- 5 Suivant (bouton 5)
- 6 Cycle de résolution
- 7 Clapet du compartiment du poids



ÉCLAIRAGE RVB PROGRAMMABLE

L'éclairage de la roulette et du logo de la souris G403 HERO sont assurés par des témoins lumineux RVB.

Les couleurs de ces zones peuvent être personnalisées via le logiciel gaming Logitech G HUB avec toute une gamme de couleurs pulsées, changeantes ou fixes.

Les variations lumineuses peuvent être synchronisées avec celles d'autres dispositifs Logitech G gérés par ce logiciel.

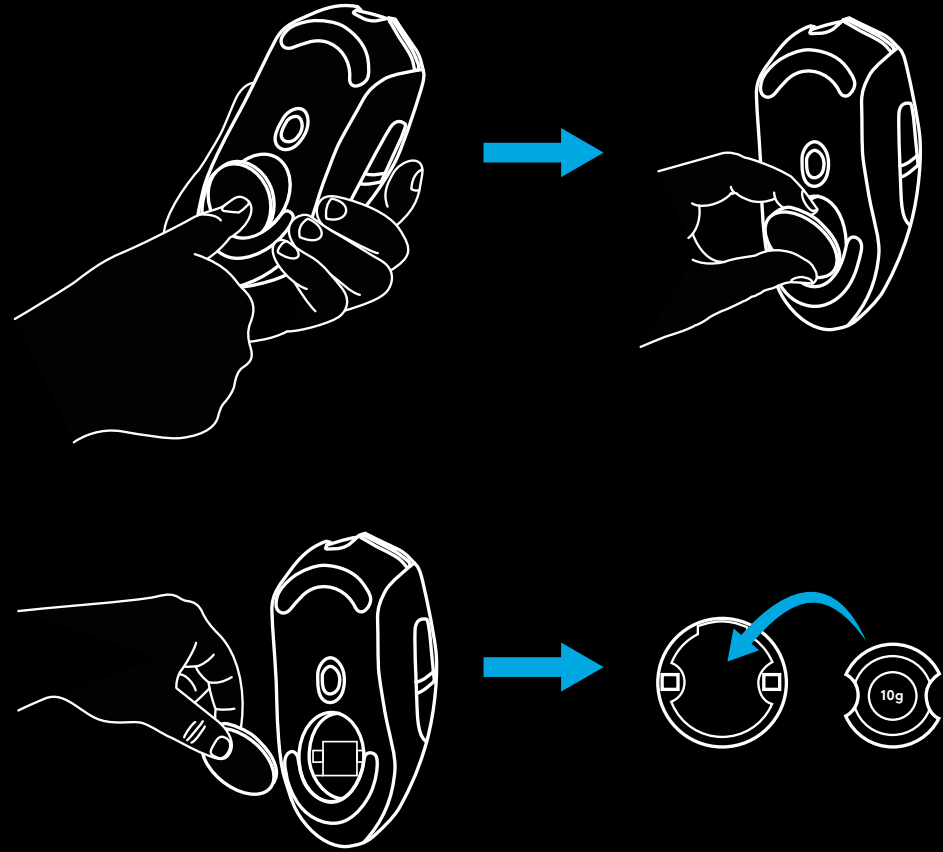
LIGHTSYNC RVB

LIGHTSYNC RVB est un éclairage intelligent et personnalisable qui réagit aux actions en jeu, au son, à la couleur de l'écran, etc. Personnalisez-le à l'aide du logiciel gaming Logitech G HUB pour correspondre à votre configuration et votre style.



PERSONNALISATION DU POIDS

Vous trouverez un poids de 10 g en option dans le coffret.



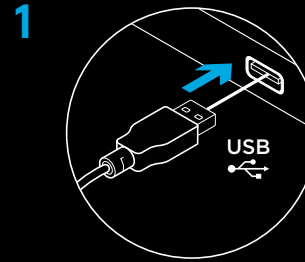
QUESTIONS FRÉQUENTES

www.logitechG.com/support/G403-HERO

INSTRUCCIONES DE INSTALACIÓN

Lee las instrucciones antes de usar el producto.

1 Conecta el mouse a un puerto USB.



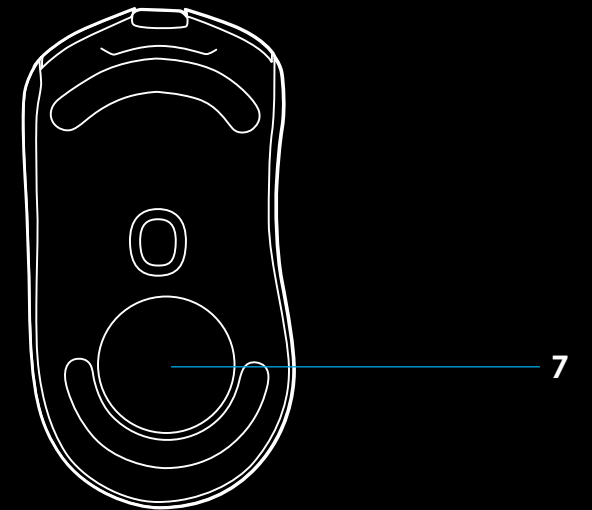
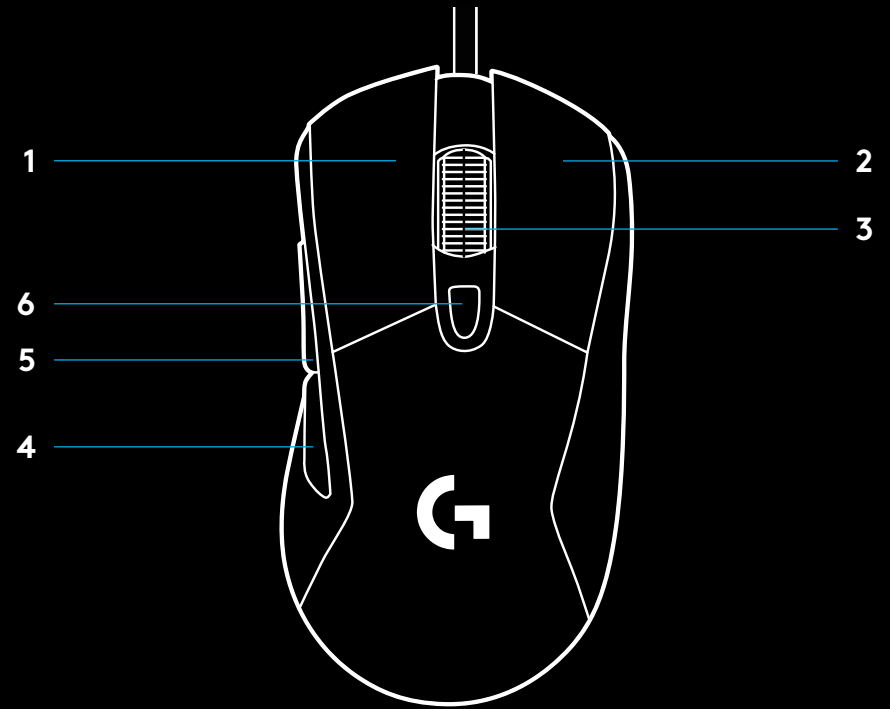
2 Descarga e instala el software Logitech G HUB desde www.logitechG.com/GHUB.



www.logitechG.com/GHUB

SEIS BOTONES TOTALMENTE PROGRAMABLES

- 1 Izquierdo (botón 1)
- 2 Derecho (botón 2)
- 3 Click con botón rueda (botón 3)
- 4 Retroceso (botón 4)
- 5 Avance (botón 5)
- 6 Ciclo de dpi
- 7 Compartimento de pesas



ILUMINACIÓN RGB PROGRAMABLE

El botón rueda y el logo de G403 HERO se iluminan con diodos LED RGB.

La iluminación se puede personalizar mediante el software Logitech G HUB para juegos con diversos modos de respiración, ciclo de colores o color continuo.

Los patrones de iluminación también se pueden sincronizar con otros dispositivos Logitech G compatibles.

RGB LIGHTSYNC

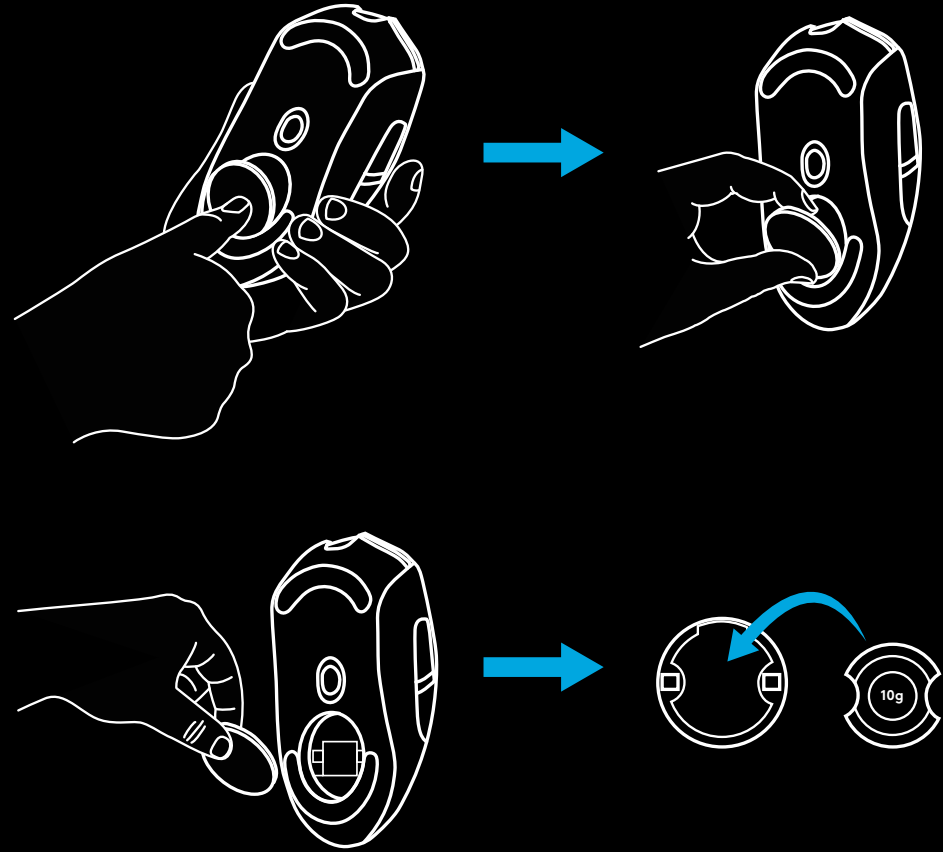
RGB LIGHTSYNC es iluminación inteligente que reacciona a la acción del juego, el audio, el color de la pantalla y más.

Usa el software Logitech G HUB para juegos para personalizar la iluminación según la configuración y tu estilo de juego.



ADAPTACIÓN DE PESO

En el paquete encontrarás una pesa de 10 g de uso opcional.



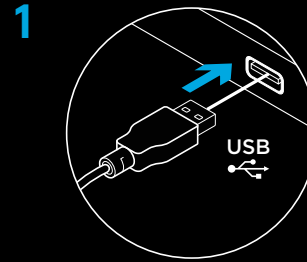
PREGUNTAS MÁS FRECUENTES

www.logitechG.com/support/G403-HERO

INSTRUÇÕES DE CONFIGURAÇÃO

Leia as instruções antes de operar o produto.

1 Conecte o mouse na porta USB.



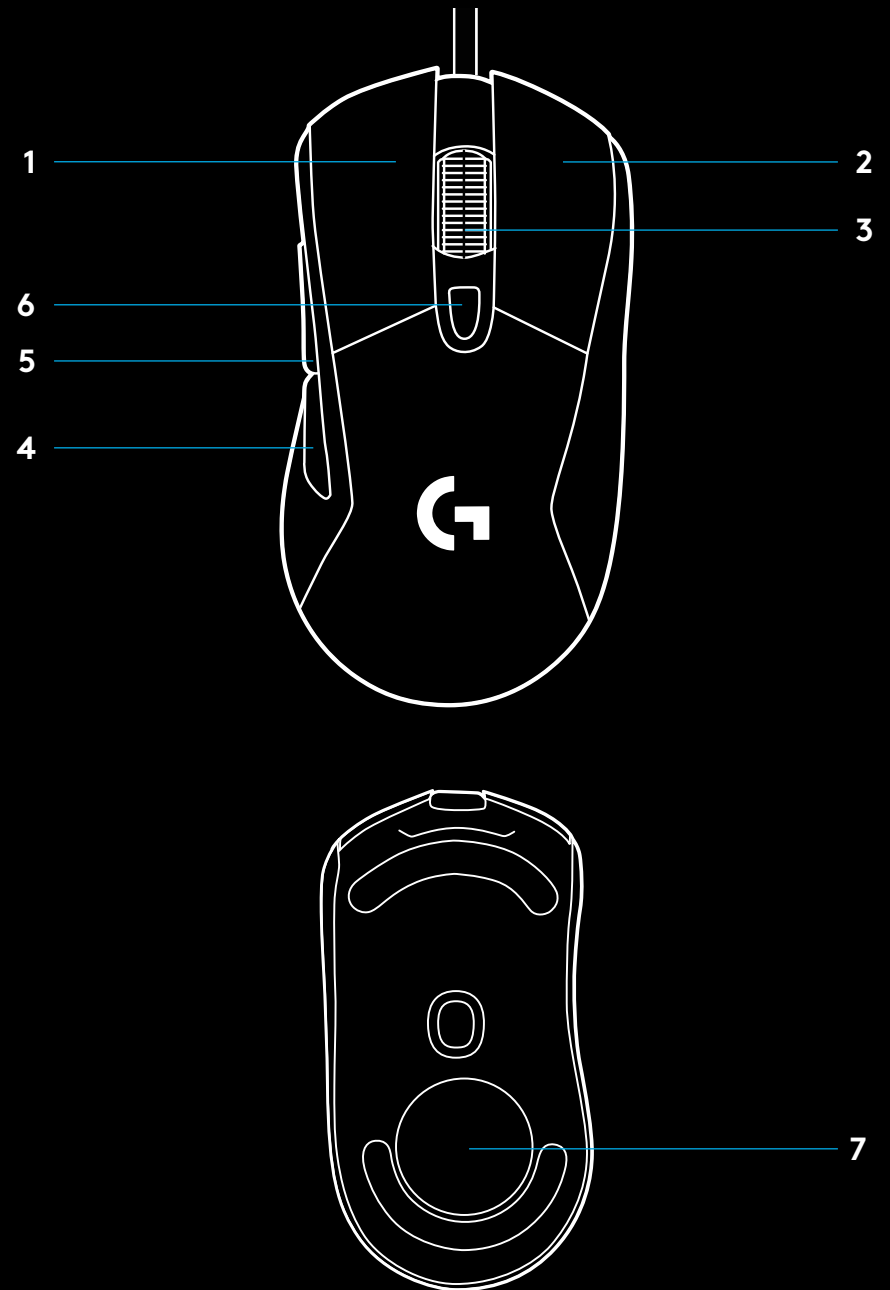
2 Faça o download e instale o software Logitech G HUB em www.logitechG.com/GHUB.



www.logitechG.com/GHUB

6 BOTÕES TOTALMENTE PROGRAMÁVEIS

- 1 Botão esquerdo (1)
- 2 Botão direito (2)
- 3 Roda de rolagem com clique (3)
- 4 Voltar (4)
- 5 Avançar (5)
- 6 Ciclo DPI
- 7 Tampa de pesos



ILUMINAÇÃO RGB PROGRAMÁVEL

A roda de rolagem e o logotipo do G403 HERO são iluminadas com LEDs RGB.

Estas cores podem ser personalizadas usando o software para jogos Logitech G HUB para uma variedade de modos de respiração, ciclo de cores ou cores sólidas.

Os padrões de iluminação também podem ser sincronizados com outros dispositivos Logitech G suportados usando este software.

LIGHTSYNC RGB

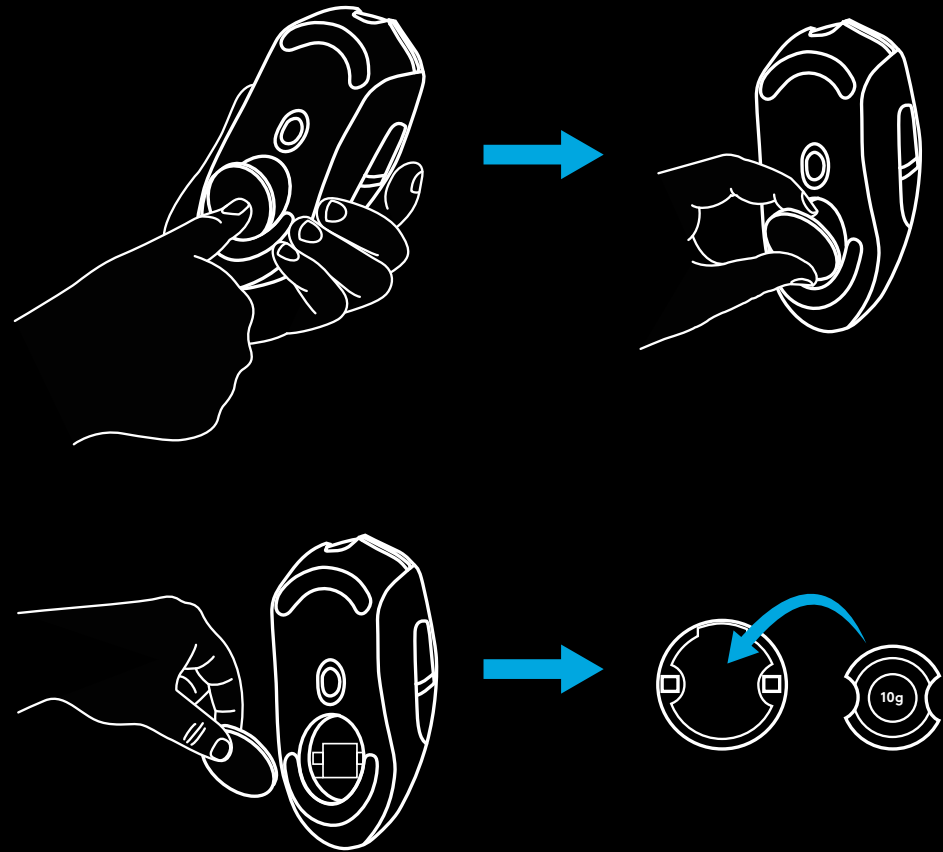
O LIGHTSYNC oferece uma iluminação RGB inteligente e focada nas ações do jogo, ao áudio, à cor da tela e muito mais.

Personalize com o software de jogos Logitech G HUB para combinar com sua configuração e estilo.



PERSONALIZAÇÃO DE PESO

Um peso opcional de 10 g pode ser encontrado na caixa.



PERGUNTAS FREQUENTES

www.logitechG.com/support/G403-HERO



© 2019 Logitech. Logi and the Logitech Logo are trademarks or registered trademarks of Logitech Europe S.A. and/or its affiliates in the U.S. and other countries. All other trademarks are the property of their respective owners. Logitech assumes no responsibility for any errors that may appear in this manual. Information contained herein is subject to change without notice.

© 2019 Logitech. Logitech, Logitech G, ainsi que les logos Logitech et Logitech G sont des marques commerciales ou déposées de Logitech Europe S.A. et/ou de ses sociétés affiliées aux États-Unis et dans d'autres pays. Toutes les autres marques sont la propriété exclusive de leurs détenteurs respectifs. Logitech décline toute responsabilité en cas d'erreurs dans ce manuel. Les informations énoncées dans le présent document peuvent faire l'objet de modifications sans avis préalable.

WEB-621-001365.003

Ovaj dokument je originalno proizveden i objavljen od strane proizvođača, brenda Logitech, i preuzet je sa njihove zvanične stranice. S obzirom na ovu činjenicu, Tehnoteka ističe da ne preuzima odgovornost za tačnost, celovitost ili pouzdanost informacija, podataka, mišljenja, saveta ili izjava sadržanih u ovom dokumentu.

Napominjemo da Tehnoteka nema ovlašćenje da izvrši bilo kakve izmene ili dopune na ovom dokumentu, stoga nismo odgovorni za eventualne greške, propuste ili netačnosti koje se mogu naći unutar njega. Tehnoteka ne odgovara za štetu nanесenu korisnicima pri upotrebi netačnih podataka. Ukoliko imate dodatna pitanja o proizvodu, ljubazno vas molimo da kontaktirate direktno proizvođača kako biste dobili sve detaljne informacije.

Za najnovije informacije o ceni, dostupnim akcijama i tehničkim karakteristikama proizvoda koji se pominje u ovom dokumentu, molimo posetite našu stranicu klikom na sledeći link:

<https://tehnoteka.rs/p/logitech-mis-g403-hero-akcija-cena/>