

Uputstvo za upotrebu (EN)

LEVOIT prečišćivač vazduha LV-H131S-RXW

levoit



Tehnoteka je online destinacija za upoređivanje cena i karakteristika bele tehnike, potrošačke elektronike i IT uređaja kod trgovinskih lanaca i internet prodavnica u Srbiji. Naša stranica vam omogućava da istražite najnovije informacije, detaljne karakteristike i konkurentne cene proizvoda.

Posetite nas i uživajte u ekskluzivnom iskustvu pametne kupovine klikom na link:

<https://tehnoteka.rs/p/levoit-preciscivac-vazduha-lv-h131s-rxw-akcija-cena/>

levoit®

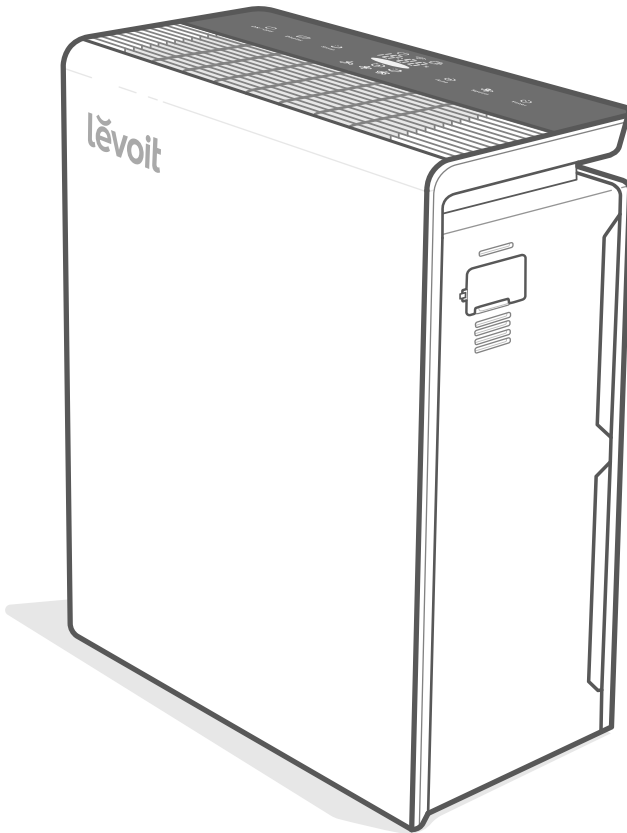
Powered by



USER MANUAL

Smart True HEPA Air Purifier

Models: LV-PUR131S, LV-RH131S, LV-H131S-RXW



Questions or Concerns?

Please contact us Mon–Fri, 9:00 am–5:00 pm PST/PDT
at support@levoit.com or at **(888) 726-8520**.

Table of Contents

Package Contents	2
Specifications	2
Safety Information	3
Getting to Know Your Air Purifier	5
Controls	6
Getting Started	7
VeSync App Setup	8
Using Your Smart Air Purifier	9
About the Filters	10
Care & Maintenance	11
Troubleshooting	14
VeSync App Troubleshooting	16
Warranty Information	18
Customer Support	19

Package Contents

- 1 × Smart Air Purifier
- 1 × High-Efficiency Activated Carbon Filters (Pre-Installed)
- 1 × Fine Preliminary/True HEPA Combination Filters (Pre-Installed)
- 1 × Quick Start Guide
- 1 × User Manual

Specifications

Power Supply	AC 120V, 60Hz
Rated Power	40W
Ideal Room Size	360 ft ² / 33 m ² Note: <ul style="list-style-type: none">• Effective for larger rooms, but purification will take longer.• Ideal Room Size is based on 3 air changes per hour (ACH).
Operating Conditions	14°–104°F / -10°–40°C
Noise Level	27–52dB
Clean Air Delivery Rate (CADR)	135 CFM / 230 m ³ /h
Dimensions	14.6 × 7.2 × 18.5 in / 37.1 × 18.3 × 47 cm
Weight	11.49 lb / 5.21 kg

To get the most out of your smart air purifier and access smart functions, download the free VeSync app.

Scan the QR code or search “VeSync” in the Apple App Store® or Google Play Store.



For app setup instructions, see page 8.

READ AND SAVE THESE INSTRUCTIONS

SAFETY INFORMATION

To reduce the risk of fire, electric shock, or other injury, follow all instructions and safety guidelines.

General Safety

- **Only** use the air purifier as described in this manual.
- **Do not** use without removing the plastic wrap from the filters. The air purifier will not filter air, and may overheat, causing a fire hazard.
- **Do not** use the air purifier outdoors.
- Keep the air purifier away from water, and wet or damp areas. **Never** place in water or other liquids.
- Keep the air purifier away from heat sources.
- **Do not** use where combustible gases, vapors, metallic dust, aerosol (spray) products, or fumes from industrial oil are present.
- Keep 5 ft / 1.5 m away from where oxygen is being administered.
- Supervise children when they are near the air purifier.
- **Do not** place anything into any opening on the air purifier, unless directed by the manual.
- **Do not** sit on or place heavy objects on the air purifier.
- Keep the inside of the air purifier dry. To prevent moisture buildup, avoid placing in rooms with major temperature changes or underneath air conditioners.
- **Always** unplug the air purifier before servicing (such as when changing filters).
- **Do not** use the air purifier if it is damaged or not working correctly, or if the cord or plug is damaged. **Do not** try to repair it yourself. Contact **Customer Support** (see page 19).
- **WARNING:** To reduce the risk of fire or electric shock, **do not** use this air purifier with any solid-state speed controls (such as a dimmer switch).
- Not for commercial use. Household use **only**.

SAFETY INFORMATION (CONT.)

Power & Cord

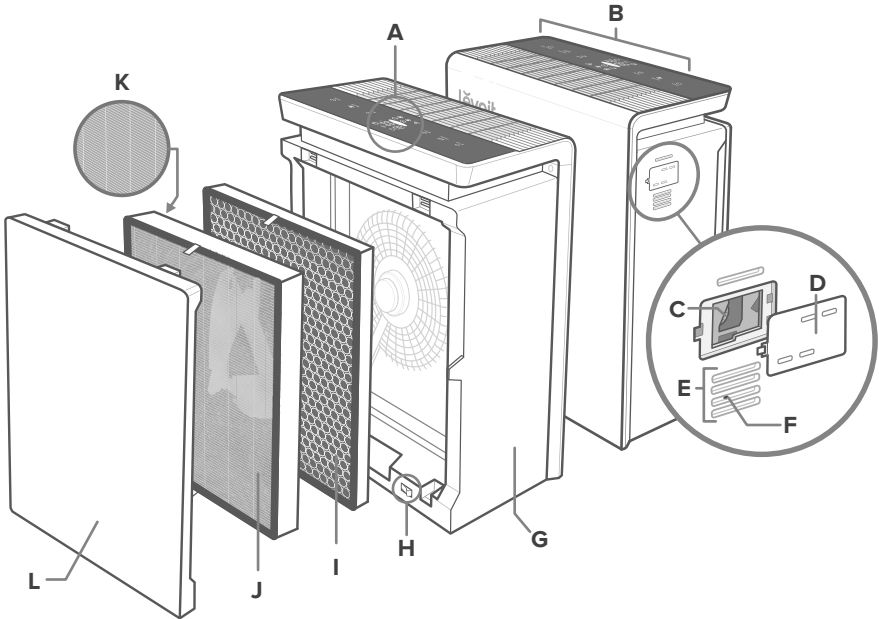
- Keep air purifier near the outlet it is plugged into.
- **Never** place the cord near any heat source.
- **Do not** cover the cord with a rug, carpet, or other covering. **Do not** place the cord under furniture or appliances.
- Keep the cord out of areas where people walk often. Place the cord where it will not be tripped over.
- This air purifier has a polarized plug (one blade is wider than the other). To reduce the risk of electric shock, this plug is intended to fit in a polarized outlet only one way. If the plug does not fit fully in the outlet, reverse the plug. If it still does not fit, contact a qualified electrician. **Do not** attempt to defeat this safety feature.
- This air purifier uses standard US 120V, 60Hz outlets. If using outside the US, check for compatibility.

Electromagnetic Fields (EMF)

Your Levoit air purifier complies with all standards regarding electromagnetic fields (EMF). If handled properly and according to the instructions in this user manual, the appliance is safe to use based on scientific evidence available today.

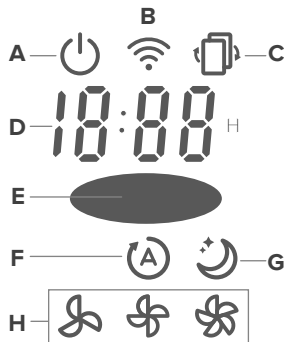
GETTING TO KNOW YOUR AIR PURIFIER

- A. LED Display
- B. Touch-Control Panel
- C. Dust Sensor Lens
- D. Dust Sensor Cover
- E. Button Vent
- F. Filter Indicator Reset Button
- G. Housing
- H. Safety Switch
- I. High-Efficiency Activated Carbon Filter
- J. Fine Preliminary Filter
- K. H13 True HEPA Filter
- L. Filter Cover



LED DISPLAY

- A. On/Off Indicator
- B. Wi-Fi Indicator
- C. Check Filter Indicator
- D. Timer Display
- E. Air Quality Indicator
- F. Auto Mode
- G. Sleep Mode
- H. Fan Speed



CONTROLS



On/Off Button

- Turns the air purifier on/off.
- Press and hold to configure the air purifier. See the VeSync in-app instructions for more information.




Wi-Fi Indicator

- Turns on, off, or blinks to indicate configuration status. See the VeSync in-app instructions for more information.



Display Off Button

- Turns the display off.
- Press any button (except ) to turn the display back on.



Sleep Mode Button

- Turns Sleep Mode on/off (see page 9).
- Press and hold for 3 seconds to reset the Check Filter Indicator.



Auto Mode Button

- Turns Auto Mode on/off (see page 9).



Fan Speed Button

- Cycles through fan speeds: Low, Medium, and High.
- The fan speed cannot be changed in Auto or Sleep Mode.



Timer Button

- Sets or cancels a timer (see page 9).



Check Filter Indicator Reset Button

- Press and hold for 3 seconds to reset the Check Filter Indicator.
- The Check Filter Indicator lights up when the filter should be checked (see page 11).

Air Quality Indicator

- Displays air quality using the automatic dust sensor inside the air purifier.
- The air purifier may take up to 1 minute to detect air quality.

Air Quality Indicator Chart	
Color	Air Quality
Red	Bad
Yellow	Moderate
Green	Good
Blue	Very Good

GETTING STARTED

1. Open the filter cover of the air purifier and remove both filters from their plastic packaging. *[Figure 1.1]*
2. Place the High-Efficiency Activated Carbon Filter back into the air purifier, followed by the Fine Preliminary/True HEPA Combination Filter. Make sure the pull tabs on both filters are facing out. *[Figure 1.2]*
3. Replace the filter cover by lining up the cover's feet with the slots in the bottom of the housing. Make sure that the triangular piece at the bottom of the cover is touching the safety switch. *[Figure 1.3]*
4. Push the cover closed.
5. Place the air purifier on a hard, flat surface. Leave 15 in / 38 cm of clearance on all sides of the air purifier. *[Figure 1.4]*

Note: Do not remove the foam piece attached to the dust sensor cover unless instructed by Customer Support. *[Figure 1.5]*

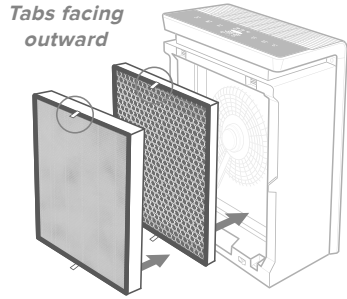


Figure 1.2

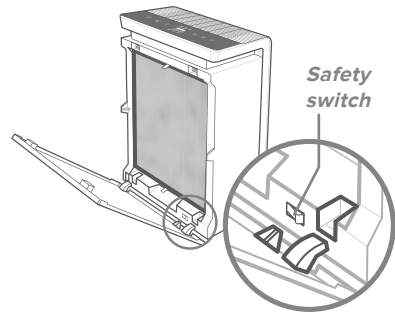


Figure 1.3

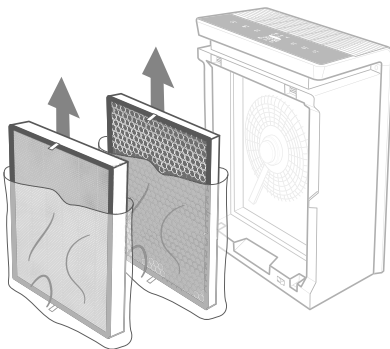


Figure 1.1

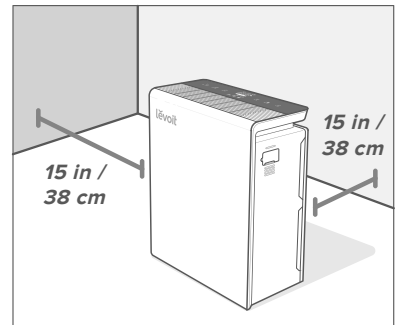


Figure 1.4

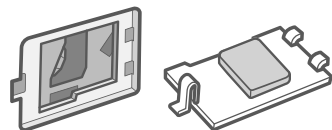


Figure 1.5

VESYNC APP SETUP

Note: Due to app updates and improvements, the VeSync app may be slightly different than shown in the manual. In case of any differences, follow the in-app instructions.



1. To download the VeSync app, scan the QR code or search “VeSync” in the Apple App Store® or Google Play™ Store. [Figure 2.1]



Figure 2.1

Note: For Android™ users, you may need to select Allow to use VeSync.

2. Open the VeSync app. If you already have an account, tap **Log In**. To create a new account, tap **Sign Up**.

Note: You must create your own VeSync account to use third-party services and products. These will not work with a guest account. With a VeSync account, you can also allow your family and friends to use your smart air purifier.

3. Tap + in the VeSync app and select your smart air purifier.
4. Follow the in-app instructions to finish setting up your air purifier.

Note: You can change the name and icon at any time in the smart air purifier settings.

Connect to Amazon Alexa or Google Assistant™

You can use the VeSync app to connect your smart air purifier to **Amazon Alexa** or **Google Assistant™**. Please follow the in-app instructions to set up your voice assistant.

Note: You must create your own VeSync account to access voice assistants.

VESYNC APP FUNCTIONS

The VeSync app allows you to access additional smart air purifier functions, including those listed below. As the app develops, more features may become available.

Remote Control

- Change any air purifier settings through the app.

Schedules

- Create and customize schedules for your air purifier to match your routines.

Timer Function

- Set a timer between 1–24 hours.
- Easily view the exact time remaining on a timer.

Filter Replacement Info

- Keep tabs on the remaining filter life by checking the filter life percentage in the app.
- Shop for replacement filters.



Third-Party Voice Control

- Compatible with Amazon Alexa and Google Assistant™ for voice commands.

USING YOUR SMART AIR PURIFIER

Note: Using the VeSync app allows you to control your air purifier remotely and access additional functions and features.

General Operation


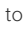

1. Plug in and press  to turn the air purifier on/off. The fan will start on low speed.
2. Optionally, press  to increase fan speed. You can also select Auto or Sleep Mode, or set a timer.

Note:

- For best results, or to address a specific air quality issue such as smoke, run the air purifier at high speed for 15–20 minutes before using a lower speed.
- To effectively clean air, keep windows closed while the air purifier is operating.

Sleep Mode

Sleep Mode uses the lowest possible fan speed to maintain a quiet environment.

- Press  to turn Sleep Mode on/off.
- Pressing  or  will also exit Sleep Mode.

Memory Function




When the air purifier is plugged in, it will remember its programmed settings while turned off and resume those settings when turned back on.

Automatic Shutoff

As a safety feature, the air purifier will automatically turn off if the filter cover is removed.

Auto Mode




Auto Mode uses the dust sensor inside the air purifier to adjust the fan speed automatically based on air quality. For example, if the air quality is bad, the fan will automatically be set to high speed.

- Press  to turn Auto Mode on/off.
- Pressing  or  will also exit Auto Mode.

Auto Mode Chart		
Color	Air Quality	Fan Speed
Red	Bad	High
Yellow	Moderate	Medium
Green	Good	Low
Blue	Very Good	Sleep Mode

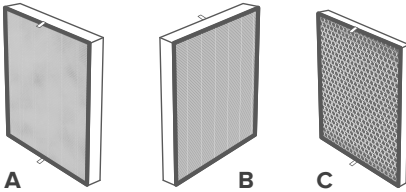
Timer

You can set a timer between 1–12 hours.

- Press  repeatedly to choose a time in increments of 1 hour. When you stop pressing , the display will flash 3 times and the timer will start.
- The air purifier will automatically turn off once the timer is finished.
- To cancel a timer, press  repeatedly until the display reads “-:-” and flashes 3 times.

ABOUT THE FILTERS

This air purifier uses a 3-stage filtration system to purify air.



A. Fine Preliminary Filter

- Captures large particles such as dust, lint, fibers, hair, and pet fur.
- Maximizes the life of the True HEPA Filter by protecting it.

B. H13 True HEPA Filter

- Removes at least 99.97% of airborne particles 0.3 micrometers (μm) in diameter.
- Traps small particles such as fine dust, smoke particles, and allergens such as pollen and pet dander.

C. High-Efficiency Activated Carbon Filter

- Physically adsorbs smoke, odors, and fumes.
- Filters compounds such as formaldehyde, benzene, ammonia, hydrogen sulfide, and volatile organic compounds (VOCs).

Note: *Levoit air purifiers filter airborne particles 0.3 microns in size. Aroavast Corporation makes no claims that this air purifier helps reduce the COVID-19 virus.*

Essential Oils

Do not add essential oils to the air purifier or filter. The filters will become damaged by the oil and will eventually release an unpleasant smell.

Do not use oil diffusers near the air purifier.

Clean Air Delivery Rate

This air purifier has a Clean Air Delivery Rate of 135 cubic feet per minute (CFM), or 230 m^3/h .

Clean Air Delivery Rate (CADR) measures the efficiency of an air purifier by indicating the volume of clean air that an air purifier produces per minute. This is based on removal of dust, pollen, and smoke, which are the 3 most common indoor air pollutants. The higher the CADR, the more particles the air purifier will remove and the larger the area it can clean. The rating is measured at the air purifier's highest speed.

Air Change Per Hour

The air change rate is how many times all of the air in a room can be purified (or "changed") by the air purifier in 1 hour. Air changes per hour are calculated on the recommended room size assuming 8 ft / 2.4 m ceilings. For smaller rooms, the air change per hour will increase. This air purifier has an air change per hour of 3, which means it can change air 3 times at the max speed in a single, closed room up to 360 ft^2 / 33 m^2 in size. The air purifier is effective for larger rooms, but air purification will take longer, with fewer air changes per hour.

Note: *To effectively clean air, keep windows and doors closed while the air purifier is on.*

Humidity

Moisture may damage the filters. This air purifier should be used in an area with a humidity level below 85% RH. If you use the air purifier in excessively humid areas, the surface of the filters will become moldy.

Note: *Water or moisture will allow mold to grow. To solve a mold problem, get rid of the source of the moisture and clean up the mold.*

CARE & MAINTENANCE

Cleaning the Air Purifier

- Unplug before cleaning.
- Wipe the outside of the air purifier with a soft, dry cloth. If necessary, wipe the housing with a damp cloth, then immediately dry.
- Vacuum the inside of the air purifier.
- **Do not** clean with water or any other liquid, to avoid risk of electric shock.
- **Do not** clean with abrasive chemicals or flammable cleaning agents.

Check Filter Indicator

The Check Filter Indicator will light up as a reminder to check the filters. Depending on how often you use the air purifier, the indicator should turn on at about 6–8 months. You may not need to change your filters yet, but you should check them when the indicator light turns on.

When your air purifier is set up with the VeSync app, you can also check the app to see your remaining filter life. You will also receive a notification from VeSync when it's time to check your filter.

The VeSync app uses a scientific algorithm to determine your filter life based on air quality, amount of use, and other factors. This will provide a more accurate estimate than the Check Filter Indicator. The VeSync filter life percentage is based on 12 hours of daily use.

Reset the Check Filter Indicator by pressing the black Filter Indicator Reset Button in the vent on the side of the air purifier (see page 13).

Replacing the Filters

1. Unplug the air purifier, then remove the filter cover (see Getting Started, page 7).
2. Remove the old filters.

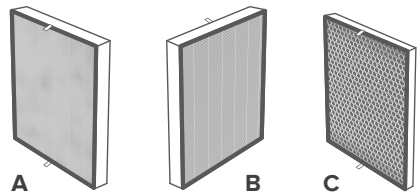
3. Clean out any remaining dust or hair inside the air purifier using a vacuum hose. Do not use water or liquids to clean the air purifier.
4. Unwrap the new filters. Place the High-Efficiency Activated Carbon Filter inside the housing. Make sure the pull tabs are facing out.
5. Install the Fine Preliminary/True HEPA Combination Filter into the housing. Make sure the pull tabs are facing out.
6. Replace the filter cover. The air purifier will not turn on unless the filter cover is replaced correctly.
7. Reset the Check Filter Indicator (see page 13).

Cleaning the Filters

- A. The Fine Preliminary Filter should be cleaned once a month to increase efficiency and extend the life of your filter. Clean the Fine Preliminary Filter using a brush or vacuum hose to remove hair, dust, and large particles.

Note: Make sure you're cleaning the correct side of the Combination Filter. **Only** clean the side of the filter covered with the Fine Preliminary Filter.

- B. **Do not** clean the True HEPA Filter. Fine dust may be released back into the air if cleaning is attempted. Only clean the Fine Preliminary Filter.
- C. The High-Efficiency Activated Carbon Filter does not require cleaning.



CARE & MAINTENANCE (CONT.)

When Should I Replace the Filters?

Check the VeSync app to see your remaining filter life. If the app shows that the filter life is less than 5%, the filters should be replaced.

The filters should be replaced every 6–8 months. You may need to replace your filters earlier or later depending on how often you use your air purifier. Using your air purifier in an environment with relatively high pollution may mean you will need to change the filters more often.

You may need to replace your filters if you notice:

- Increased noise when the air purifier is on
- Decreased airflow
- Unusual odors
- Visibly clogged filters

Note: To maintain the performance of your air purifier, **only** use official Levoit filters. To buy replacement filters, visit Levoit's online store. Go to levoit.com for more information.

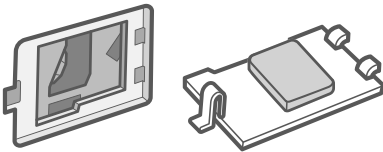


Figure 2.3

Cleaning the Dust Sensor Lens

1. Unplug the air purifier.
2. Open the dust sensor cover. [Figure 2.1]
3. Use a cotton swab dipped in water to clean the dust sensor lens. [Figure 2.2]
4. Wipe the lens dry with a dry cotton swab.

Note: Do not remove the foam piece attached to the dust sensor cover unless instructed by Customer Support. [Figure 2.3]

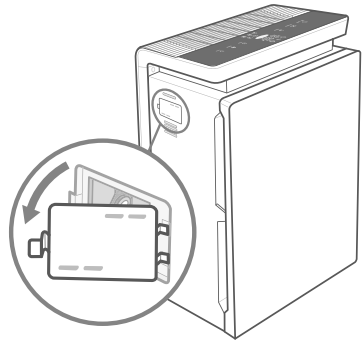


Figure 2.1

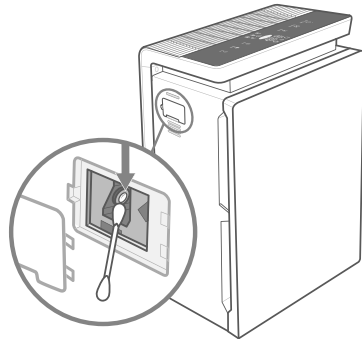


Figure 2.2

CARE & MAINTENANCE (CONT.)

Resetting the Check Filter Indicator

Reset the Check Filter Indicator after changing the filters.

1. Plug in the air purifier and turn it on.
2. Locate the button vent on the side of the air purifier. *[Figure 3.1]*
3. Use a paperclip, small flathead screwdriver, or other small object to press the black Filter Indicator Reset Button in the vent. *[Figure 3.1]*
4. The Check Filter Indicator will turn off, indicating that the reset is complete.

Storage

If not using the air purifier for an extended period of time, wrap the filters in plastic packaging and store in a dry place to avoid moisture damage.

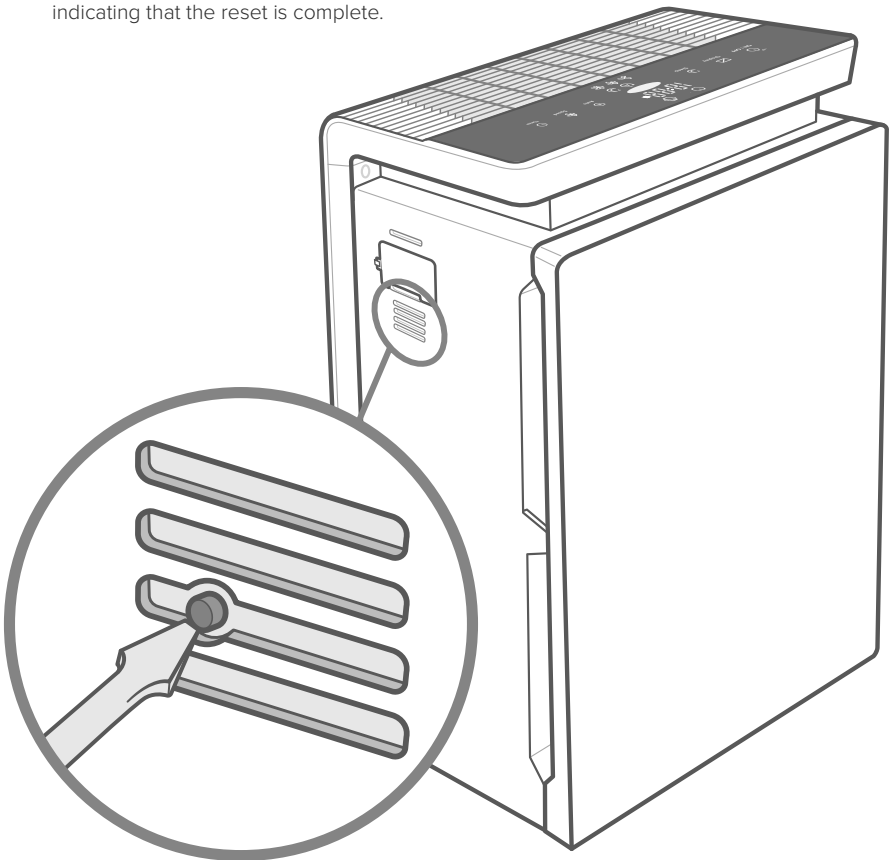




Figure 3.1

TROUBLESHOOTING

Problem	Possible Solution
Air purifier will not turn on or respond to button controls.	Plug in the air purifier.
	Check to see if the power cord is damaged. If it is, stop using the air purifier and contact Customer Support (see page 19).
	Securely close the filter cover so that the safety switch is activated (see page 7).
	Plug the air purifier into a different outlet.
Air purifier makes an unusual noise when the fan is on.	The air purifier may be malfunctioning. Contact Customer Support (see page 19).
	Make sure the filters are removed from their packaging and properly in place (see page 7).
	Replace the filters (see page 11).
	Air purifier may be damaged, or a foreign object may be inside. Stop using the air purifier and contact Customer Support (see page 19). Do not try to repair the air purifier.
Airflow is significantly reduced.	Make sure the air purifier is operating on a hard, flat, level surface.
	Make sure the filters are properly in place with plastic packaging removed (see page 7).
	Press  to increase the fan speed.
	Leave 15 in / 38 cm of clearance on all sides of the air purifier.
	The pre-filter may be clogged by large particles, such as hair or lint, blocking airflow. Clean the pre-filter (see page 11).
Replace the filters (see page 11).	
Check Filter Indicator is still on after replacing the filters.	Reset the Check Filter Indicator (see page 13).

TROUBLESHOOTING (CONT.)

Problem	Possible Solution
<p>Poor air purification quality.</p>	<p>Press  to increase the fan speed.</p>
	<p>Make sure no objects are blocking the top or sides of the air purifier (the inlet or outlet).</p>
	<p>Make sure the filters are removed from their packaging and properly in place (see page 7).</p>
	<p>Close doors and windows while running the air purifier.</p>
	<p>If the room is larger than 360 ft² / 33m², air purification will take longer. The air purifier may not be as effective in significantly larger rooms.</p>
	<p>Clean the dust sensor lens (see page 12).</p>
	<p>Replace the filters (see page 11).</p>
<p>Check Filter Indicator has not turned on within 8 months.</p>	<p>The Check Filter Indicator is a reminder for you to check the filters and will light up based on how much the air purifier has been used (see page 11). If you don't use your air purifier often, the indicator will take longer to turn on.</p>
<p>Check Filter Indicator turned on before 6 months.</p>	<p>The Check Filter Indicator is a reminder for you to check the filters and will light up based on how much the air purifier has been used (see page 11). If you run your air purifier frequently, the indicator will turn on sooner.</p>
<p>Air Quality Indicator always stays red.</p>	<p>Clean the dust sensor lens (see page 12).</p>
	<p>If you're using an ultrasonic humidifier near the air purifier, the mist may affect the accuracy of the dust sensor. The sensor will detect the large mist particles, and the Air Quality Indicator may turn red. Avoid using an ultrasonic humidifier near the air purifier, or avoid using Auto Mode.</p>
<p>Air Quality Indicator always stays blue, even when the air quality is poor.</p>	<p>Clean the dust sensor lens (see page 12).</p>
	<p>The dust sensor detects airborne particles, but it cannot detect gas. Make sure there isn't gas polluting the air.</p>
<p>Air purifier randomly turns off.</p>	<p>Air purifier is malfunctioning. Stop using the air purifier and contact Customer Support (see page 19).</p>

If your problem is not listed, please contact Customer Support (see page 19).

VESYNC APP TROUBLESHOOTING

My smart air purifier isn't connecting to the VeSync app.

- During the setup process, you must be on a secure 2.4GHz Wi-Fi network. Confirm that the network is working correctly.
- Make sure the Wi-Fi password you entered is correct.
 - There should be no spaces at the beginning or end of the password.
 - Test the password by connecting a different electronic device to the router.
 - If you're manually typing in the SSID and password, double check that both are entered correctly.
- Try moving your air purifier closer to the router. Your phone should be as close as possible to your air purifier.
- Your router may need to be at a higher location, away from obstructions.
- Make sure your air purifier and router are away from appliances (such as microwave ovens, refrigerators, electronic devices, etc.) to avoid signal interference.
- If you're using a VPN, make sure it's turned off while setting up your air purifier.
- Disable portal authentication for your Wi-Fi network. If portal authentication is enabled, the air purifier will not be able to access your Wi-Fi network, and setup will fail.

Note: *Portal authentication means that you need to sign in to your Wi-Fi network through a web page before you can use the Internet.*

My air purifier is offline.

- Make sure the air purifier is plugged in and has power, then refresh the VeSync menu by swiping down on the screen.
- Make sure your router is connected to the internet and your phone's network connection is working.
- Delete the offline air purifier from the VeSync app. Swipe left (iOS®) or press and hold (Android™), then tap **Delete**. Reconfigure the air purifier with the VeSync app.

Note: *Power outages, internet outages, or changing Wi-Fi routers may cause the air purifier to go offline.*

If your problem is not listed, please contact **Customer Support** (see page 19).

FCC STATEMENT

This device complies with Part 15 of the FCC Rules. Operation is subject to the following two conditions:

1. This device may not cause harmful interference, and
2. This device must accept any interference received, including interference that may cause undesired operation.

FEDERAL COMMUNICATION COMMISSION INTERFERENCE STATEMENT

NOTE: This equipment has been tested and found to comply with the limits for a Class B digital device, pursuant to Part 15 of the FCC Rules. These limits are designed to provide reasonable protection against harmful interference in a residential installation. This equipment generates, uses and can radiate radio frequency energy and, if not installed and used in accordance with the instructions, may cause harmful interference to radio communications. However, there is no guarantee that interference will not occur in a particular installation. If this equipment does cause harmful interference to radio or television reception, which can be determined by turning the equipment off and on, the user is encouraged to try to correct the interference by one or more of the following measures:

- Reorient or relocate the receiving antenna.
- Increase the separation between the equipment and receiver.
- Connect the equipment into an outlet on a circuit different from that to which the receiver is connected.
- Consult the dealer or an experienced radio/TV technician for help.

FCC Caution: Any changes or modifications not expressly approved by the party responsible for compliance could void the user's authority to operate this equipment.

FCC RADIATION EXPOSURE STATEMENT

This equipment complies with FCC radiation exposure limits set forth for an uncontrolled environment. End users must follow the specific operating instructions for satisfying RF exposure compliance. To maintain compliance with FCC RF exposure compliance requirements, please follow operation instructions as documented in this manual. This transmitter must not be co-located or operating in conjunction with any other antenna or transmitter. This equipment should be installed and operated with a minimum distance of 20 cm between the radiator and your body. The availability of some specific channels and/or operational frequency bands are country dependent and are firmware programmed at the factory to match the intended destination. The firmware setting is not accessible by the end user.

WARRANTY INFORMATION

Product Name	Smart True HEPA Air Purifier
Models	LV-PUR131S, LV-RH131S, LV-H131S-RXW
<i>For your own reference, we strongly recommend that you record your order ID and date of purchase.</i>	
Order ID	
Date of Purchase	

Terms & Policy

Arovast Corporation (“Arovast”) warrants this product to the original purchaser to be free from defects in material and workmanship, under normal use and conditions, for a period of 1 year from the date of original purchase.

Arovast agrees, at our option during the warranty period, to repair any defect in material or workmanship or furnish an equal product in exchange without charge, subject to verification of the defect or malfunction and proof of the date of purchase.

There is no other express warranty. This warranty does not apply:

- If the product has been modified from its original condition;
- If the product has not been used in accordance with directions and instructions in the user manual;
- To damages or defects caused by accident, abuse, misuse or improper or inadequate maintenance;
- To damages or defects caused by service or repair of the product performed by an unauthorized service provider or by anyone other than Arovast;
- To damages or defects occurring during commercial use, rental use, or any use for which the product is not intended;
- To damages or defects exceeding the cost of the product.

Arovast will not be liable for indirect, incidental, or consequential damages in connection with the use of the product covered by this warranty.

This warranty extends only to the original consumer purchaser of the product and is not transferable to any subsequent owner of the product regardless of whether the product is transferred during the specified term of the warranty.

This warranty does not extend to products purchased from unauthorized sellers. Arovast’s warranty extends only to products purchased from authorized sellers that are subject to Arovast’s quality controls and have agreed to follow its quality controls.

All implied warranties are limited to the period of this limited warranty.

This warranty gives you specific legal rights and you may also have other rights which vary from state to state. Some states do not allow the exclusion or limitation of incidental or consequential damages, so the above limitation or exclusion may not apply to you.

If you discover that your product is defective within the specified warranty period, please contact Customer Support via support@levoit.com. **DO NOT** dispose of your product before contacting us. Once our Customer Support Team has approved your request, please return the product with a copy of the invoice and order ID.

Extend Your Warranty by 1 Year

Register your product within 14 days of purchase at www.levoit.com/warranty to extend your 1-year warranty by an additional year.

This warranty is made by:

Arovast Corporation
1202 N. Miller St., Suite A
Anaheim, CA 92806

CUSTOMER SUPPORT

If you have any questions or concerns about your new product, please contact our helpful Customer Support Team.

Arovast Corporation

1202 N. Miller St., Suite A
Anaheim, CA 92806

Email: support@levoit.com

Toll-Free: (888) 726-8520

Support Hours

Mon–Fri, 9:00 am–5:00 pm PST/PDT

*Please have your order invoice and order ID ready before contacting Customer Support.

ATTRIBUTIONS

Amazon, Alexa, and all related logos are trademarks of Amazon.com, Inc. or its affiliates.

Google and Google Play are trademarks of Google LLC.

Apple App Store is a trademark of Apple Inc.

Wi-Fi® is a registered trademark of Wi-Fi Alliance®.

iOS is a registered trademark of Cisco Systems, Inc. and/or its affiliates in the United States and certain other countries.



The energy efficiency of this ENERGY STAR certified model is measured based on a ratio between the model's CADR for Smoke and the electrical energy it consumes, or CADR/Watt.

lėvoit®



/LEVOITLIFESTYLE



/LEVOIT



/LEVOIT



/LEVOIT



LEVOIT.COM

Ovaj dokument je originalno proizveden i objavljen od strane proizvođača, brenda Levoit, i preuzet je sa njihove zvanične stranice. S obzirom na ovu činjenicu, Tehnoteka ističe da ne preuzima odgovornost za tačnost, celovitost ili pouzdanost informacija, podataka, mišljenja, saveta ili izjava sadržanih u ovom dokumentu.

Napominjemo da Tehnoteka nema ovlašćenje da izvrši bilo kakve izmene ili dopune na ovom dokumentu, stoga nismo odgovorni za eventualne greške, propuste ili netačnosti koje se mogu naći unutar njega. Tehnoteka ne odgovara za štetu nanесenu korisnicima pri upotrebi netačnih podataka. Ukoliko imate dodatna pitanja o proizvodu, ljubazno vas molimo da kontaktirate direktno proizvođača kako biste dobili sve detaljne informacije.

Za najnovije informacije o ceni, dostupnim akcijama i tehničkim karakteristikama proizvoda koji se pominje u ovom dokumentu, molimo posetite našu stranicu klikom na sledeći link:

<https://tehnoteka.rs/p/levoit-preciscivac-vazduha-lv-h131s-rxw-akcija-cena/>